

WAAS CH <b>56425</b> <b>W29A</b>	APP CRS <b>294°</b>	Rwy Idg TDZE Apt Elev	<b>4461</b> <b>97</b> <b>103</b>
--	------------------------	-----------------------------	--

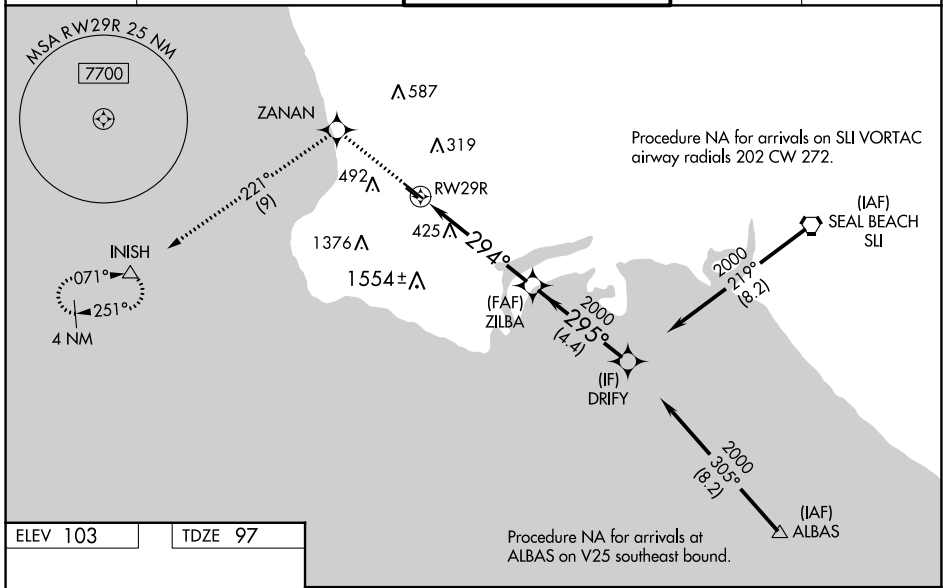
# RNAV (GPS) RWY 29R

ZAMPERINI FLD (TOA)

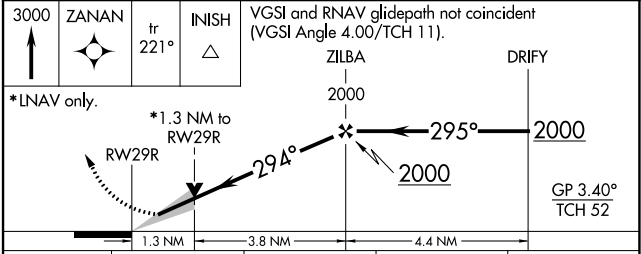
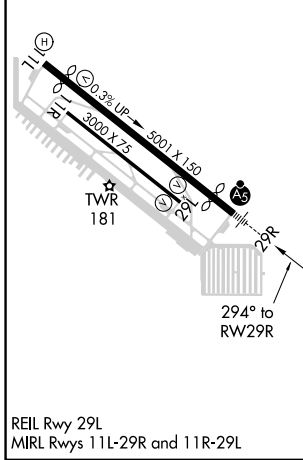
**⚠** For uncompensated Baro-VNAV systems, LNAV/VNAV NA below 3°C (38°F) or above 54°C (130°F). Circling NA southwest of Rwy 11R-29L. DME/DME RNP-0.3 NA.  
**⚠** For inop ALS, increase LPV all Cats visibility to ½ SM. For inop ALS when using Los Angeles Intl altimeter setting, increase LPV all Cats visibility to ¾ SM, LNAV/VNAV all Cats visibility to 2 SM, and LNAV Cat C visibility to 1¾ SM. Baro-VNAV and VDP NA when using Los Angeles Intl altimeter setting. When local altimeter setting not received, except for operators with approved weather reporting service, use Los Angeles Intl setting: increase LPV DA to 391 feet and LNAV/VNAV DA to 763 feet and all MDA 40 feet; increase LNAV/VNAV all Cats visibility and LNAV Cat C visibility ½ SM.

**MALSRL**  
  
**MISSED APPROACH:** (Do not exceed 185 KIAS until ZANAN) Climb to 3000 direct ZANAN and on track 221° to INISH and hold, continue climb-in-hold to 3000.

ATIS <b>125.6</b>	SOCAL APP CON <b>124.3 363.2</b> (Rwys 11L, 11R) <b>127.2 269.6</b> (Rwys 29L, 29R)	TORRANCE TOWER* <b>133.075 257.8</b> (NORTH) <b>124.0</b> (CTAF) <b>0 257.8</b> (SOUTH)	GND CON <b>120.9</b>	UNICOM <b>122.95</b>
----------------------	---	---	-------------------------	-------------------------



ELEV 103	TDZE 97
----------	---------



	A	B	C	D
LPV DA	367-½ 270 (300-½)			NA
LNAV/VNAV DA	739-1½ 642 (700-1½)			NA
LNAV MDA	680-½	583 (600-½)	680-1¼ 583 (600-1¼)	NA
<b>C</b> CIRCLING	680-1	577 (600-1)	680-1¾ 577 (600-1¾)	NA

SW-3, 28 NOV 2024 to 26 DEC 2024

SW-3, 28 NOV 2024 to 26 DEC 2024