

22027

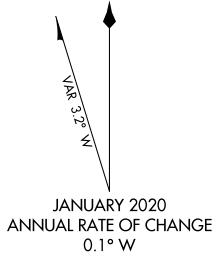
AIRPORT DIAGRAM

AL-5180 (FAA)

COLES COUNTY MEML (MTO)
MATTOON/CHARLESTON, ILLINOIS

ASOS
118.475
CTAF/UNICOM
122.7
D

FIELD
ELEV
722



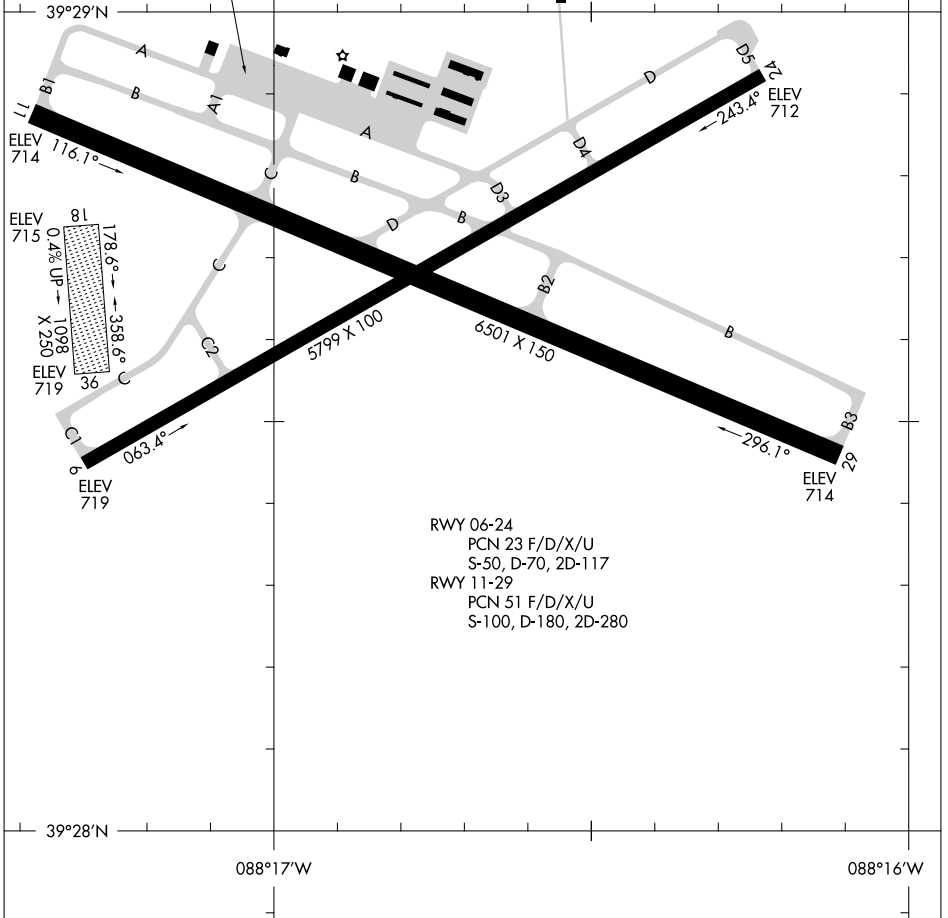
A 780

APRON

FIRE STATION

EC-3, 28 NOV 2024 to 26 DEC 2024

EC-3, 28 NOV 2024 to 26 DEC 2024



RWY 06-24
PCN 23 F/D/X/U
S-50, D-70, 2D-117

RWY 11-29
PCN 51 F/D/X/U
S-100, D-180, 2D-280