

LAUREL, MISSISSIPPI

AL-5185 (FAA)

24305

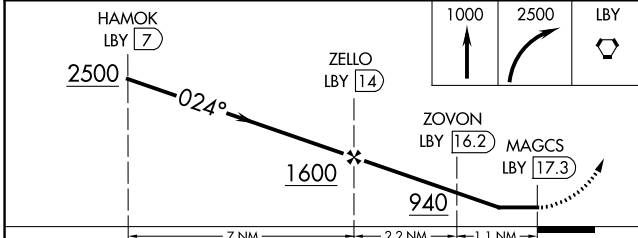
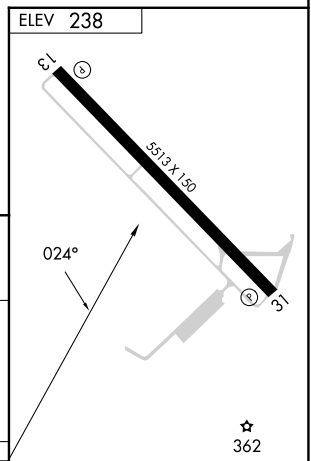
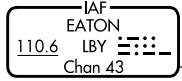
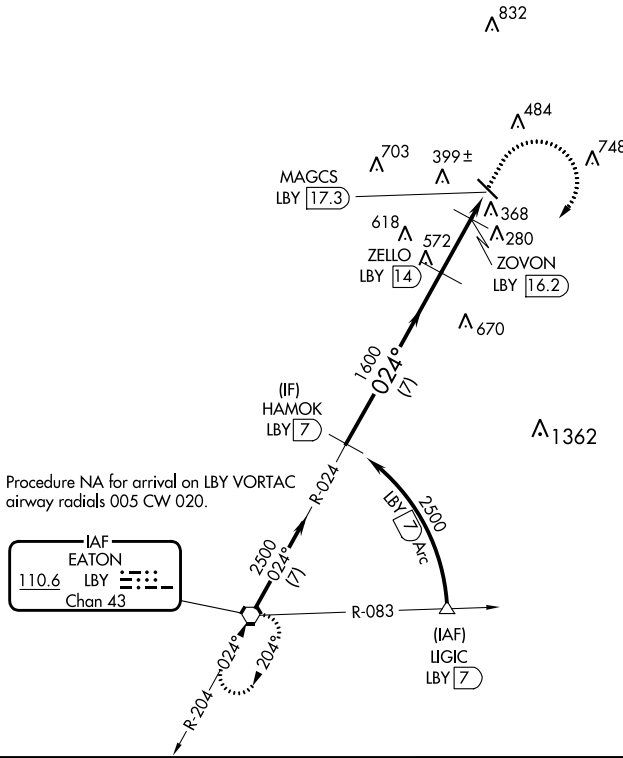
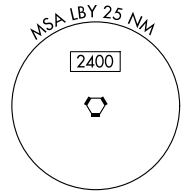
VORTAC LBV <b>110.6</b> Chan <b>43</b>	APP CRS <b>024°</b>	Rwy Idg TDZE Apt Elev	<b>N/A</b> <b>N/A</b> <b>238</b>
--	------------------------	-----------------------------	--

VOR-A

HESLER/NOBLE FLD (LUL)

DME required.	MISSED APPROACH: Climb to 1000, then climbing right turn to 2500 direct LBV VORTAC and hold.
---------------	--

AWOS-3PT <b>119.275</b>	HOUSTON CENTER <b>126.8 327.8</b>	UNICOM <b>123.05 (CTAF)</b>
----------------------------	--------------------------------------	--------------------------------



CATEGORY	A	B	C	D
CIRCLING	700-1 462 (500-1)	800-1 562 (600-1)	1040-2 <sup>3</sup> / <sub>4</sub> 802 (900-2 <sup>1</sup> / <sub>4</sub> )	1060-2 <sup>3</sup> / <sub>4</sub> 822 (900-2 <sup>3</sup> / <sub>4</sub> )

REIL Rwy 13-31  
HIRL Rwy 13-31

SC-4, 28 NOV 2024 to 26 DEC 2024

SC-4, 28 NOV 2024 to 26 DEC 2024

LAUREL, MISSISSIPPI  
Amdt 6 23APR20

31°40'N-89°10'W

HESLER/NOBLE FLD (LUL)

VOR-A