

WAAS CH <b>82512</b> <b>W05A</b>	APP CRS <b>054°</b>	Rwy Idg TDZE <b>439</b> Apt Elev <b>439</b>	<b>6051</b>
--	------------------------	---	-------------

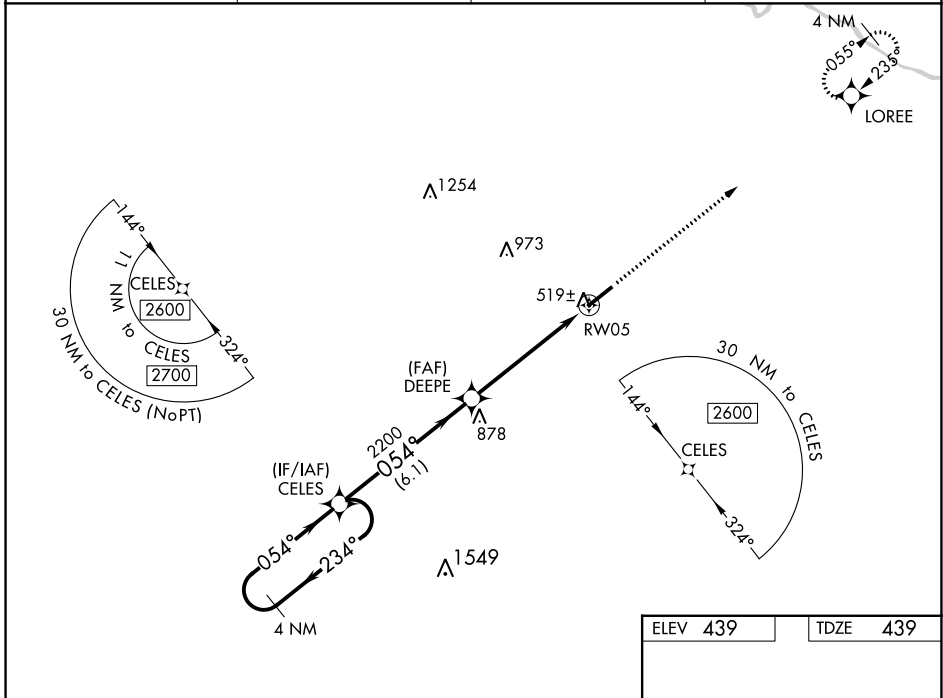
# RNAV (GPS) RWY 5

MADISONVILLE RGNL (2I0)

**▼** **▲** For uncompensated Baro-VNAV systems, LNAV/VNAV NA below -15°C (5°F) or above 54°C (130°F). Baro-VNAV and VDP NA when using Evansville altimeter setting. Rwy 05 helicopter visibility reduction below 3/4 SM NA. DME/DME RNP-0.3 NA. When local altimeter setting not received, use Evansville altimeter setting and increase LPV DA to 788 feet, LNAV/VNAV DA to 817 feet and all visibilities 3/8 SM. Increase all MDA 100 feet and LNAV Cat C/D and Circling Cat C visibility 1/4 SM.

**MISSED APPROACH:**  
Climb to 2600 direct LOREE and hold.

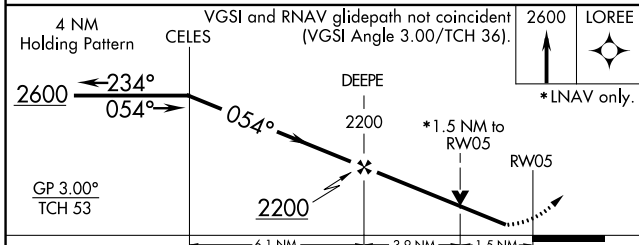
AWOS-3 <b>126.475</b>	EVANSVILLE APP CON ★ <b>124.025 290.9</b>	CLNC DEL <b>120.1</b>	UNICOM <b>122.7 (CTAF) 0</b>
--------------------------	--	--------------------------	---------------------------------



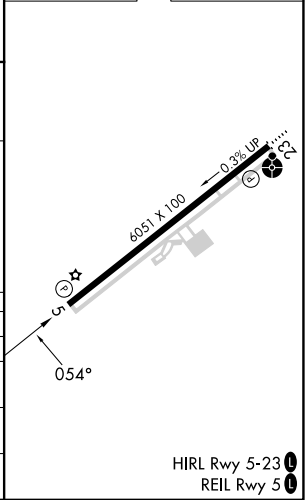
SE-1, 28 NOV 2024 to 26 DEC 2024

SE-1, 28 NOV 2024 to 26 DEC 2024

ELEV 439	TDZE 439
----------	----------



CATEGORY	A	B	C	D
LPV DA		689-3/4	250 (300-3/4)	
LNAV/VNAV DA		718-7/8	279 (300-7/8)	
LNAV MDA	960-1	521 (600-1)	960-1 1/2	521 (600-1 1/2)
<b>C</b> CIRCLING	960-1	521 (600-1)	960-1 1/2 521 (600-1 1/2)	1340-3 901 (1000-3)



HIRL Rwy 5-23 0  
REIL Rwy 5 0