

DALLAS THREE DEPARTURE  
(DAL3, TTT) 25JAN24

ARLINGTON MUNI (GKY)  
ARLINGTON, TEXAS

LONE STAR DEP CON  
135.975 379.9  
CLNC DEL  
121.875  
CLNC DEL (when twr closed)  
118.85  
GND CON  
121.875  
ARLINGTON TOWER\*  
128.625 (CTAF)

RADAR and DME required.

TAKEOFF MINIMUMS  
Rwys 16, 34: Standard.

TOP ALTITUDE:  
ASSIGNED BY ATC

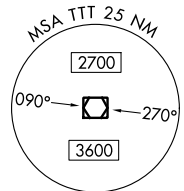
BONHAM  
114.6 BYP  
Chan 93

MAVERICK  
113.1 TTT  
Chan 78

GREGG COUNTY  
112.9 GGG  
Chan 76

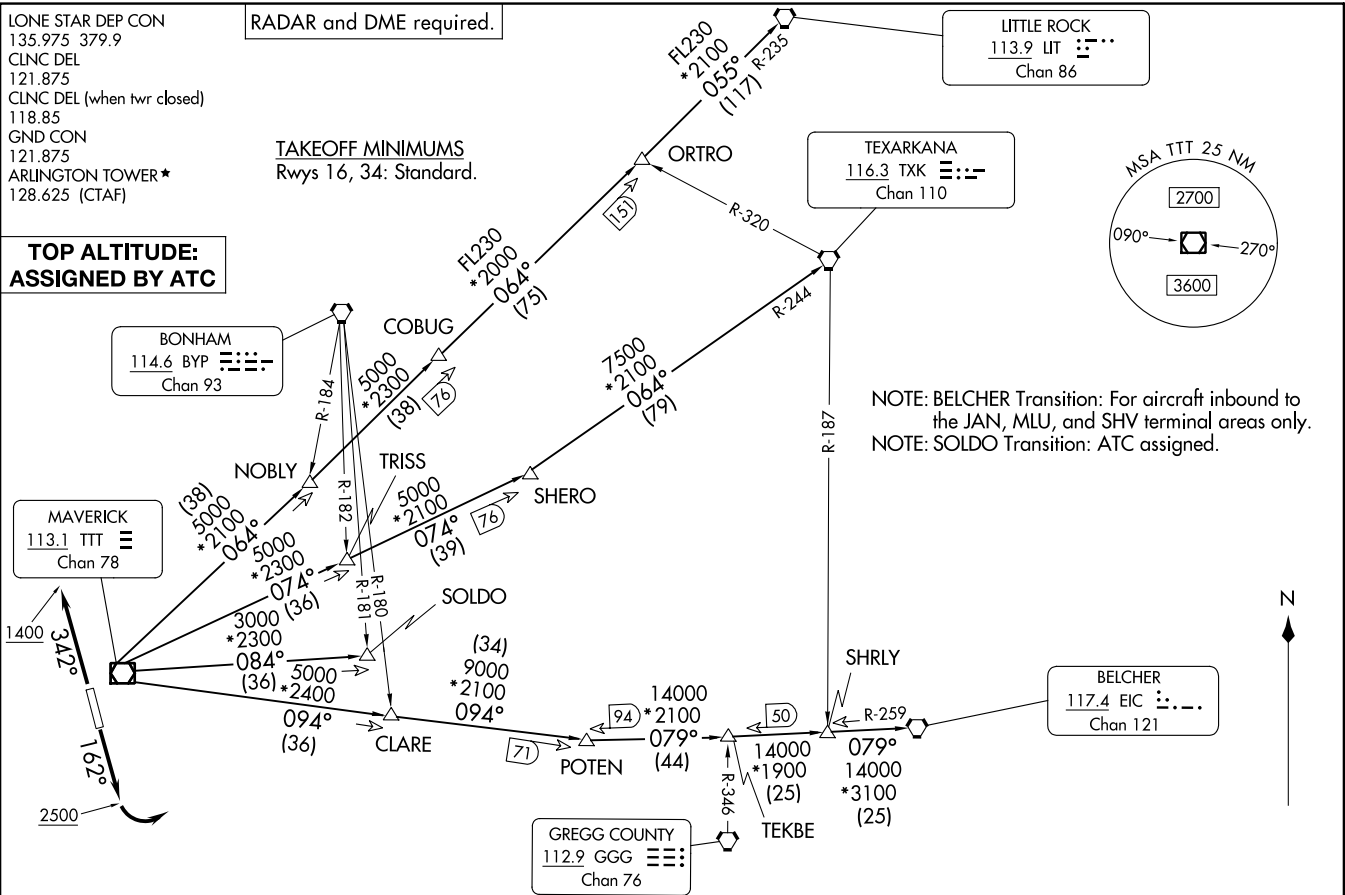
LITTLE ROCK  
113.9 LIT  
Chan 86

TEXARKANA  
116.3 TXK  
Chan 110



NOTE: BELCHER Transition: For aircraft inbound to the JAN, MLU, and SHV terminal areas only.  
NOTE: SOLDO Transition: ATC assigned.

BELCHER  
117.4 EIC  
Chan 121



(CONTINUED ON FOLLOWING PAGE)

NOTE: Chart not to scale.

DALLAS THREE DEPARTURE  
(DAL3, TTT) 24305

AL-5189 (FAA)

ARLINGTON MUNI (GKY)  
ARLINGTON, TEXAS

# DALLAS THREE DEPARTURE



## DEPARTURE ROUTE DESCRIPTION

TAKEOFF RUNWAY 16: Climb on heading 162° to 2500 before turning left.

TAKEOFF RUNWAY 34: Climb on heading 342° to 1400 before turning southeast bound.

When entering controlled airspace, fly assigned heading for RADAR vectors to appropriate route. Maintain ATC assigned altitude.

BELCHER TRANSITION (DALL3.EIC): From over TTT VOR/DME on TTT R-094 to POTEN, then on EIC R-259 to EIC VORTAC.

LITTLE ROCK TRANSITION (DALL3.LIT): From over TTT VOR/DME on TTT R-064 to ORTRO, then on LIT R-235 to LIT VORTAC.

SOLDO TRANSITION (DALL3.SOLDO): From over TTT VOR/DME on TTT R-084 to SOLDO.

TEXARKANA TRANSITION (DALL3.TXK): From over TTT VOR/DME on TTT R-074 to SHERO, then on TXK R-244 to TXK VORTAC.

SC-2, 28 NOV 2024 to 26 DEC 2024

SC-2, 28 NOV 2024 to 26 DEC 2024