

LOC/DME I-GKY <b>111.55</b> Chan 52 (Y)	APP CRS <b>342°</b>	Rwy Idg 6080 TDZE 620 Apt Elev 628
---	------------------------	---

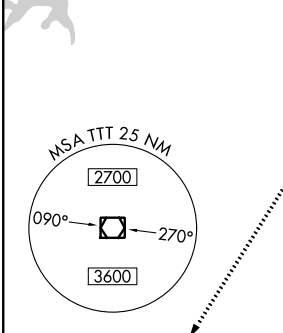
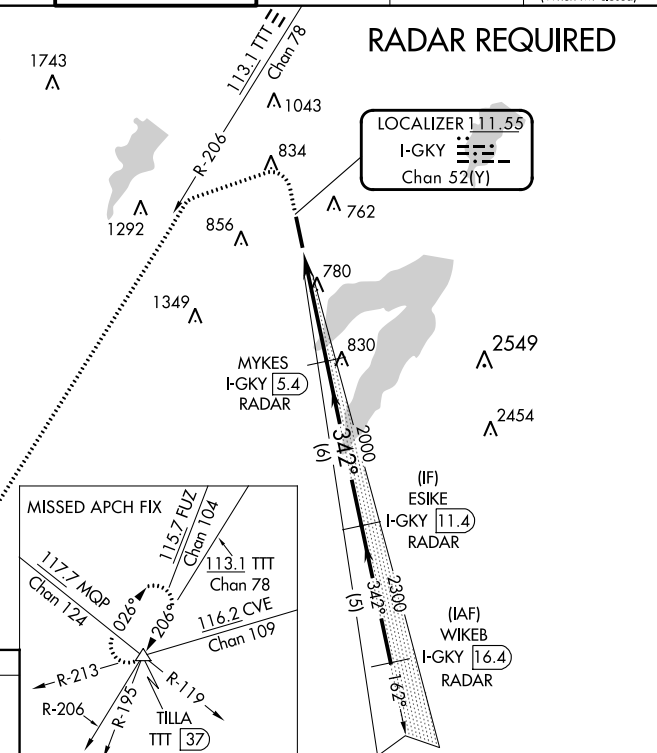
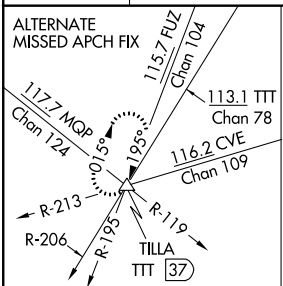
# ILS or LOC/DME RWY 34

ARLINGTON MUNI (GKY)

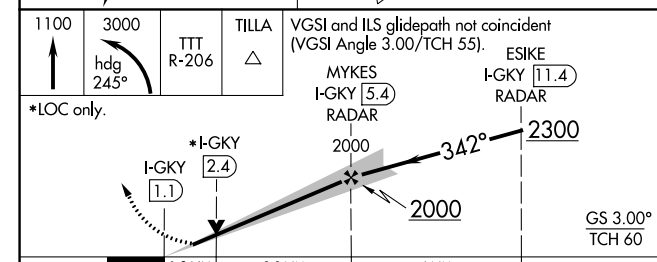
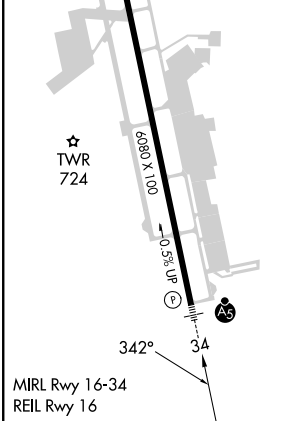
When local altimeter setting not received, use Grand Prairie Muni altimeter setting. Inop table does not apply to S-ILS 34.  
For inop MALSRS increase S-LOC 34 Cat A, B visibility to 1 mile.

**MALSRS**  
MISSED APPROACH: Climb to 1100 then climbing left turn to 3000 via heading 245° and TTT VOR/DME R-206 to TILLA INT/TTT 37 DME and hold.

ASOS <b>127.375</b>	LONE STAR APP CON <b>135.975 379.9</b>	ARLINGTON TOWER ★ <b>128.625 (CTAF)</b>	GND CON <b>121.875</b>	CLNC DEL <b>121.875</b>	CLNC DEL <b>118.85</b> (When twr closed)
------------------------	---	--	---------------------------	----------------------------	--



ELEV 628	TDZE 620
----------	----------



CATEGORY	A	B	C	D
S-ILS 34	820-3/4	200 (200-3/4)		NA
S-LOC 34	1060-3/4	440 (500-3/4)		NA
CIRCLING	1100-1 472 (500-1)	1140-1 512 (600-1)	1220-1 1/2 592 (600-1 1/2)	NA

SC-2, 28 NOV 2024 to 26 DEC 2024

SC-2, 28 NOV 2024 to 26 DEC 2024