

# RNAV (GPS) RWY 8

HOPKINSVILLE-CHRISTIAN COUNTY (HVC)

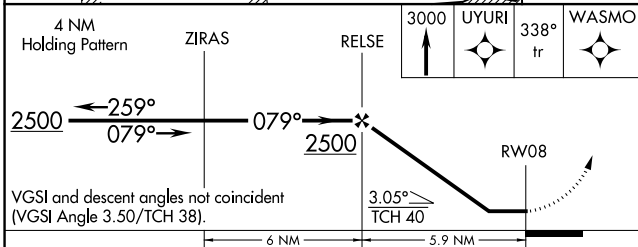
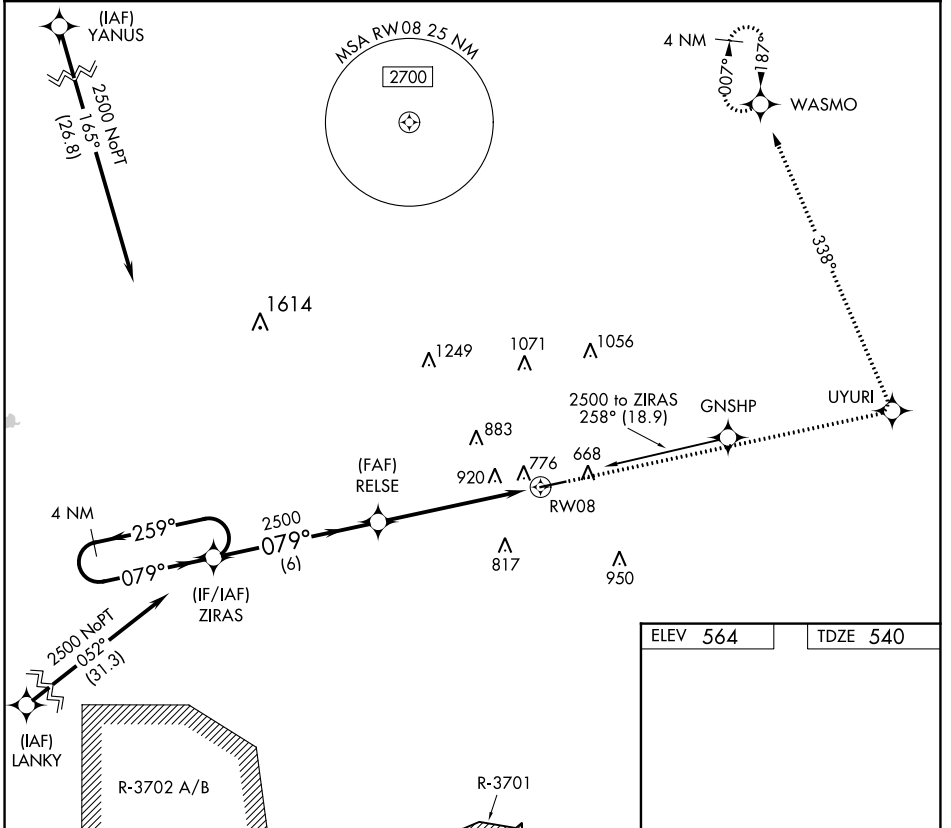
APP CRS	Rwy Idg	<b>5505</b>
<b>079°</b>	TDZE	<b>540</b>
	Apt Elev	<b>564</b>

RNP APCH.

**⚠ NA** Rwy 8 helicopter visibility reduction below 1 SM NA. When local altimeter setting not received, use Clarksville altimeter setting and increase all MDA 40 feet. Procedure NA at night.

MISSED APPROACH: Climb to 3000 direct UYURI and left turn via 338° track to WASMO and hold.

AWOS-3 <b>132.575</b>	CAMPBELL APP CON <b>118.1 269.525</b>	UNICOM <b>122.8 (CTAF) 0</b>
--------------------------	--	---------------------------------



ELEV 564	TDZE 540
----------	----------

Diagram of RWY 8 showing runway length 5505 X 100, 0.5% UP slope, and 079° to RW08 heading.

CATEGORY	A	B	C	D
LNVA MDA	1220-1	680 (700-1)	1220-2 680 (700-2)	1220-2 1/4 680 (700-2 1/4)

MIRL Rwy 8-26 0  
REIL Rwy 8 and 26 0

SE-1, 28 NOV 2024 to 26 DEC 2024

SE-1, 28 NOV 2024 to 26 DEC 2024