

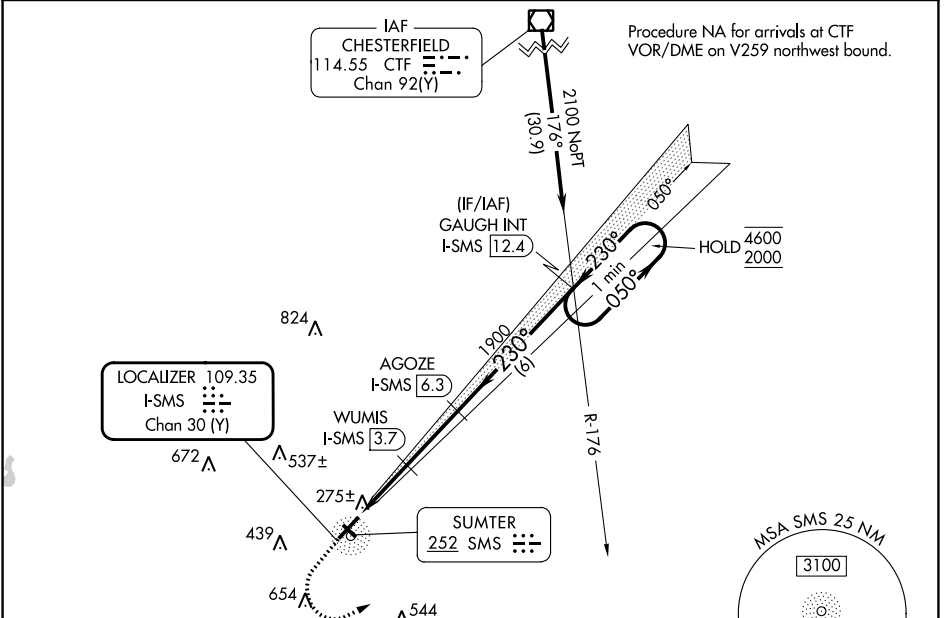
LOC/DME I-SMS 109.35 Chan 30 (Y)	APP CRS 230°	Rwy Idg TDZE 182 Apt Elev 182	5501
--	------------------------	---	-------------

ILS or LOC RWY 23

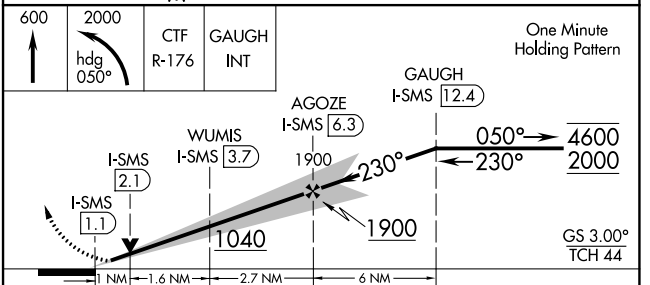
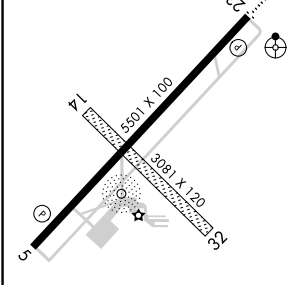
SUMTER (SMS)

DME required.	ODALS	MISSED APPROACH: Climb to 600 then climbing left turn to 2000 on heading 050° and CTF VOR/DME R-176 to GAUGH INT/I-SMS 12.4 DME and hold.
⚠ Circling NA to Rwy 14 and 32. Inop table does not apply to S-ILS 23 all Cats.		

AWOS-3 118.075	SHAW APP CON ★ 125.4	UNICOM 122.7 (CTAF)
--------------------------	--------------------------------	-------------------------------



ELEV 182	TDZE 182
----------	----------



CATEGORY	A	B	C	D
S-ILS 23	382- ³ / ₄		200 (200- ³ / ₄)	
S-LOC 23	540- ³ / ₄ 358 (400- ³ / ₄)		540- ⁷ / ₈ 358 (400- ⁷ / ₈)	
C CIRCLING	600-1 418 (500-1)	680-1 498 (500-1)	960-2 ¹ / ₄ 778 (800-2 ¹ / ₄)	960-2 ¹ / ₂ 778 (800-2 ¹ / ₂)

SE-2, 28 NOV 2024 to 26 DEC 2024

SE-2, 28 NOV 2024 to 26 DEC 2024