

VORTAC IRQ <b>113.9</b> Chan <b>86</b>	APP CRS <b>102°</b>	Rwy Idg TDZE Apt Elev	<b>N/A</b> <b>N/A</b> <b>529</b>
--	------------------------	-----------------------------	--

# VOR/DME-A

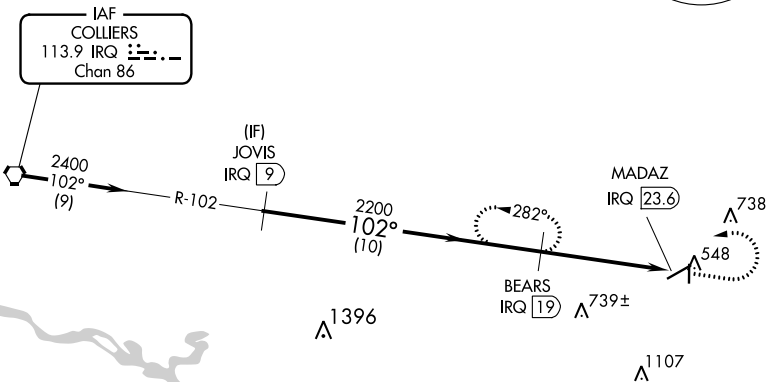
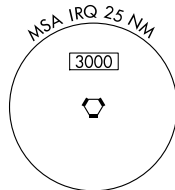
AIKEN RGNL (AIK)

**NA** When local altimeter setting not received, use Augusta Rgnl at Bush Fld altimeter setting and increase all MDAs 120 feet and increase Cat C visibility ¼ SM.

MISSED APPROACH: Climb to 1600 then climbing left turn to 2400 on IRQ VORTAC R-102 to BEARS/IRQ 19 DME and hold.

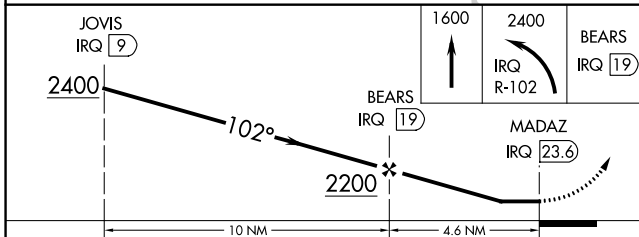
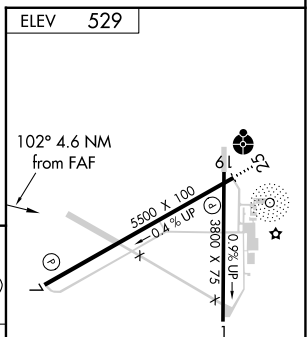
AWOS-3 <b>118.025</b>	AUGUSTA APP CON * <b>119.15 284.625</b>	CLNC DEL <b>126.075</b>	UNICOM <b>122.8</b> (CTAF) <b>0</b>
--------------------------	--	----------------------------	--

Procedure NA for arrivals at IRQ VORTAC on airway radials 062 CW 154.



SE-2, 28 NOV 2024 to 26 DEC 2024

SE-2, 28 NOV 2024 to 26 DEC 2024



CATEGORY	A	B	C	D
CIRCLING	980-1 451 (500-1)	1000-1¼ 471 (500-1¼)	1140-1¾ 611 (700-1¾)	1420-3 891 (900-3)

REIL Rwy 25  
MIRL Rwy 7-25 **0**