

# COULT SEVEN DEPARTURE

NC-1, 28 NOV 2024 to 26 DEC 2024

MINNEAPOLIS DEP CON  
126.5 335.65  
ATIS  
120.625  
CINC DEL  
121.3  
CINC DEL  
121.3  
121.85 (when hvr closed)  
ANOKA TOWER ★  
132.4

### TAKEOFF MINIMUMS

Rwy 9: Standard with minimum climb of 205' per NM to 1200, or alternatively, with standard takeoff minimums and a normal 200' per NM climb gradient; takeoff must occur no later than 1200' prior to DER.  
Rwy 18: 300-1 or standard with minimum climb of 370' per NM to 2600.  
Rwys 27, 36: Standard.

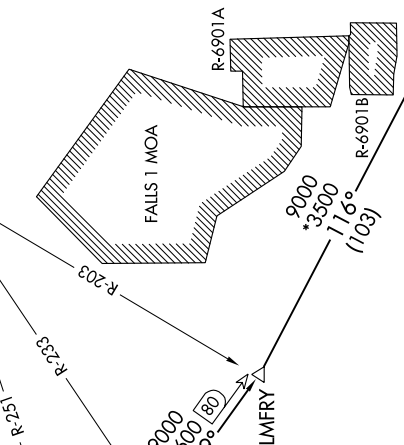


GOPHER  
117.3 GEP  
Chan 120

EAU CLAIRE  
113.65 EAU  
Chan 83(Y)



FLYING CLOUD  
117.7 FCM  
Chan 124



### DEPARTURE ROUTE DESCRIPTION

TAKEOFF ALL RUNWAYS: Fly assigned heading and altitude for RADAR vectors to intercept GEP R-119 to COULT INT/ GEP 61 DME, thence . . . . . on transition or assigned route. Expect clearance to filed altitude/ flight level 10 (ten) minutes after departure.

DELLS TRANSITION (COULT.DLL): From over COULT INT on GEP R-119 to LMFRY INT, then on DLL R-296 to DLL VORTAC.

NOTE: RADAR required.  
NOTE: Chart not to scale.

# COULT SEVEN DEPARTURE

NC-1, 28 NOV 2024 to 26 DEC 2024