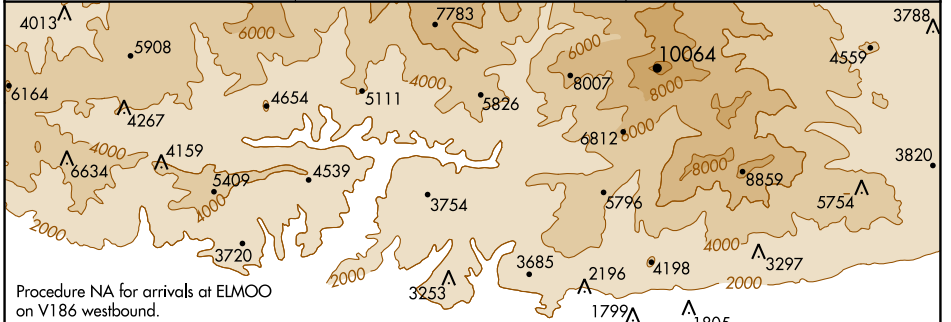


WAAS CH 45934 W06A	APP CRS 054°	Rwy Idg TDZE Apt Elev	3757 1430 1444
--	------------------------	-----------------------------	---

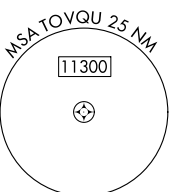
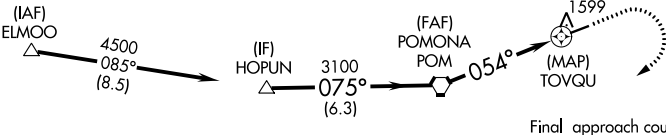
RNAV (GPS) RWY 6

CABLE (CCB)

RNP APCH.		MISSED APPROACH: Climb to 1900 then climbing right turn to 5500 direct ADAMM and hold, continue climb-in-hold to 5500.
AWOS-3P 119.525	SOCAL APP CON 125.5 349.0	UNICOM 123.0 (CTAF) 1



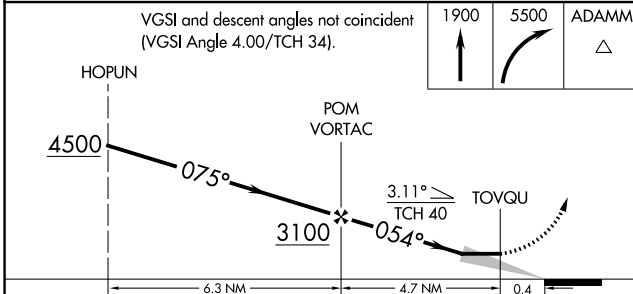
Procedure NA for arrivals at ELMOO on V186 westbound.



Final approach course offset 1.02°

ELEV 1444	TDZE 1430
-----------	-----------

VGSI and descent angles not coincident (VGSI Angle 4.00/TCH 34).		1900	5500	ADAMM
HOPUN	POM VORTAC	↑	↷	△
4500	3100			
075°	054°			
6.3 NM	4.7 NM			
				054°



CATEGORY	A	B	C	D
LP MDA	1780-1	350 (400-1)	1780-1½ 350 (400-1½)	NA
LNAV MDA	1940-1	510 (500-1)	1940-1½ 510 (500-1½)	NA
CIRCLING	2020-1	576 (600-1)	2140-2 696 (700-2)	NA

MIRL Rwy 6-24 **1**

SW-3, 28 NOV 2024 to 26 DEC 2024

SW-3, 28 NOV 2024 to 26 DEC 2024