

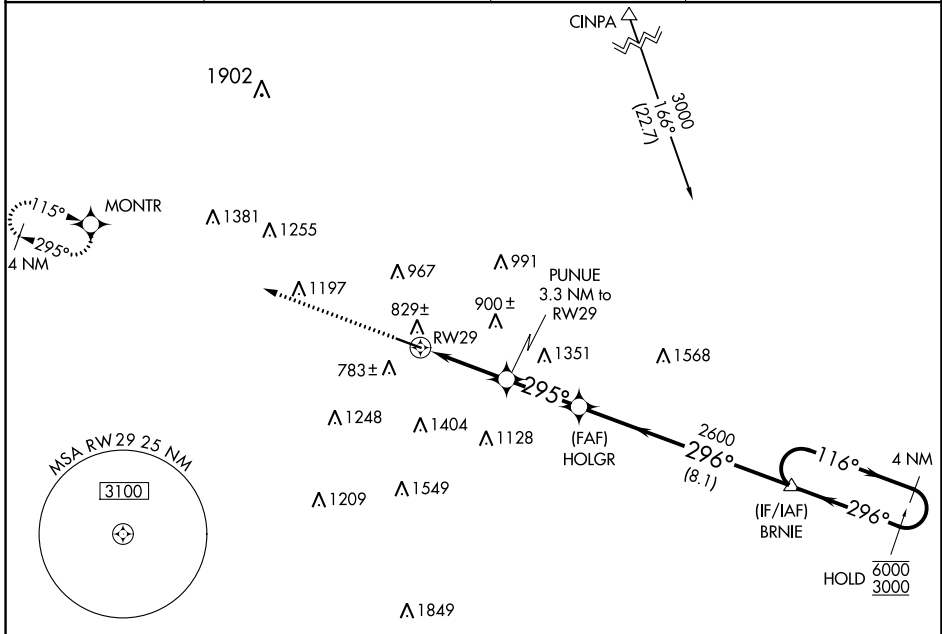
WAAS CH 61300 W29A	APP CRS 295°	Rwy Idg TDZE Apt Elev	5500 619 632
--	------------------------	-----------------------------	---

RNAV (GPS) RWY 29

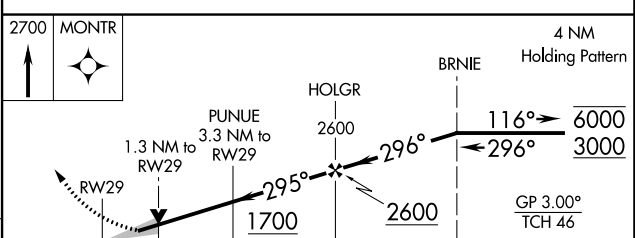
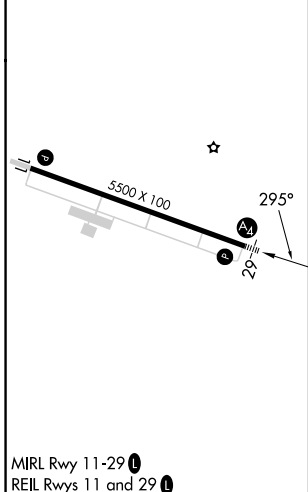
BUTLER COUNTY RGNL/HOGAN FLD (HAO)

RNP APCH - GPS.			MALS	MISSED APPROACH: Climb to 2700 direct MONTR and hold.
For uncompensated Baro-VNAV systems, LNAV/VNAV NA below -18°C or above 54°C. Inop table does not apply to LPV.				

ASOS 121.425	CINCINNATI APP CON 121.0 254.25	CLNC DEL 126.25	UNICOM 123.05 (CTAF) 1
------------------------	---	---------------------------	----------------------------------



ELEV 632	TDZE 619
-----------------	-----------------



CATEGORY	A	B	C	D
LPV DA		819-3/4	200 (200-3/4)	
LNAV/VNAV DA		1080-1 1/8	461 (500-1 1/8)	
LNAV MDA	1080-3/4	461 (500-3/4)	1080-1 1/8	461 (500-1 1/8)
CIRCLING	1280-1	648 (700-1)	1300-1 3/4 668 (700-1 3/4)	1760-3 1128 (1200-3)

EC-2, 28 NOV 2024 to 26 DEC 2024

EC-2, 28 NOV 2024 to 26 DEC 2024