

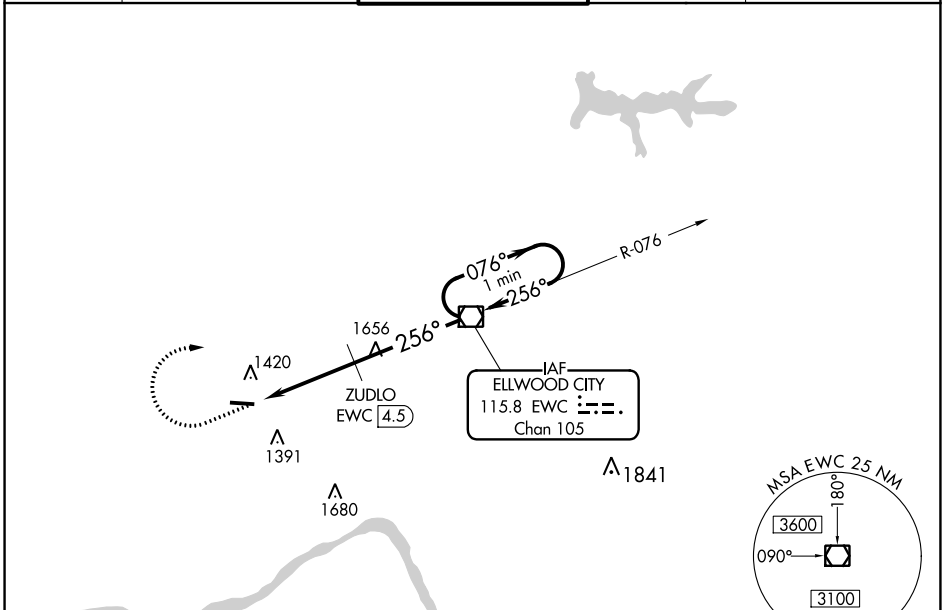
| | | | |
|-----------------|-------------|----------|-------------|
| VOR/DME EWC | APP CRS | Rwy Idg | 4501 |
| 115.8 | 256° | TDZE | 1253 |
| Chan 105 | | Apt Elev | 1253 |

VOR RWY 28
BEAVER COUNTY (BVI)

⚠ When local altimeter setting not received, use Pittsburgh Intl altimeter setting and increase MDAs 60 feet and visibility Circling Cats A and D ¼ SM and ZUDLO fix minimums S-28 Cats C/D ¼ SM and Circling Cat C ½ SM. Straight-in Rwy 28 NA at night, Circling Rwy 28 NA at night. Rwy 28 helicopter visibility reduction below 1 SM NA.

MISSED APPROACH: Climb to 3000 then right turn direct EWC VOR/DME and hold.

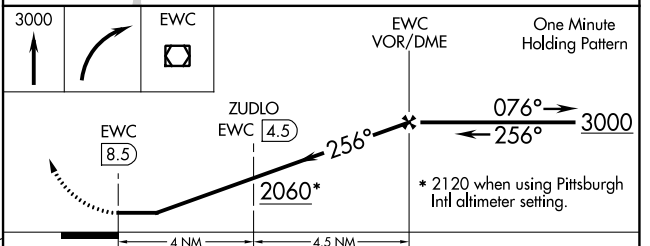
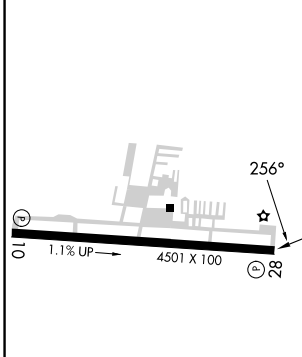
| | | | | |
|-----------------------|---|--|-------------------------|--|
| ATIS 118.35 | PITTSBURGH APP CON 124.75 338.2 | BEAVER COUNTY TOWER ★ 120.3 (CTAF) ① | GND CON 121.8 | CLNC DEL 124.85 (when twr closed) |
|-----------------------|---|--|-------------------------|--|



NE-4, 28 NOV 2024 to 26 DEC 2024

NE-4, 28 NOV 2024 to 26 DEC 2024

| | |
|-----------|-----------|
| ELEV 1253 | TDZE 1253 |
|-----------|-----------|



| CATEGORY | A | B | C | D |
|-----------------------------------|-----------------------|-------------------------|---------|------------------------------------|
| S-28 | 2060-1 807 (900-1) | 2060-1½ 807 (900-1½) | 2060-2½ | 807 (900-2½) |
| CIRCLING | 2060-2 | 807 (900-2) | 2060-2½ | 807 (900-2½) |
| ZUDLO FIX MINIMUMS (DME REQUIRED) | | | | |
| S-28 | 1740-1 | 487 (500-1) | 1740-1⅜ | 487 (500-1⅜) |
| CIRCLING | 1740-1 | 487 (500-1) | 1740-1½ | 1820-2 487 (500-1½) 567 (600-2) |

MIRL Rwy 10-28 ①
REIL Rwys 10 and 28 ①

FAF to MAP 8.5 NM

| | | | | | |
|---------|------|------|------|------|------|
| Knots | 60 | 90 | 120 | 150 | 180 |
| Min:Sec | 8:30 | 5:40 | 4:15 | 3:24 | 2:50 |