

WAAS CH 69528 W09A	APP CRS 089°	Rwy Idg TDZE 292 Apt Elev 302	6006
--	------------------------	---	-------------

RNAV (GPS) RWY 9

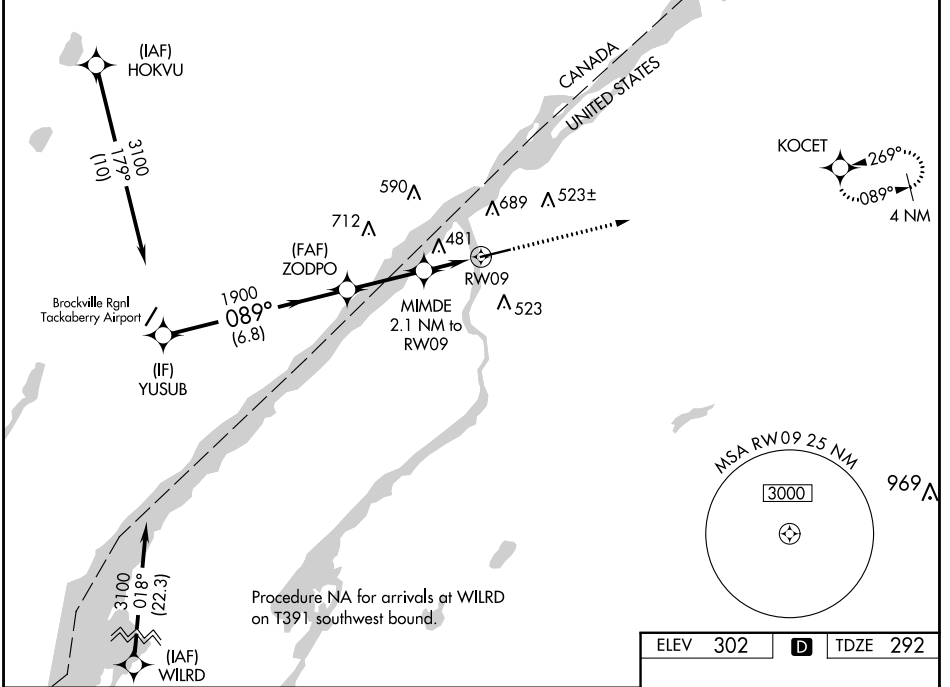
OGDENSBURG INTL (OGS)

RNP APCH - GPS.

▽ Rwy 9 helicopter visibility reduction below 3/4 SM NA. For uncompensated Baro-VNAV systems, LNAV/VNAV NA below -15°C or above 54°C.

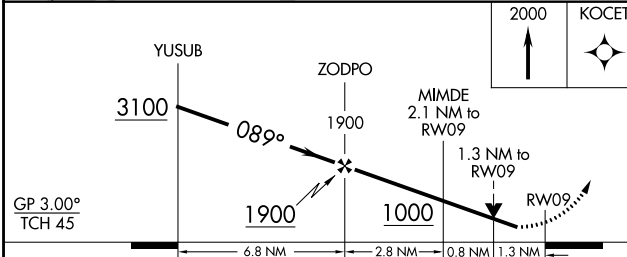
MISSED APPROACH: Climb to 2000 direct KOCET and hold.

AWOS-3 118,525	BOSTON CENTER 135.25 377.1	UNICOM 122.8 (CTAF) 0
--------------------------	--------------------------------------	---------------------------------



NE-2, 28 NOV 2024 to 26 DEC 2024

NE-2, 28 NOV 2024 to 26 DEC 2024



ELEV 302	D	TDZE 292
----------	----------	----------

LPV DA	543-3/4			251 (300-3/4)
LNAV/VNAV DA	781-13/8			489 (500-13/8)
LNAV MDA	740-1	448 (500-1)	740-13/8	448 (500-13/8)
C CIRCLING	760-1 458 (500-1)	1000-1 698 (700-1)	1000-2 698 (700-2)	1000-21/4 698 (700-21/4)

HIRL Rwy 9-27 0