

(TERPZ8.TERPZ) 24193

AL-5212 (FAA)

MONTGOMERY COUNTY AIRPARK (GAI)

# TERPZ EIGHT DEPARTURE (RNAV)

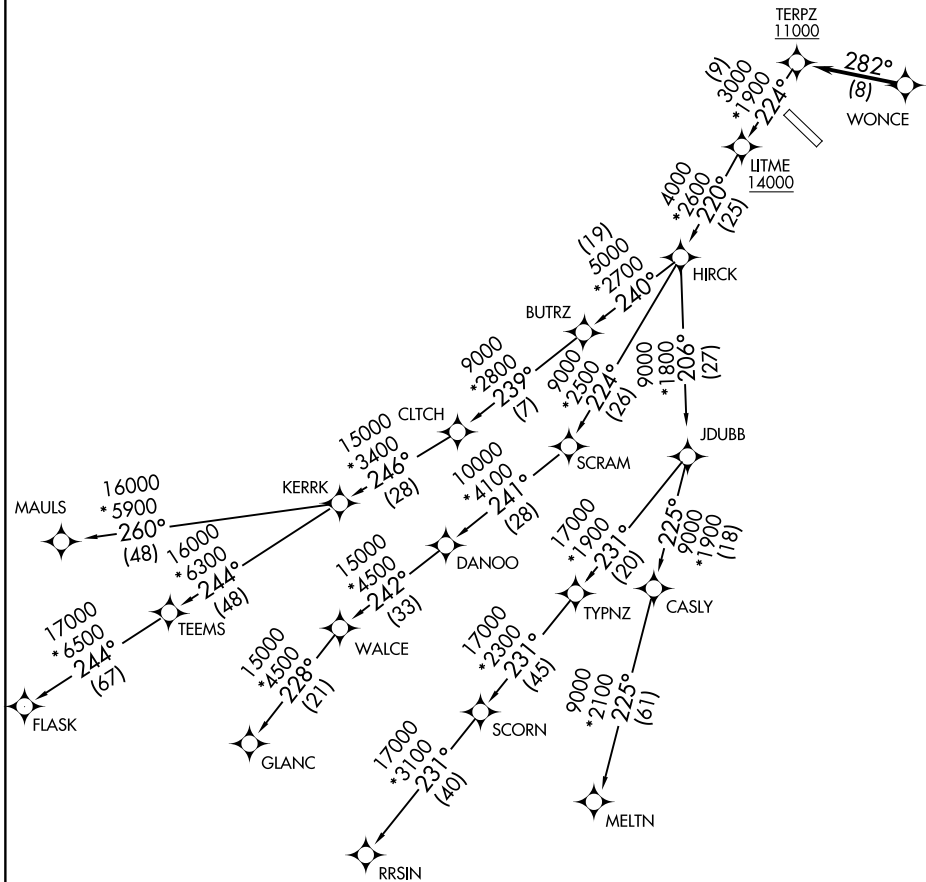
GAITHERSBURG, MARYLAND

POTOMAC DEP CON  
128.7 307.9  
AWOS-3PT  
128.275  
CLNC DEL  
121.6  
UNICOM  
123.075 (CTAF)

RNAV 1 - DME/DME/IRU or GPS.

RADAR required.

**TOP ALTITUDE:  
17000**



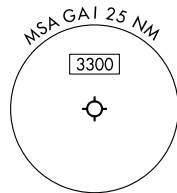
NE-3, 28 NOV 2024 to 26 DEC 2024

NE-3, 28 NOV 2024 to 26 DEC 2024

NOTE: Jet aircraft only.

TAKEOFF MINIMUMS:  
Rwy 14, 32: Standard.

NOTE: Chart not to scale.



# TERPZ EIGHT DEPARTURE (RNAV)

GAITHERSBURG, MARYLAND

(TERPZ8.TERPZ) 11JUL24

MONTGOMERY COUNTY AIRPARK (GAI)



DEPARTURE ROUTE DESCRIPTION

Climb on assigned heading for RADAR vectors to WONCE, thence. . . .

. . . then on track 282° to cross TERPZ at or above 11000, then on assigned transition.

Maintain 17000, expect filed altitude 10 minutes after departure.

CLTCH TRANSITION (TERPZ8.CLTCH)

FLASK TRANSITION (TERPZ8.FLASK)

GLANC TRANSITION (TERPZ8.GLANC)

MAULS TRANSITION (TERPZ8.MAULS)

MELTN TRANSITION (TERPZ8.MELTN)

RRSIN TRANSITION (TERPZ8.RRSIN)

NE-3, 28 NOV 2024 to 26 DEC 2024

NE-3, 28 NOV 2024 to 26 DEC 2024