

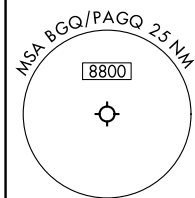
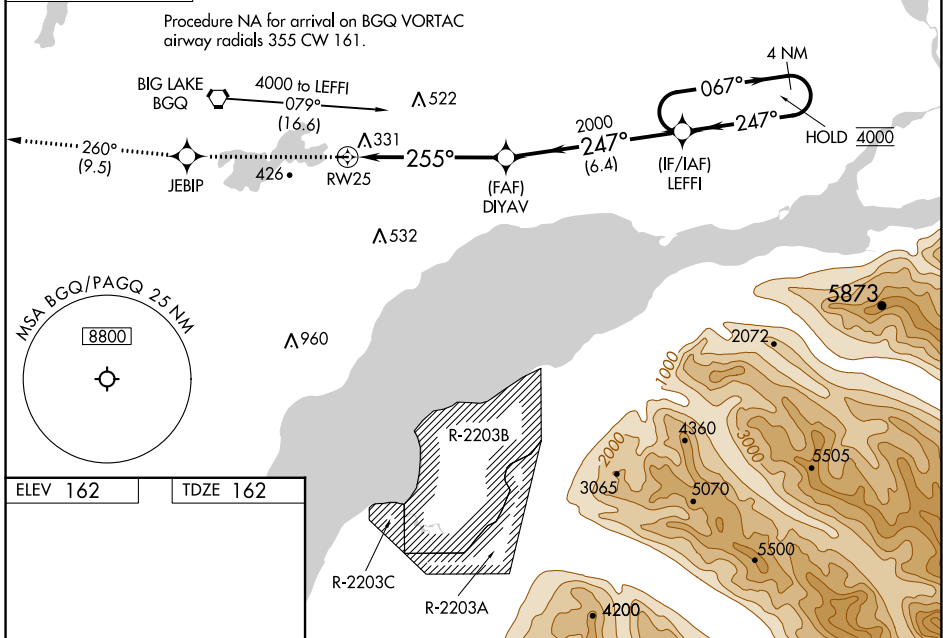
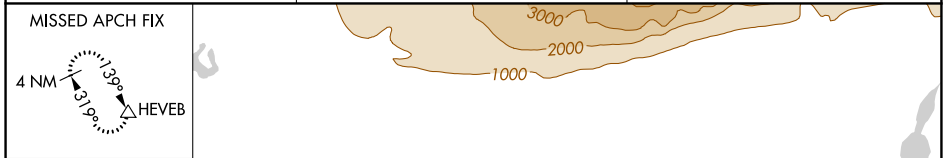
APP CRS	Rwy Idg	2450
255°	TDZE	162
	Apt Elev	162

RNAV (GPS) RWY 25

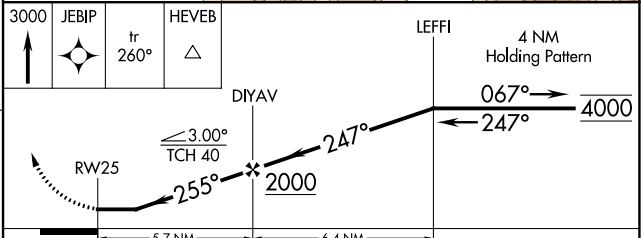
BIG LAKE (BGQ) (PAGQ)

RNP APCH.	MISSED APPROACH: Climb to 3000 direct JEBIP and on track 260° to HEVEB and hold.
<p>Procedure NA at night. Rwy 25 helicopter visibility reduction below 1 SM NA. Use Anchorage altimeter setting.</p>	

ANC ASOS 135.5	ANCHORAGE APP CON 118.6	CTAF 122.80
--------------------------	-----------------------------------	-----------------------



ELEV 162	TDZE 162
----------	----------



CATEGORY	A	B	C	D
LNAV MDA	1020-1 858 (900-1)	1020-1¼ 858 (900-1¼)	1020-2½ 858 (900-2½)	NA
<input checked="" type="checkbox"/> CIRCLING	1020-1¼	858 (900-1¼)	1020-2½ 858 (900-2½)	NA

AK, 31 OCT 2024 to 26 DEC 2024

AK, 31 OCT 2024 to 26 DEC 2024