

WAAS CH <b>56347</b> <b>W28A</b>	APP CRS <b>284°</b>	Rwy Idg <b>3000</b> TDZE <b>150</b> Apt Elev <b>150</b>
--	------------------------	---

# RNAV (GPS) RWY 28

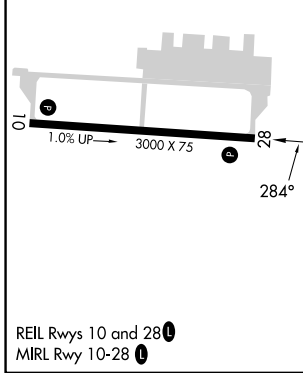
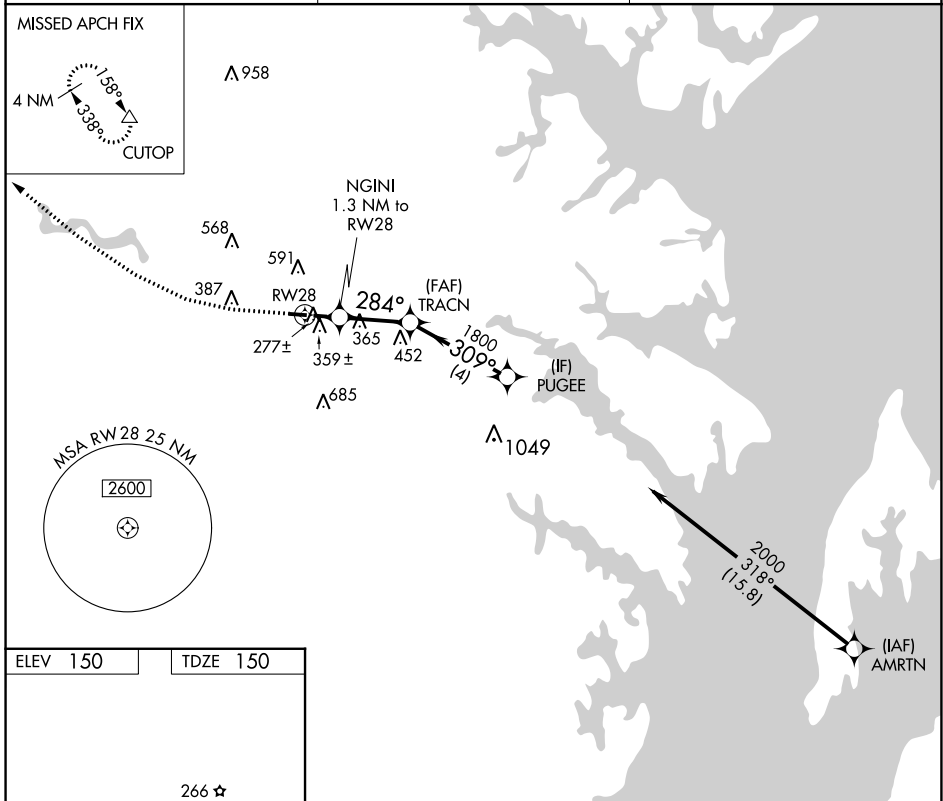
TIPTON (FME)

RNP APCH - GPS.

▼ Rwy 28 helicopter visibility reduction below 3/4 SM NA. Circling Rwy 10 NA at night.

▲ MISSED APPROACH: Climb to 570 then climbing right turn to 2000 direct CUTOP and hold.

AWOS-3 <b>123.925</b>	POTOMAC APP CON <b>119.7 290.475</b>	UNICOM <b>123.05 (CTAF) 0</b>
--------------------------	---	----------------------------------



570	2000	CUTOP	▲	VGSI and descent angles not coincident (VGSI Angle 4.00/TCH 57).
NGINI 1.3 NM to RW28		TRACN	PUGEE	
RW28		284°	1800	309° 2000
1.3 NM		2.5 NM	4 NM	
CATEGORY	A	B	C	D
LP MDA	540-1	390 (400-1)	NA	
LNAV MDA	620-1	470 (500-1)	NA	
CIRCLING	820-1 670 (700-1)	960-1 810 (900-1)	NA	

NE-3, 28 NOV 2024 to 26 DEC 2024

NE-3, 28 NOV 2024 to 26 DEC 2024