

RNAV (GPS) RWY 13

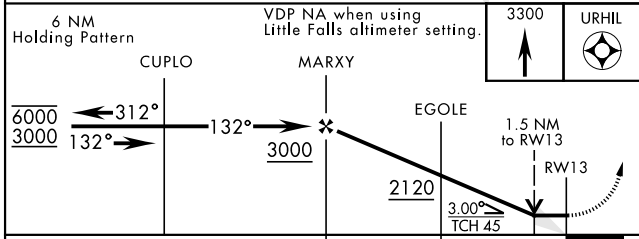
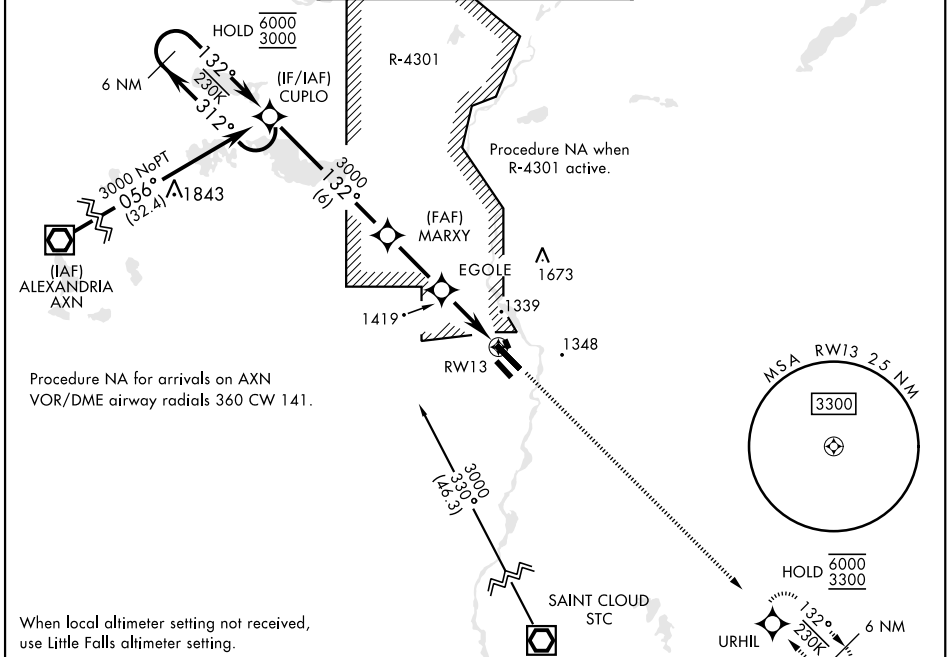
RAY S. MILLER AAF (KRYM)

APCH CRS	Rwy Idg	6100
132°	TDZE	1150
	Arprt Elev	1150

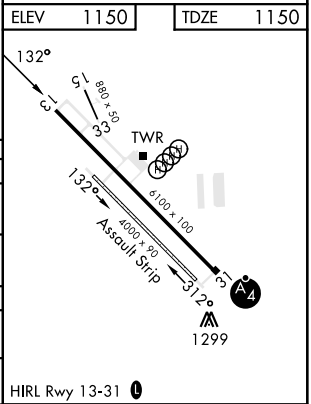
[USA]

RNP APCH-GPS	MISSED APPROACH: Climb to 3300 direct URHIL and hold.
RADAR required for procedure entry at STC VOR/DME.	

MINNEAPOLIS CENTER 118.05 239.0	MILLER TOWER ★ 126.2 254.4	CLNC DEL 126.2
------------------------------------	-------------------------------	-------------------



CATEGORY	A	B	C	D
RNAV MDA	1680-1 530 (600-1)	1680-1½ 530 (600-1½)		
C CIRCLING	1680-1 530 (600-1)	1720-1½ 570 (600-1½)	2080-3 930 (1000-3)	
LITTLE FALLS ALTIMETER SETTING				
RNAV MDA	1720-1 570 (600-1)	1720-1½ 570 (600-1½)		
C CIRCLING	1720-1 570 (600-1)	1760-1¾ 610 (700-1¾)	2120-3 970 (1000-3)	



NC-1, 28 NOV 2024 to 26 DEC 2024

NC-1, 28 NOV 2024 to 26 DEC 2024

RNAV (GPS) RWY 13