

WAAS CH 86936 W14A	APP CRS 141°	Rwy ldg 5600 TDZE 953 Apt Elev 953
---------------------------------	------------------------	---

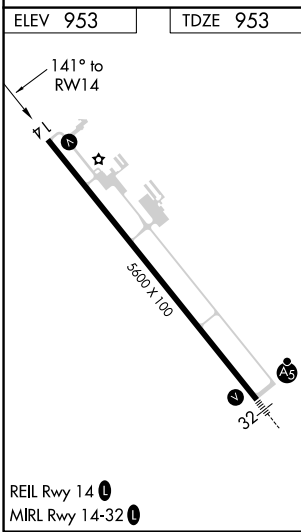
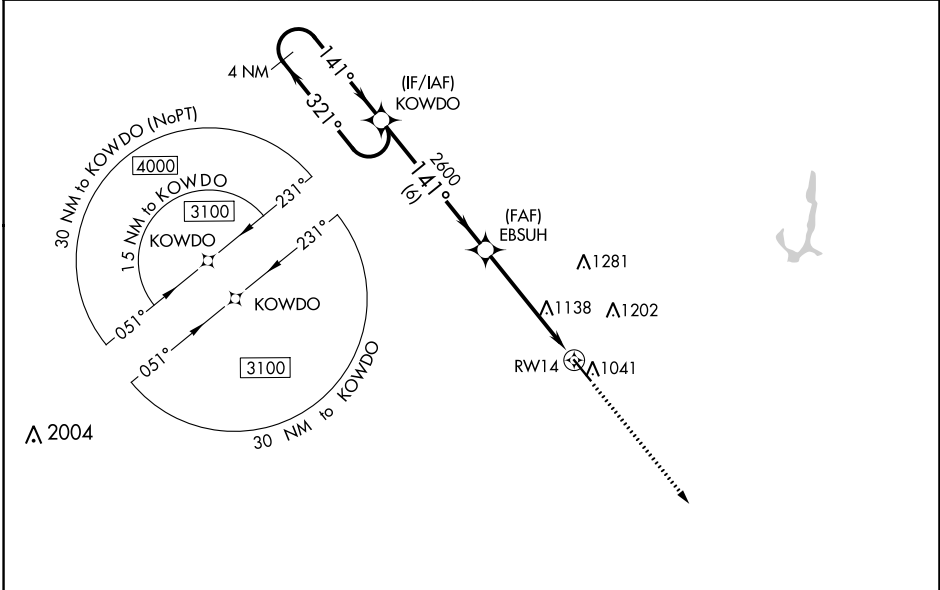
RNAV (GPS) RWY 14

NEWTON MUNI-EARL JOHNSON FLD (TNU)

⚠ DME/DME RNP-0.3 NA. When local altimeter setting not received use Des Moines altimeter setting and increase all DA/MDA 80 feet; increase LPV and LNAV/VNAV all Cats and LNAV Cats C/D and Circling Cat C/D visibility ¼ mile. For uncompensated Baro-VNAV systems, LNAV/VNAV NA below -13°C (9°F) or above 54°C (130°F). Rwy 14 helicopter visibility reduction below ¾ SM NA. Baro-VNAV and VDP NA when using Des Moines altimeter setting.

MISSED APPROACH: Climb to 2700 direct UBHIT and hold.

AWOS-3 132.275	DES MOINES APP CON 123.9 307.15	CLNC DEL 126.3	UNICOM 122.8 (CTAF)
--------------------------	---	--------------------------	-------------------------------



ELEV 953	TDZE 953
<p>4 NM Holding Pattern</p> <p>3100 ← 321°</p> <p>GP 3.00° TCH 39</p> <p>2600</p> <p>2600</p> <p>6 NM</p> <p>3.8 NM</p> <p>1.3 NM</p> <p>* 1.3 NM to RWY 14</p> <p>* LNAV only.</p>	
CATEGORY	A B C D
LPV DA	1203-7/8 250 (300-7/8)
LNAV/VNAV DA	1203-7/8 250 (300-7/8)
LNAV MDA	1420-1 467 (500-1) 1420-1 3/8 467 (500-1 3/8)
C CIRCLING	1420-1 467 (500-1) 1440-1 1/2 487 (500-1 1/2) 1520-1 1/2 567 (600-1 1/2) 1600-2 647 (700-2)

NC-3, 28 NOV 2024 to 26 DEC 2024

NC-3, 28 NOV 2024 to 26 DEC 2024