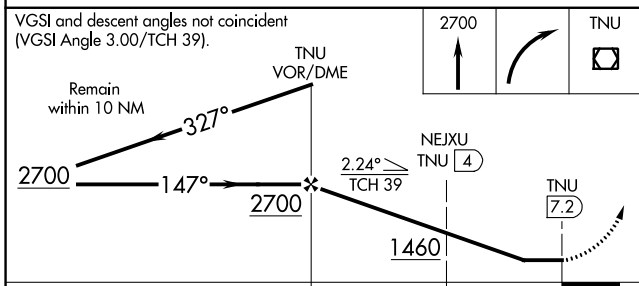
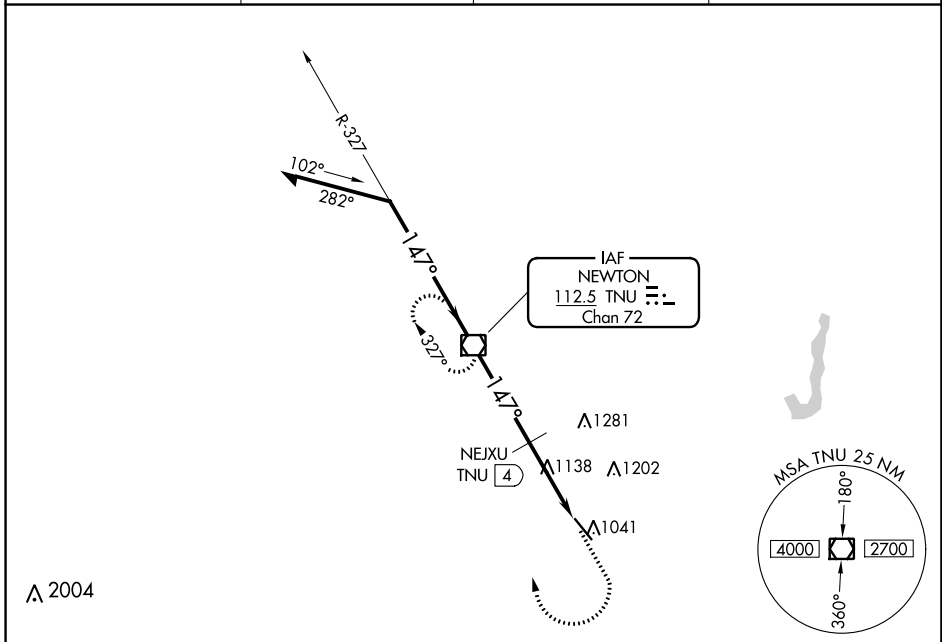


VOR/DME TNU 112.5 Chan 72	APP CRS 147°	Rwy Idg 5600 TDZE 953 Apt Elev 953
---	------------------------	---

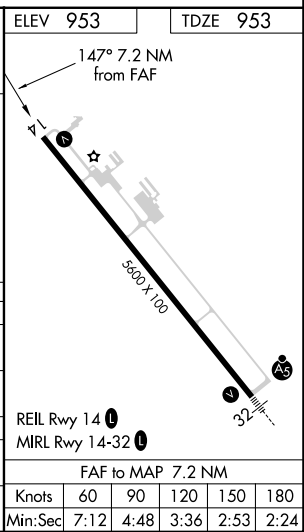
VOR RWY 14

NEWTON MUNI-EARL JOHNSON FLD (TNU)

▽ ▲ Rwy 14 helicopter visibility reduction below ¾ SM NA.	MISSED APPROACH: Climb to 2700 then right turn direct TNU VOR/DME and hold.		
AWOS-3 132.275	DES MOINES APP CON 123.9 307.15	CLNC DEL 126.3	UNICOM 122.8 (CTAF) 0



CATEGORY	A	B	C	D
S-14	1460-1	507 (600-1)	1460-1⅜ 507 (600-1⅜)	1460-1½ 507 (600-1½)
C CIRCLING	1460-1	507 (600-1)	1520-1½ 567 (600-1½)	1600-2 647 (700-2)
NEXJU DME MINIMUMS				
S-14	1400-1	447 (500-1)	1400-1⅜ 447 (500-1⅜)	1400-1½ 447 (500-1½)
C CIRCLING	1420-1 467 (500-1)	1440-1 487 (500-1)	1520-1½ 567 (600-1½)	1600-2 647 (700-2)



NC-3, 28 NOV 2024 to 26 DEC 2024

NC-3, 28 NOV 2024 to 26 DEC 2024