

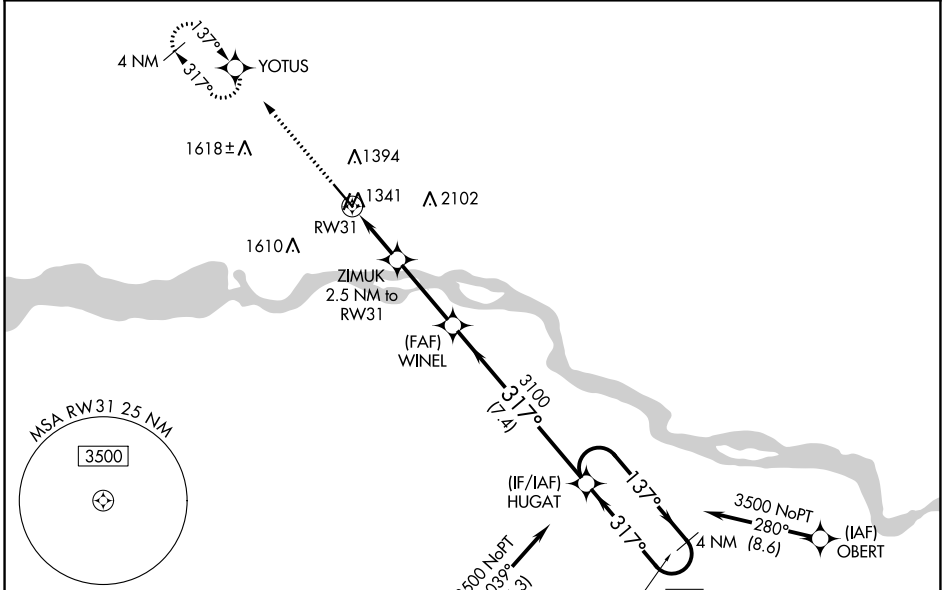
WAAS CH <b>50521</b> <b>W31A</b>	APP CRS <b>317°</b>	Rwy Idg TDZE Apt Elev	<b>6094</b> <b>1285</b> <b>1306</b>
--	------------------------	-----------------------------	---

# RNAV (GPS) RWY 31

CHAN GURNEY MUNI (YKN)

RNP APCH - GPS.	MALSR	MISSED APPROACH: Climb to 3500 direct YOTUS and hold, continue climb-in-hold to 3500.
<p><b>⚠</b> Circling NA east of Rwy 20 and northeast of Rwy 31. For uncompensated Baro-VNAV systems, LNAV/VNAV NA below -21°C or above 54°C. For inop ALS increase LPV and LNAV/VNAV all Cats visibility to ½ SM and LNAV visibility all Cats to 1 SM.</p>		

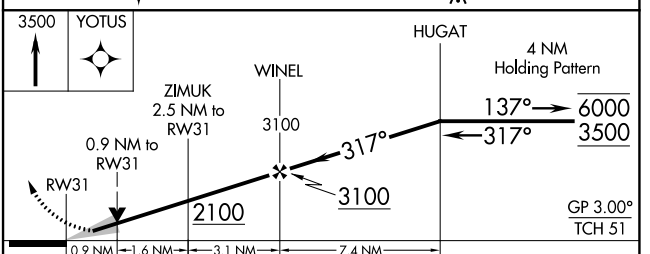
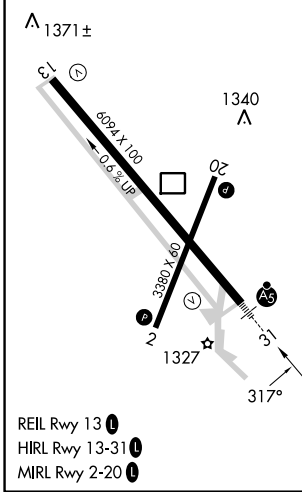
AWOS-3PT <b>119.05</b>	MINNEAPOLIS CENTER <b>125.025 235.625</b>	UNICOM <b>122.8 (CTAF)</b>
---------------------------	--	-------------------------------



NC-1, 28 NOV 2024 to 26 DEC 2024

NC-1, 28 NOV 2024 to 26 DEC 2024

ELEV 1306	TDZE 1285
-----------	-----------



CATEGORY	A		B	C	D
	LPV DA	1485-½		200 (200-½)	
LNAV/ VNAV DA	1535-½		250 (300-½)		
LNAV MDA	1600-½		315 (300-½)		
<b>C</b> CIRCLING	1760-1 454 (500-1)	1780-1 474 (500-1)	1980-2 674 (700-2)	1980-2¼ 674 (700-2¼)	