

LOC/DME I-SOP 111.5 Chan 52	APP CRS 054°	Rwy Idg TDZE Apt Elev	5502 455 459
---	------------------------	-----------------------------	---


ILS Z or LOC Z RWY 5

MOORE COUNTY(SOP)

DME required.
RADAR required for procedure entry.

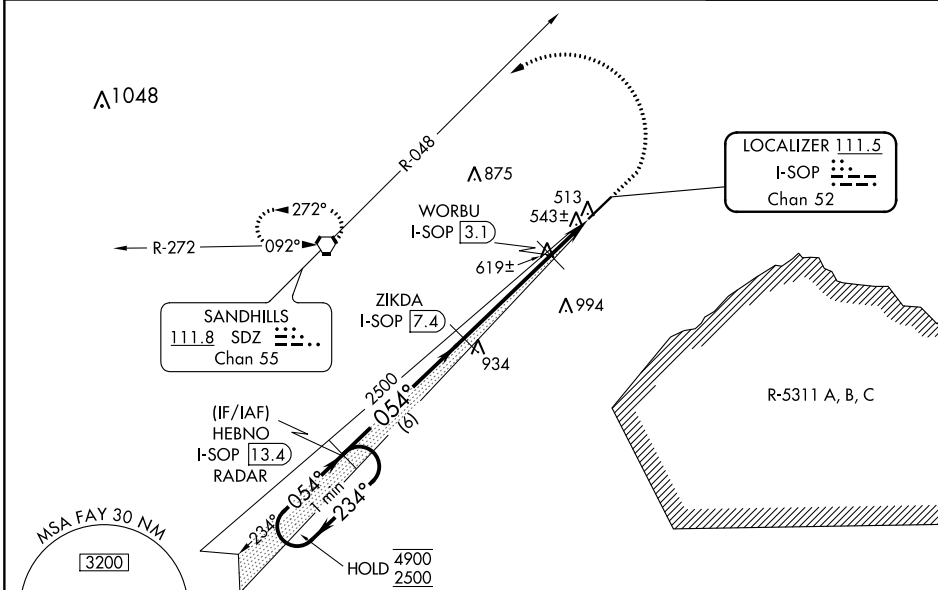
▼
▲

MALSR



MISSED APPROACH: Climb to 1400 then climbing left turn to 3300 on heading 300° and on SDZ VORTAC R-048 to SDZ VORTAC and hold.

AWOS-3PT 127.575	FAYETTEVILLE APP CON 127.8 343.725	CLNC DEL 127.0	UNICOM 123.05 (CTAF) 0
----------------------------	--	--------------------------	---



SE-2, 28 NOV 2024 to 26 DEC 2024

SE-2, 28 NOV 2024 to 26 DEC 2024

ELEV 459		D TDZE 455	
One Minute Holding Pattern		1400	3300
HEBNO I-SOP 13.4 RADAR		hdg 300°	SDZ R-048
ZIKDA I-SOP 7.4		WORBU I-SOP 3.1	*LOC only
4900	2500	*I-SOP 2.1	I-SOP 1.1
GS 3.00°	TCH 39	*1120	
6 NM		4.3 NM	
CATEGORY		A B C D	
S-ILS 5		655-1/2 200 (200-1/2)	
S-LOC 5		800-1/2 345 (400-1/2) 800-5/8 345 (400-5/8)	
CIRCLING		880-1 920-1 1100-1 1/4 1360-3 421 (500-1) 461 (500-1) 641 (700-1 3/4) 901 (1000-3)	

