

WAAS CH <b>42726</b> <b>W23A</b>	APP CRS <b>234°</b>	Rwy Idg <b>5722</b> TDZE <b>443</b> Apt Elev <b>459</b>
--	------------------------	---

# RNAV (GPS) RWY 23

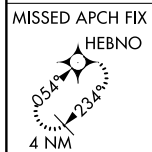
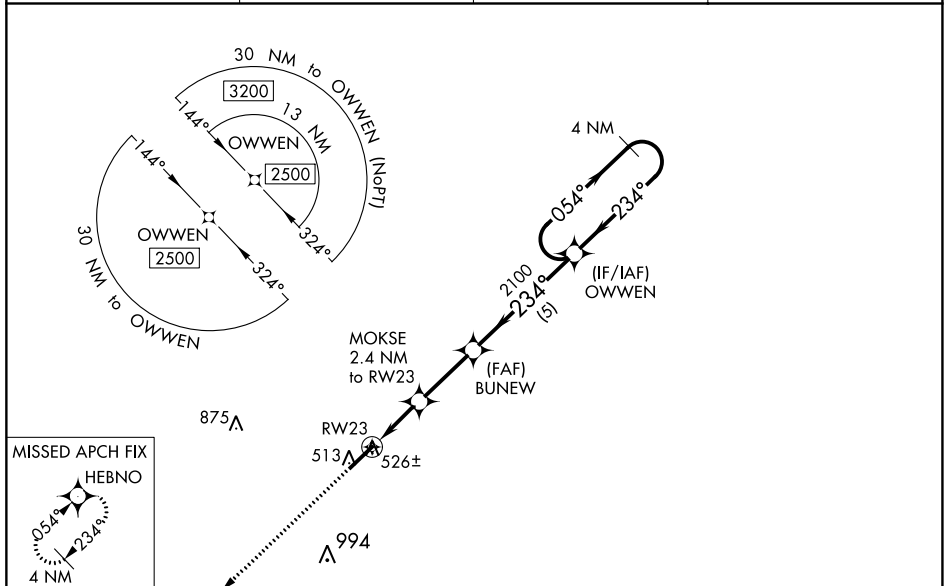
MOORE COUNTY (SOP)

RNP APCH.

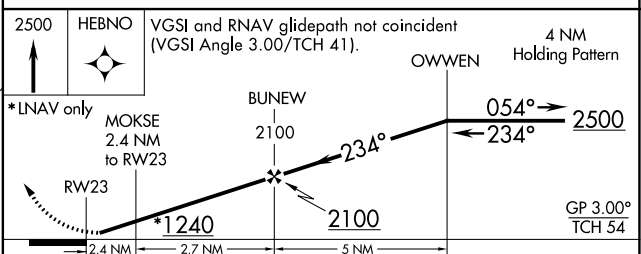
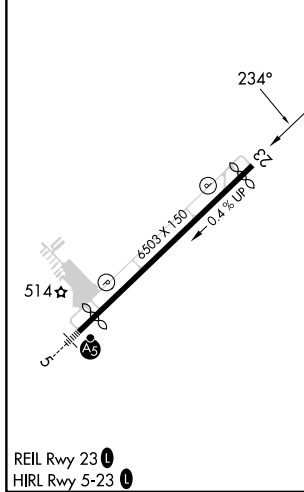
**▼** Baro-VNAV NA when using Sanford altimeter setting. For uncompensated Baro-VNAV systems, LNAV/VNAV NA below -15°C or above 54°C. When local altimeter setting not received, use Sanford altimeter setting and increase all DA 88 feet and all MDA 100 feet; increase LNAV Cats C/D visibility  $\frac{3}{8}$  mile and Circling Cat C visibility  $\frac{1}{2}$  mile. Rwy 23 helicopter visibility reduction below  $\frac{3}{4}$  SM NA.

**MISSED APPROACH:**  
Climb to 2500 direct HEBNO and hold.

AWOS-3PT <b>127.575</b>	FAYETTEVILLE APP CON <b>127.8 343.725</b>	CLNC DEL <b>127.0</b>	UNICOM <b>123.05 (CTAF) 0</b>
----------------------------	--	--------------------------	----------------------------------



ELEV <b>459</b>	<b>D</b>	TDZE <b>443</b>
-----------------	----------	-----------------



CATEGORY	A	B	C	D
LPV DA		693-1	250 (300-1)	
LNAV/VNAV DA		699-1	256 (300-1)	
LNAV MDA		780-1	337 (400-1)	
<b>C</b> CIRCLING	880-1 421 (500-1)	920-1 461 (500-1)	1100-1 $\frac{3}{4}$ 641 (700-1 $\frac{3}{4}$ )	1360-3 901 (1000-3)

SE-2, 28 NOV 2024 to 26 DEC 2024

SE-2, 28 NOV 2024 to 26 DEC 2024