


LOC/DME I-UNV <b>111.7</b> Chan 54	APP CRS <b>244°</b>	Rwy Idg TDZE Apt Elev	<b>6701</b> <b>1218</b> <b>1231</b>
--	------------------------	-----------------------------	---

# ILS or LOC RWY 24

STATE COLLEGE RGNL (UNV)

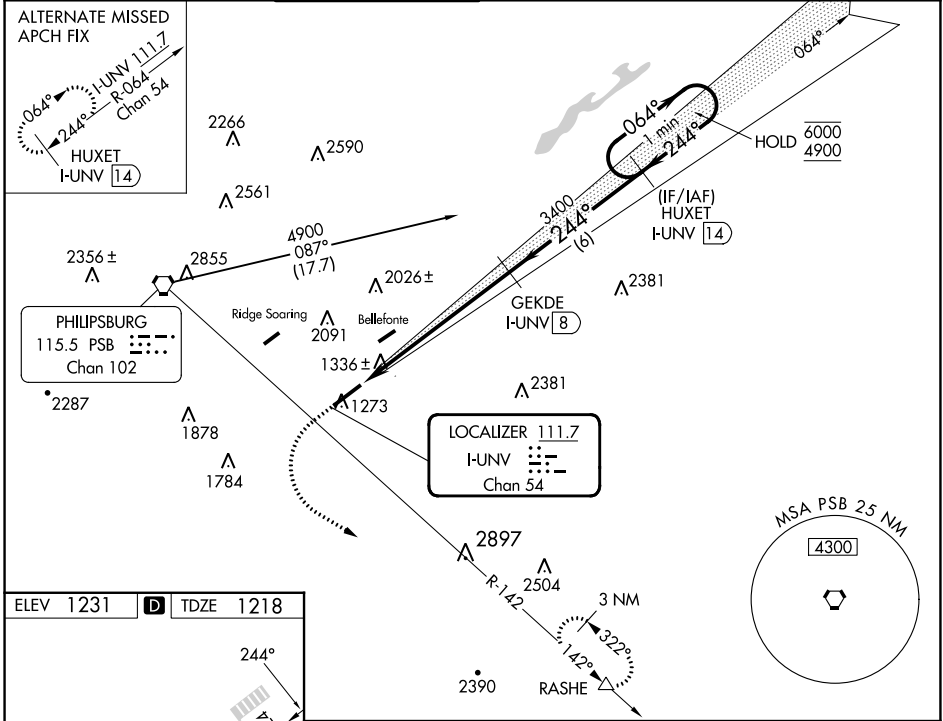
DME required.

**⚠** Circling NA northwest of Rwy 6-24.  
\* RVR 1800 authorized with use of FD or AP or HUD to DA (NA when using Clearfield altimeter setting).

MALSR 

MISSED APPROACH: Climb to 2600, then climbing left turn to 4100 on heading 112°, and PSB VORTAC R-142 to RASHE and hold.

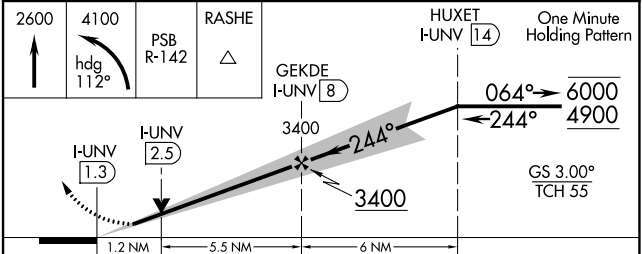
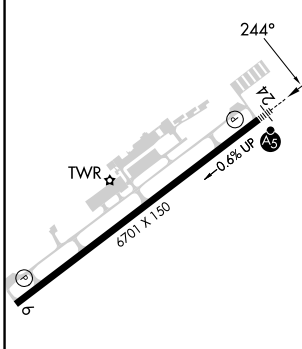
D-ATIS <b>127.65</b>	NEW YORK CENTER <b>134.8 338.3</b>	UNIVERSITY PARK ★ <b>128.475</b> (CTAF) <b>0</b>	GND CON <b>125.725</b>	CLNC DEL <b>125.725</b>	CLNC DEL <b>118.55</b> (When twr closed)	UNICOM <b>122.95</b>
-------------------------	---------------------------------------	---	---------------------------	----------------------------	--	-------------------------



NE-4, 28 NOV 2024 to 26 DEC 2024

NE-4, 28 NOV 2024 to 26 DEC 2024

ELEV 1231	<b>D</b>	TDZE 1218
-----------	----------	-----------



REIL Rwy 6 <b>0</b>	HIRL Rwy 6-24 <b>0</b>	FAF to MAP 6.8 NM				
Knots	60	90	120	150	180	
Min:Sec	6:48	4:32	3:24	2:43	2:16	
CATEGORY	A		B		C	D
S-ILS 24 *	1418/24		200 (200-½)			
S-LOC 24	1640/24	422 (500-½)	1640/40		422 (500-¾)	
CIRCLING	1640-1 409 (500-1)	1700-1 469 (500-1)	1940-2 709 (800-2)	2560-3 1329 (1400-3)		