

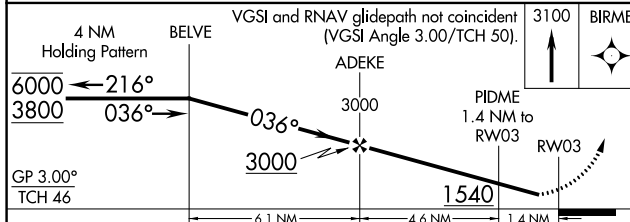
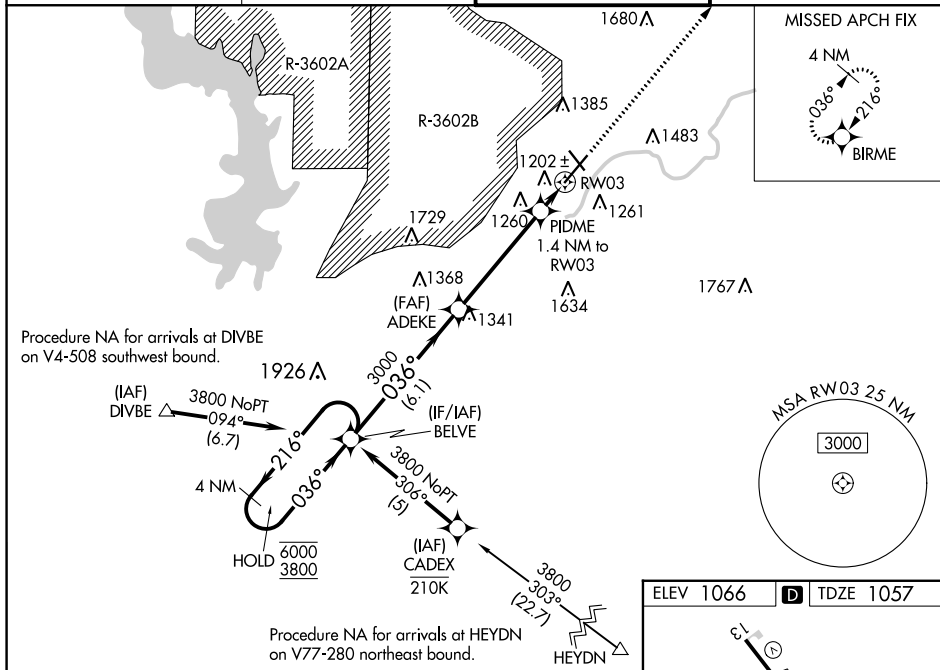
WAAS CH 73018 W03A	APP CRS 036°	Rwy Idg TDZE Apt Elev	7030 1057 1066
--	------------------------	-----------------------------	---

RNAV (GPS) RWY 3

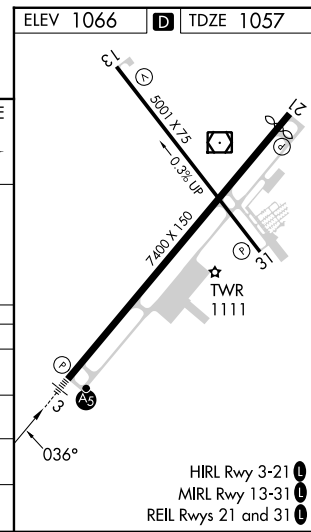
MANHATTAN RGNL (MHK)

RNP APCH - GPS.	MALSRL	MISSED APPROACH: Climb to 3100 direct BIRME and hold.
<p>⚠ Circling NA northwest of Rwy 3-21. Rwy 3 helicopter visibility reduction below 3/4 SM NA. Inop table does not apply to LPV all Cats. For uncompensated Baro-VNAV systems, LNAV/VNAV NA below -20°C or above 54°C. For inop ALS, increase LNAV/VNAV all Cats visibility to 1 1/2 SM, increase LNAV Cats A/B visibility to 1 SM and LNAV Cats C/D visibility to 1 1/2 SM.</p>		

ASOS 119.075	MARSHALL AAF GCA* 121.25 254.35	MANHATTAN TOWER* 118.55 (CTAF) 0	GND CON 121.85
------------------------	---	--	--------------------------



CATEGORY	A	B	C	D
LPV DA		1257-1/2	200 (200-1/2)	
LNAV/VNAV DA		1441-3/4	384 (400-3/4)	
LNAV MDA		1460-3/4	403 (400-3/4)	
CIRCLING	1540-1	1620-1	1920-2 1/2	1920-2 3/4
	474 (500-1)	554 (600-1)	854 (900-2 1/2)	854 (900-2 3/4)



NC-2, 28 NOV 2024 to 26 DEC 2024

NC-2, 28 NOV 2024 to 26 DEC 2024