

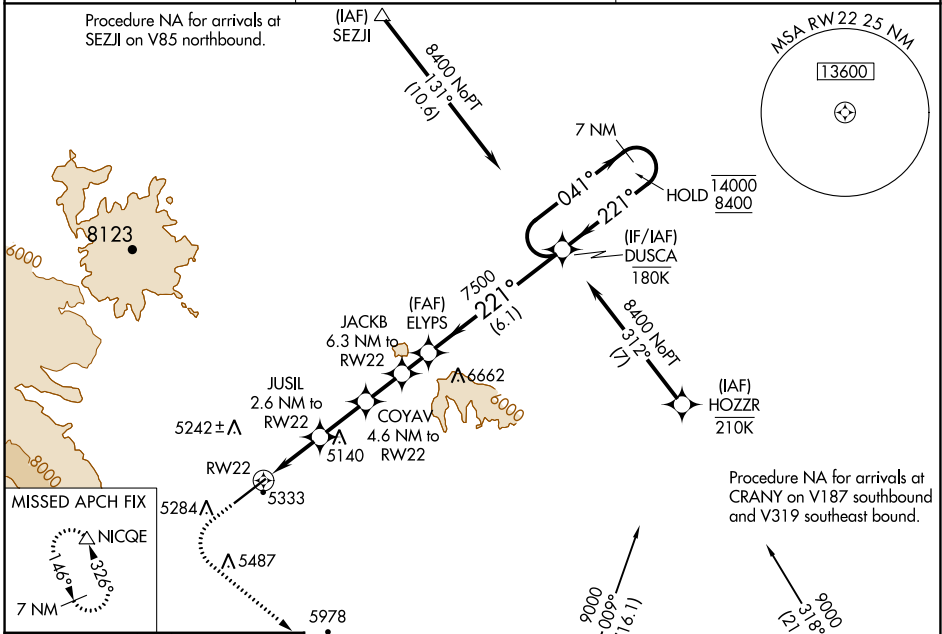
WAAS CH 90543 W22A	APP CRS 221°	Rwy Idg TDZE Apt Elev	7178 5076 5102
--	------------------------	-----------------------------	---

RNAV (GPS) RWY 22

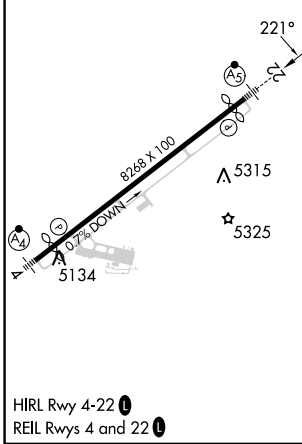
YELLOWSTONE RGNL (COD)

RNP APCH. ▽ ▲ ❄️ -10°C	MALSR AS	MISSED APPROACH: (Do not exceed 185K until NICQE) Climb to 5740 then climbing left turn to 9600 direct NICQE and hold, continue climb-in-hold to 9600.
---------------------------------	-------------	---

AWOS-3PT 135.075	SALT LAKE CENTER 127.75 351.9	UNICOM 122.8 (CTAF) 0
----------------------------	---	---------------------------------



ELEV 5102	D	TDZE 5076
-----------	---	-----------



5740	9600	NICQE						
			JUSIL 2.6 NM to RW22	COYAV 4.6 NM to RW22	JACKB 6.3 NM to RW22	ELYPS 7500	DUSCA 7 NM Holding Pattern	
			*1.4 NM to RW22					
			5940*	6580*	7120*	7500	041° → 14000	← 221° 8400
			1.4	1.2	2.1 NM	1.6 NM	1.2 NM	6.1 NM

CATEGORY	A	B	C	D
LPV DA	5399-1		323 (300-1)	
LNAV MDA	5600-1	524 (500-1)	5600-1½	524 (500-1½)
CIRCLING	5780-1 678 (700-1)	5900-1 798 (800-1)	5940-2½ 838 (900-2½)	7000-3 1898 (1900-3)

NW-1, 28 NOV 2024 to 26 DEC 2024

NW-1, 28 NOV 2024 to 26 DEC 2024