

|             |          |             |
|-------------|----------|-------------|
| APP CRS     | Rwy Idg  | <b>5488</b> |
| <b>104°</b> | TDZE     | <b>27</b>   |
|             | Apt Elev | <b>28</b>   |

# RNAV (GPS) RWY 12

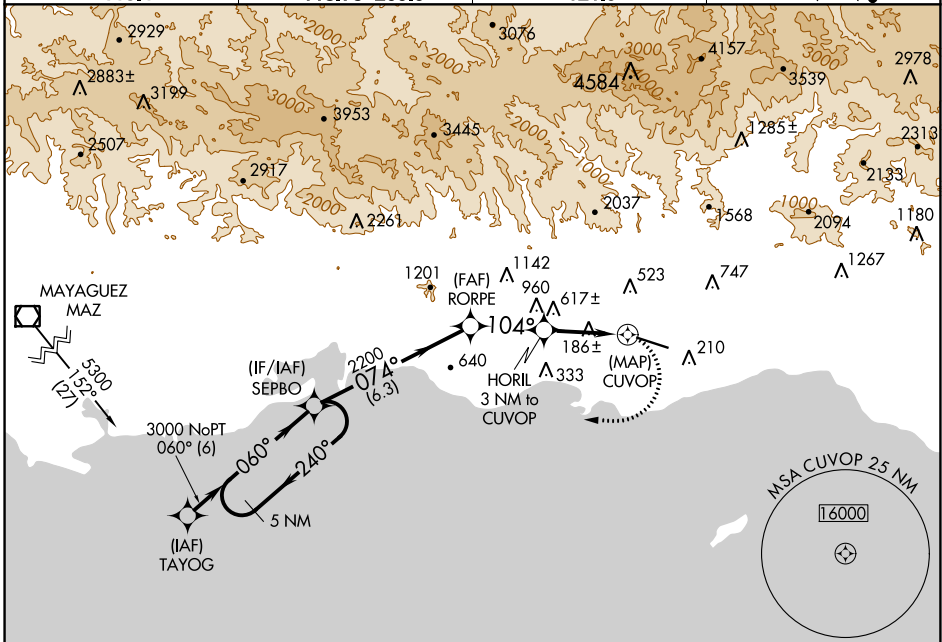
MERCEDITA (PSE) (TJPS)

RNP APCH-GPS.

▼ Obtain local altimeter setting on CTAF; when not received use Luis Munoz Marin Intl altimeter setting. Procedure NA at night. Rwy 12, 30 helicopter visibility reduction below 1 SM NA. Circling NA for Cats C and D northeast of Rwy 12-30.

MISSED APPROACH: Climbing right turn to 3000 direct SEPBO and hold.

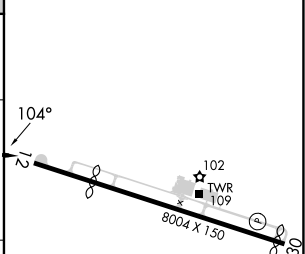
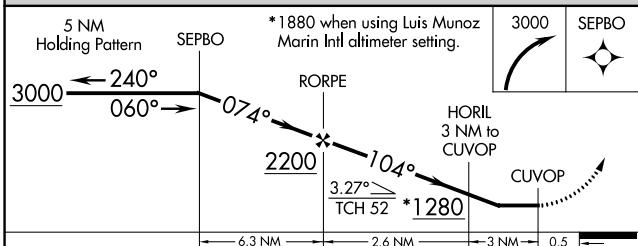
|              |                     |              |                       |
|--------------|---------------------|--------------|-----------------------|
| AWOS-3PT     | SAN JUAN CENTER     | CLNC DEL     | UNICOM                |
| <b>118.4</b> | <b>118.75 269.0</b> | <b>121.9</b> | <b>122.7 (CTAF) 0</b> |



SE-3, 28 NOV 2024 to 26 DEC 2024

SE-3, 28 NOV 2024 to 26 DEC 2024

|         |                  |
|---------|------------------|
| ELEV 28 | <b>D</b> TDZE 27 |
|---------|------------------|



| CATEGORY   | A                         | B                         | C                       | D                       |
|--|---------------------------|---------------------------|-------------------------|-------------------------|
| LNAV MDA   | 880-1<br>853 (900-1)      | 880-1¼<br>853 (900-1¼)    | 880-2½<br>853 (900-2½)  | 880-2¾<br>853 (900-2¾)  |
| CIRCLING   | 880-1¼<br>852 (900-1¼)    | 852 (900-1¼)              | 880-2½<br>852 (900-2½)  | 1040-3<br>1012 (1100-3) |
| LUIS MUNOZ MARIN INTL ALTIMETER SETTING MINIMUMS |                           |                           |                         |                         |
| LNAV MDA   | NA                        |                           |                         |                         |
| CIRCLING   | 1480-1¼<br>1452 (1500-1¼) | 1480-1½<br>1452 (1500-1½) | 1480-3<br>1452 (1500-3) | 1640-3<br>1612 (1700-3) |

HIRL Rwy 12-30 0  
REIL Rwy 12 and 30 0