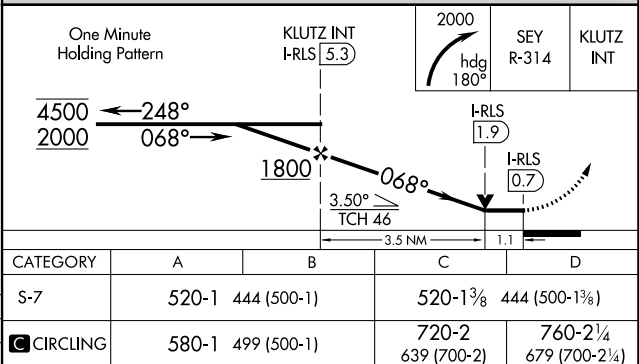
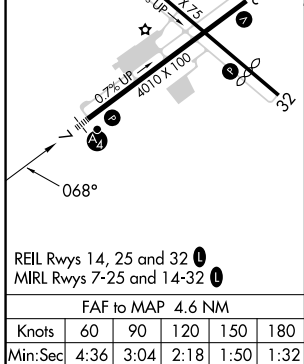
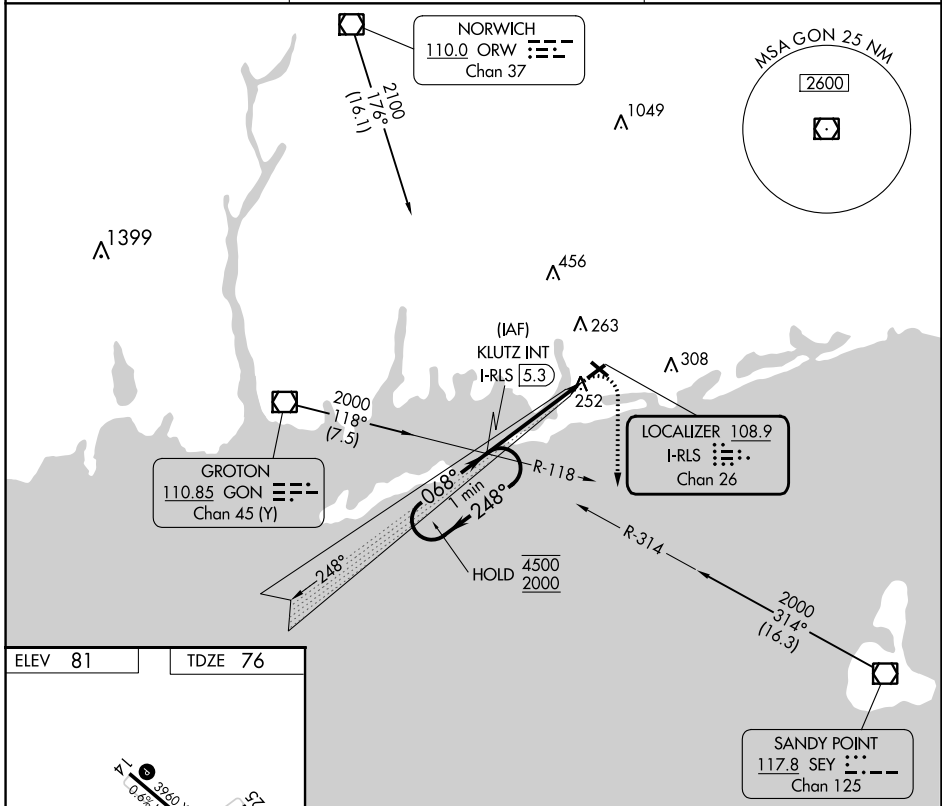


LOC/DME I-RLS <b>108.9</b> Chan 26	APP CRS <b>068°</b>	Rwy Idg TDZE Apt Elev	<b>4010</b> <b>76</b> <b>81</b>
--	------------------------	-----------------------------	---------------------------------------

**LOC RWY 7**  
WESTERLY STATE (WST)

<p>NA Circling to Rwy 14 and 32 NA at night. Rwy 7 helicopter visibility reduction below 3/4 SM NA. Inop table does not apply.</p>	<p>MALSF</p>	<p>MISSED APPROACH: Climbing right turn to 2000 on heading 180° and SEY R-314 to KLUTZ INT/I-RLS 5.3 DME and hold, continue climb-in-hold to 2000.</p>
--	--------------	--

ASOS <b>132.375</b>	PROVIDENCE APP CON * <b>119.45 319.2</b>	UNICOM <b>123.0 (CTAF) 0</b>
------------------------	---	---------------------------------



NE-1, 28 NOV 2024 to 26 DEC 2024

NE-1, 28 NOV 2024 to 26 DEC 2024