

| | | | |
|--|------------------------|-----------------------------|---|
| WAAS CH 86431 W23A | APP CRS 227° | Rwy Idg TDZE Apt Elev | 5000 429 441 |
|--|------------------------|-----------------------------|---|

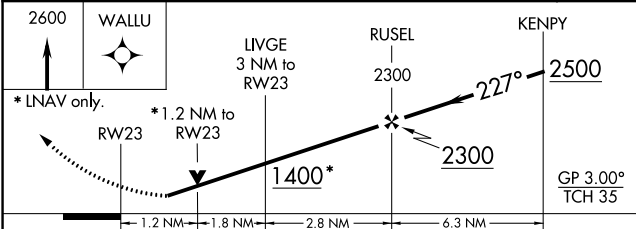
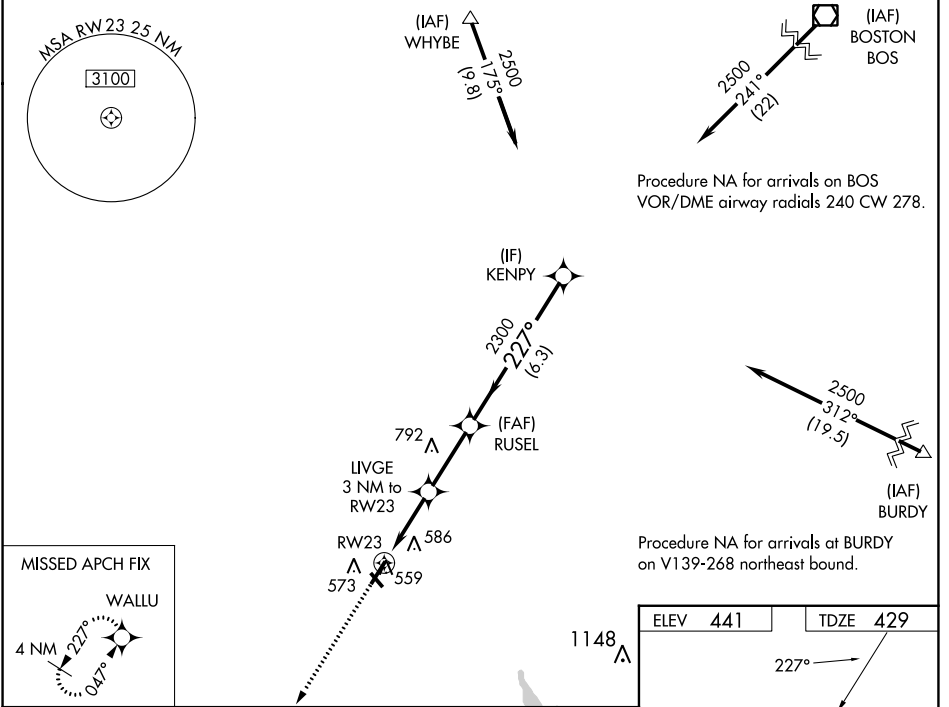
RNAV (GPS) RWY 23

NORTH CENTRAL STATE (S'F'Z)

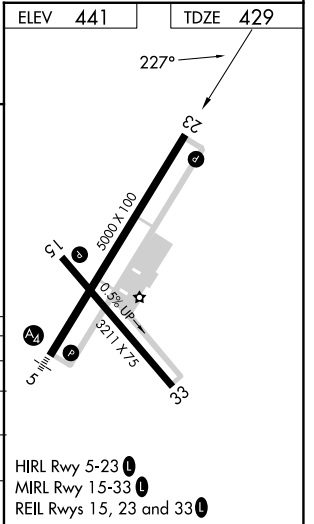
⚠ Circling Rwy 15, 33 NA at night. Baro-VNAV NA when using Providence altimeter setting. For uncompensated Baro-VNAV systems, LNAV/VNAV NA below -15°C (4°F) or above 54°C (130°F).
⚠ DME/DME RNP-0.3 NA. VDP NA with Providence altimeter setting. When local altimeter setting not received, use Providence altimeter setting and increase all DA 82 feet and all MDA 100 feet; increase LPV all Cats visibility to 1/8, LNAV/VNAV all Cats visibility to 1/4 and LNAV Cat C visibility to 3/8. Rwy 23 helicopter visibility reduction below 3/4 SM NA.

MISSED APPROACH:
Climb to 2600 direct WALLU and hold.

| | | | |
|----------------------------|--|---------------------------|-----------------------------------|
| AWOS-3PT 120.775 | PROVIDENCE APP CON ★ 123.675 244.875 | CLNC DEL 124.35 | UNICOM 123.075 (CTAF) 0 |
|----------------------------|--|---------------------------|-----------------------------------|



| CATEGORY | A | B | C | D |
|-------------------|-------------------|---------------------------|---|----|
| LPV DA | 679-7/8 | 250 (300-7/8) | | NA |
| LNAV/VNAV DA | 849-1 1/2 | 420 (500-1 1/2) | | NA |
| LNAV MDA | 820-1 391 (400-1) | 820-1 1/8 391 (400-1 1/8) | | NA |
| C CIRCLING | 900-1 459 (500-1) | 900-1 1/2 459 (500-1 1/2) | | NA |



NE-1, 28 NOV 2024 to 26 DEC 2024

NE-1, 28 NOV 2024 to 26 DEC 2024