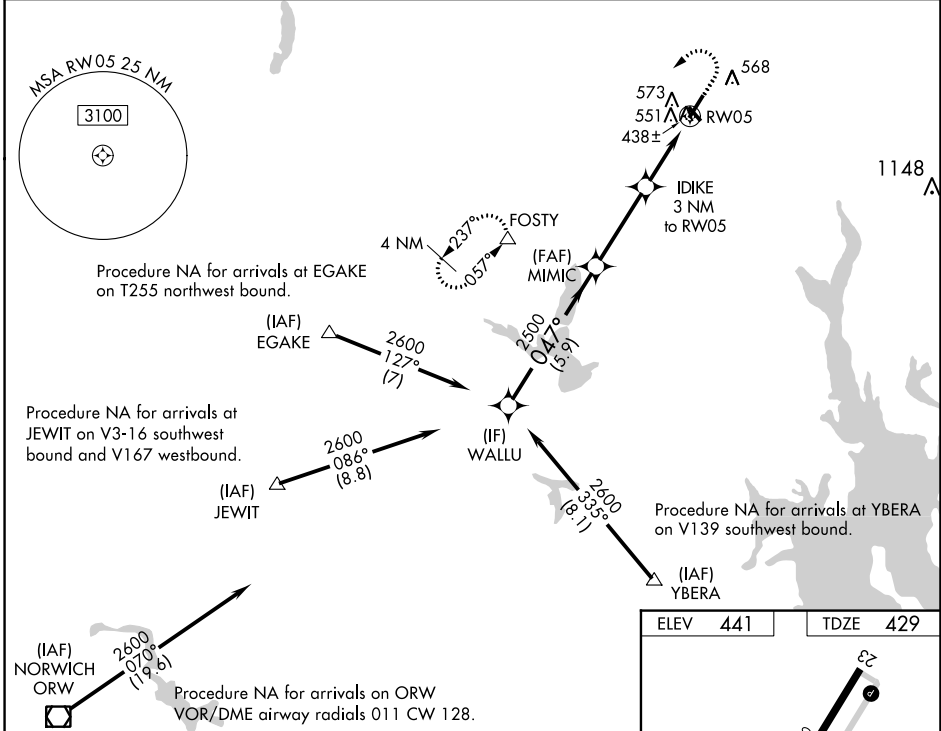


WAAS CH <b>50231</b> <b>W05A</b>	APP CRS <b>047°</b>	Rwy Idg TDZE <b>429</b> Apt Elev <b>441</b>	<b>5000</b>
----------------------------------------	------------------------	---------------------------------------------------	-------------

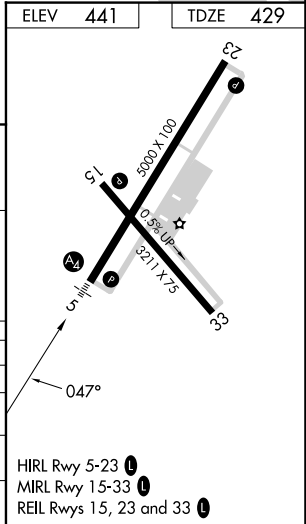
# RNAV (GPS) RWY 5

NORTH CENTRAL STATE (SFZ)

RNP APCH - GPS.		MALS	MISSED APPROACH: Climb to 2000 then climbing left turn to 2500 direct FOSTY and hold.
<p>⚠ Circling Rwy 15, 33 NA at night. For inoperative MALS, increase LPV all Cats visibility to 3/8 mile. For inop ALS, increase LPV all Cats visibility to 3/8 SM and LNAV/VNAV all Cats visibility to 1 1/8 SM. For uncompensated Baro-VNAV systems, LNAV/VNAV NA below -15°C or above 54°C.</p>			
AWOS-3PT <b>120.775</b>	PROVIDENCE APP CON * <b>123.675 244.875</b>	CLNC DEL <b>124.35</b>	UNICOM <b>123.075 (CTAF) 0</b>



WALLU		MIMIC		2000	2500	FOSTY
2600	047°	2500	IDIKE 3 NM to RW05	1.1 NM to RW05		△
GP 3.00°	2500	*1420				
TCH 52	5.9 NM	3.4 NM	1.9 NM	1.1		
CATEGORY	A	B	C	D		
LPV DA	700-3/4	271 (300-3/4)		NA		
LNAV/VNAV DA	835-1	406 (400-1)		NA		
LNAV MDA	820-3/4	391 (400-3/4)	820-7/8	391 (400-7/8)		
CIRCLING	900-1	459 (500-1)	900-1 1/2	459 (500-1 1/2)		



NE-1, 28 NOV 2024 to 26 DEC 2024

NE-1, 28 NOV 2024 to 26 DEC 2024