

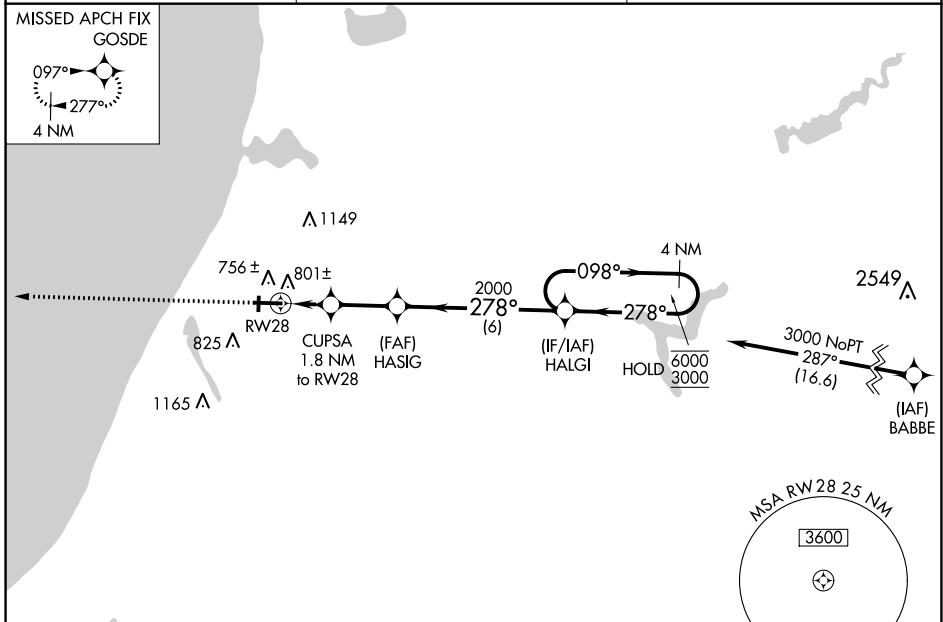
WAAS CH 42532 W28A	APP CRS 278°	Rwy Idg TDZE Apt Elev	5501 621 621
--	------------------------	-----------------------------	---

RNAV (GPS) RWY 28

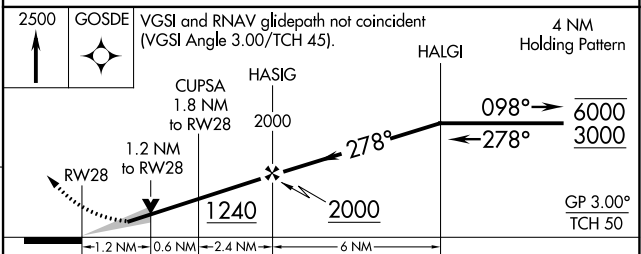
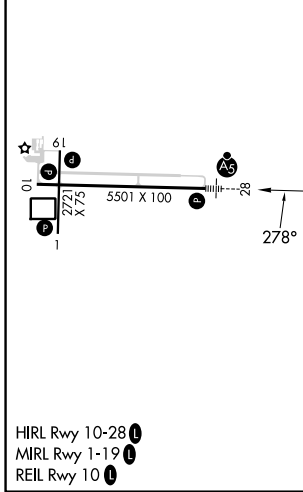
MANISTEE COUNTY/BLACKER (MBL)

RNP APCH - GPS.	MALSR	MISSED APPROACH: Climb to 2500 direct GOSDE and hold.
Circling to Rwy 1, 19 NA at night. For uncompensated Baro-VNAV systems, LNAV/VNAV NA below -16°C or above 54°C.		

AWOS-3PT 118.825	MINNEAPOLIS CENTER 120.85 322.35	UNICOM 122.8 (CTAF) 0
----------------------------	--	---------------------------------



ELEV 621	D	TDZE 621
----------	----------	----------



CATEGORY	A	B	C	D
LPV DA		821-1/2	200 (200-1/2)	
LNAV/VNAV DA		984-5/8	363 (400-5/8)	
LNAV MDA	1060-1/2	439 (500-1/2)	1060-3/4	439 (500-3/4)
CIRCLING	1160-1 539 (600-1)	1220-1 599 (600-1)	1400-2 1/4 779 (800-2 1/4)	1500-2 3/4 879 (900-2 3/4)