

APP CRS	Rwy Idg	5756
164°	TDZE	1327
	Apt Elev	1356

RNAV (GPS) RWY 16

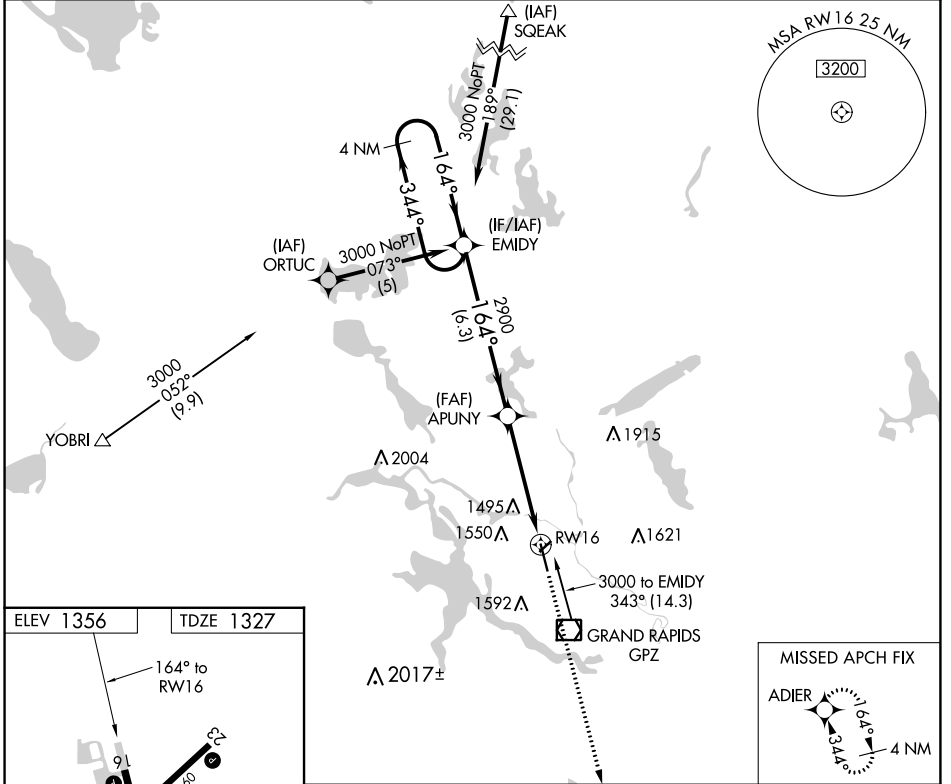
GRAND RAPIDS/ITASCA COUNTY-GORDON NEWSTROM FLD (GPZ)

RNP APCH.

⚠ Circling Rwy 5 NA at night. Circling NA for Cat D east of Rwy 16-34. When local altimeter setting not received, use Hibbing altimeter setting and increase all MDAs 80 feet; increase LNAV Cat C visibility 1/8 SM and Circling Cats C/D visibility 1/4 SM.

MISSED APPROACH: Climb to 2900 direct ADIER and hold.

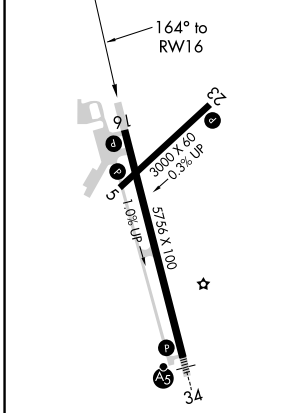
AWOS-3PT 118.425	MINNEAPOLIS CENTER 127.9 281.45	UNICOM 122.8 (CTAF) 0
----------------------------	---	---------------------------------



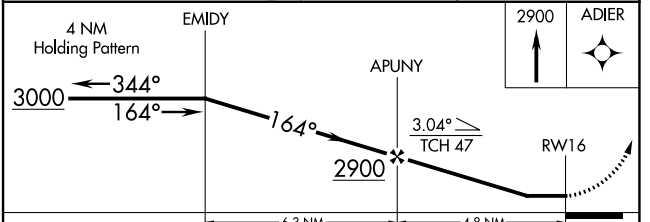
NC-1, 28 NOV 2024 to 26 DEC 2024

NC-1, 28 NOV 2024 to 26 DEC 2024

ELEV 1356	TDZE 1327
-----------	-----------



- MIRL Rwy 5-23
- HIRL Rwy 16-34
- REIL Rws 5, 16, and 23



CATEGORY	A	B	C	D
LNAV MDA	1760-1	433 (500-1)	1760-1 1/4 433 (500-1 1/4)	1760-1 1/2 433 (500-1 1/2)
C CIRCLING	1900-1	544 (600-1)	1900-1 1/2 544 (600-1 1/2)	2000-2 644 (700-2)