

WAAS CH 56505 W01A	APP CRS 004°	Rwy Idg TDZE Apt Elev	6501 760 772
--	------------------------	-----------------------------	---

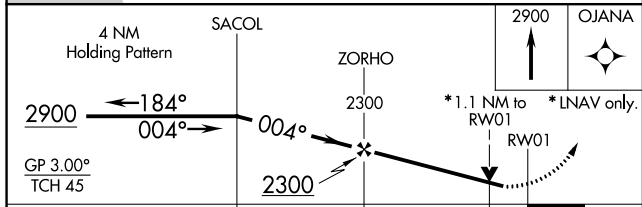
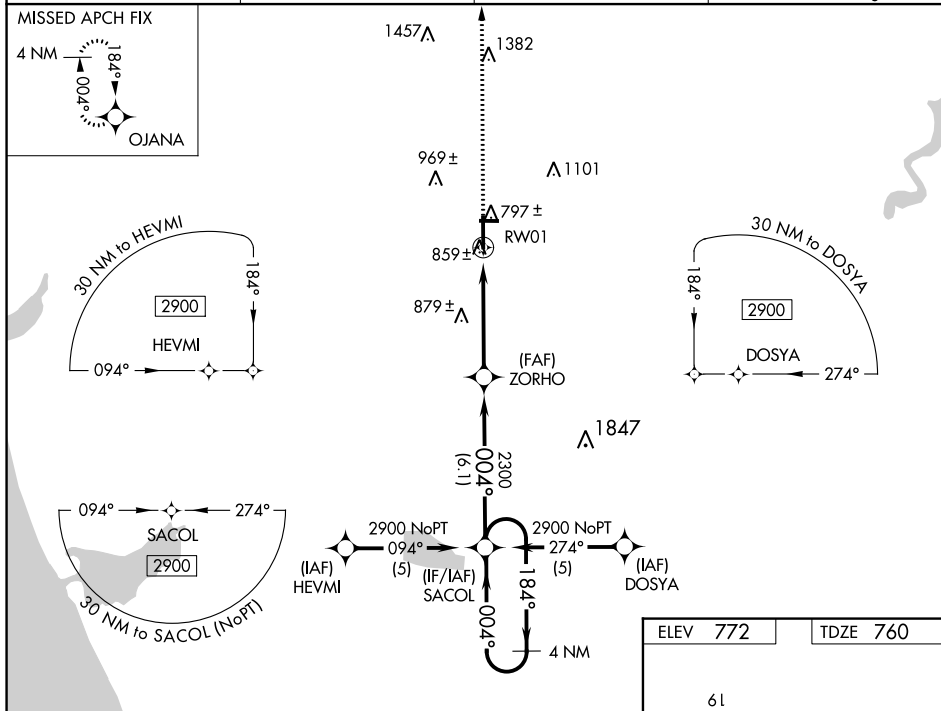
RNAV (GPS) RWY 1

FREMONT MUNI (F'FX)

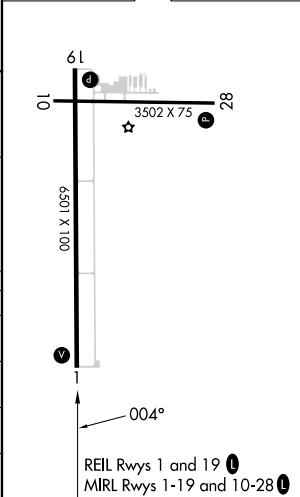
∇ Baro-VNAV NA when using Muskegon altimeter setting. For uncompensated Baro-VNAV systems, LNAV/VNAV NA below -16°C (4°F) or above 47°C (116°F). Rwy 1 helicopter visibility reduction below ¾ SM NA. DME/DME RNP-0.3 NA. When local altimeter setting not received, use Muskegon altimeter setting and increase all DA 65 feet, and all visibilities ¼ mile. Increase all MDA 80 feet, and Cat C/D visibilities ¼ mile. VDP NA when using Muskegon altimeter setting.

MISSED APPROACH:
Climb to 2900 direct OJANA and hold.

AWOS-3 118.775	GREAT LAKES APP CON * 119.8 290.35	CLNC DEL 118.25	UNICOM 123.0 (CTAF) 0
--------------------------	--	---------------------------	---------------------------------



ELEV	772	TDZE	760
------	-----	------	-----



CATEGORY	A	B	C	D
LPV DA		1036-1	276 (300-1)	
LNAV/VNAV DA		1129-1¼	369 (400-1¼)	
LNAV MDA	1140-1	380 (400-1)		1140-1¼ 380 (400-1¼)
CIRCLING	1260-1	488 (500-1)	1460-2 688 (700-2)	1460-2¼ 688 (700-2¼)