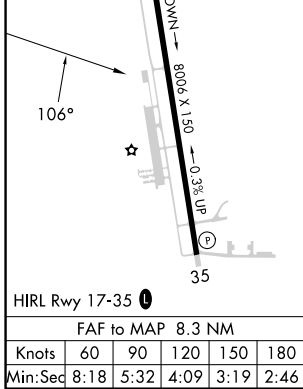
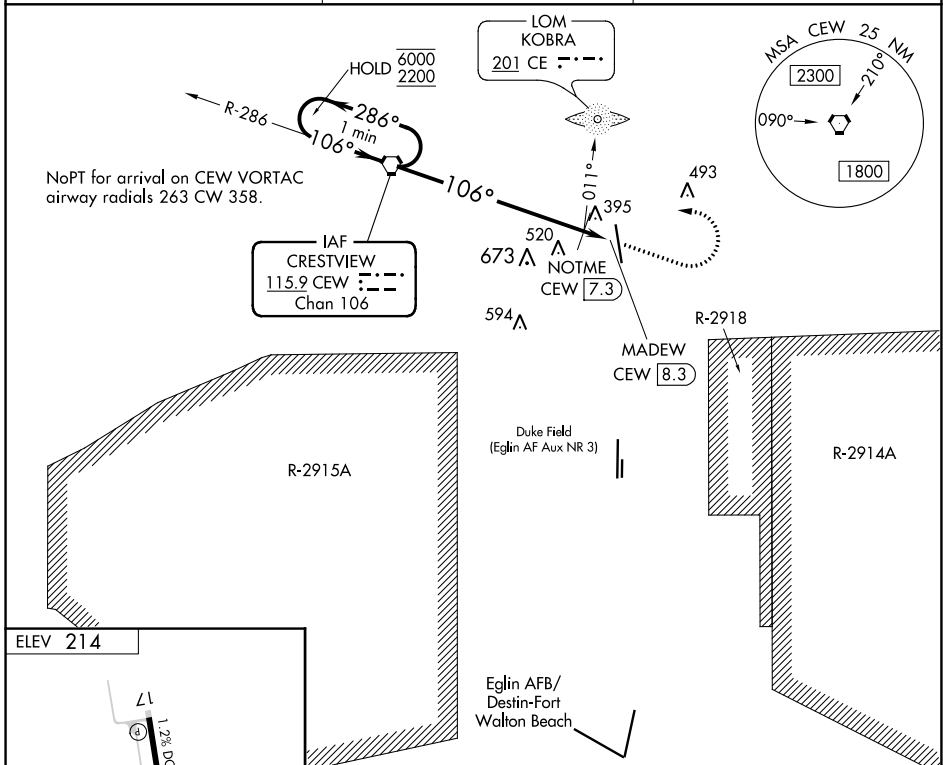


VORTAC CEW <b>115.9</b> Chan <b>106</b>	APP CRS <b>106°</b>	Rwy ldg TDZE Apt Elev <b>N/A</b> <b>N/A</b> <b>214</b>
---	------------------------	--

**VOR-A**  
BOB SIKES(CEW)

<p><b>⚠</b> Circling NA for Cat D west of Rwy 17-35. When local altimeter setting not received, use Eglin AFB altimeter setting and increase all MDA 60 feet and increase Circling Cat C/D visibility ¼ SM.</p>	<p>MISSED APPROACH: Climb to 1200 then climbing left turn to 2200 direct CEW VORTAC and hold.</p>	
<p>ASOS <b>119.275</b></p>	<p>EGLIN APP CON <b>124.05 284.65</b></p>	<p>UNICOM <b>122.95 (CTAF)</b></p>



One Minute Holding Pattern	CEW VORTAC	1200	2200	CEW
6000 ← 286°	→ 106°	NOTME CEW 7.3	MADEW CEW 8.3	
* 960 when using Eglin AFB altimeter setting.		* 900		
		7.3 NM   1 NM		
CATEGORY	A	B	C	D
<b>C</b> CIRCLING	900-1 686 (700-1)		900-2 686 (700-2)	900-2½ 686 (700-2½)
NOTME FIX MINIMUMS (ADF OR DME REQUIRED)				
<b>C</b> CIRCLING	700-1 486 (500-1)		820-1¾ 606 (700-1¾)	840-2 626 (700-2)

FAF to MAP 8.3 NM

Knots	60	90	120	150	180
Min:Sec	8:18	5:32	4:09	3:19	2:46

SE-3, 28 NOV 2024 to 26 DEC 2024

SE-3, 28 NOV 2024 to 26 DEC 2024