

WAAS CH <b>61005</b> <b>W21A</b>	APP CRS <b>207°</b>	Rwy ldg TDZE <b>5008</b> <b>980</b> Apt Elev <b>996</b>
----------------------------------------	------------------------	---------------------------------------------------------------------

# RNAV (GPS) RWY 21

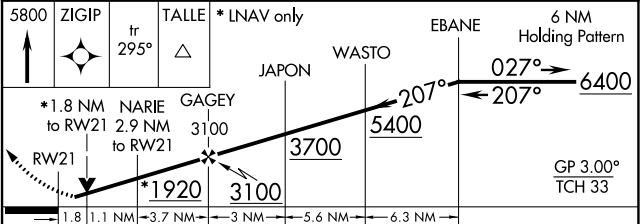
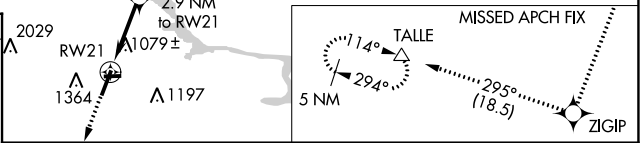
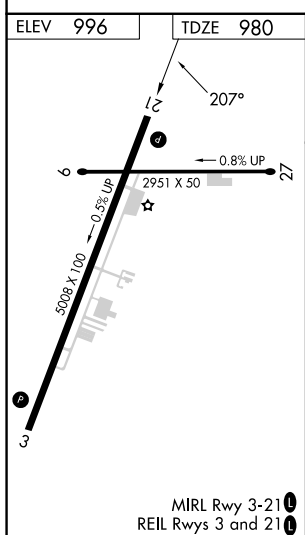
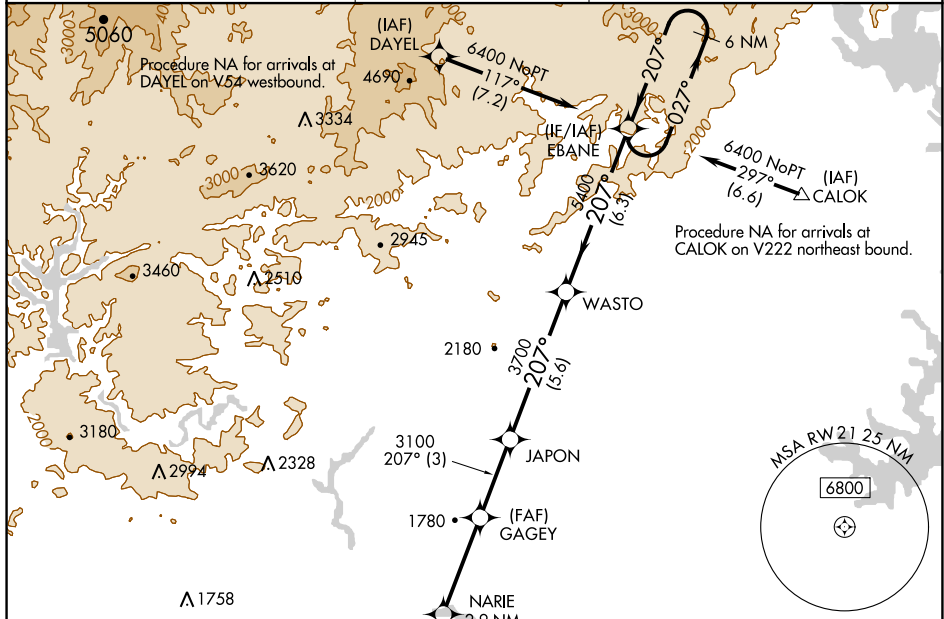
TOCCOA RG LETOURNEAU FLD (TOC)

**RNP APCH**

Baro-VNAV and VDP NA when using Gainesville altimeter setting. For uncompensated Baro-VNAV systems, LNAV/VNAV NA below -8°C or above 54°C. When local altimeter setting not received, use Gainesville altimeter setting: Increase LPV DA to 1345 feet, LNAV/VNAV DA to 1510 feet, and increase all MDAs 120 feet, increase LNAV/LNAV visibility all Cats ½ SM, LNAV visibility Cats C/D ¾ SM and Circling visibility Cats A/B ½ SM and Cat C ½ SM. Circling Rwy 9, 27 NA at night.

**MISSED APPROACH:**  
Climb to 5800 direct ZIGIP and on track 295° to TALLE and hold, continue climb-in-hold to 5800.

AWOS-3 <b>119.625</b>	ATLANTA CENTER <b>134.8 379.95</b>	UNICOM <b>122.8 (CTAF) 0</b>
--------------------------	---------------------------------------	---------------------------------



CATEGORY	A	B	C	D
LPV DA		1230-1	250 (300-1)	
LNAV/VNAV DA		1395-1½	415 (400-1½)	
LNAV MDA	1560-1	580 (600-1)	1560-1½	580 (600-1½)
<b>CIRCLING</b>	1720-1	724 (800-1)	1760-2¼ 764 (800-2¼)	2480-3 1484 (1500-3)

SE-4, 28 NOV 2024 to 26 DEC 2024

SE-4, 28 NOV 2024 to 26 DEC 2024