

WAAS CH <b>65705</b> <b>W03A</b>	APP CRS <b>027°</b>	Rwy ldg TDZE <b>5008</b> <b>996</b> Apt Elev <b>996</b>
--	------------------------	--

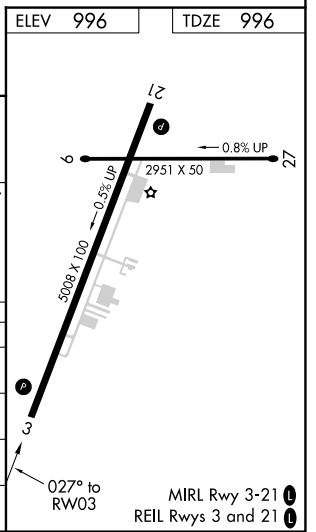
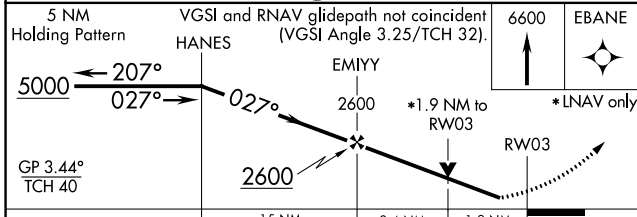
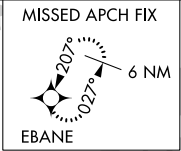
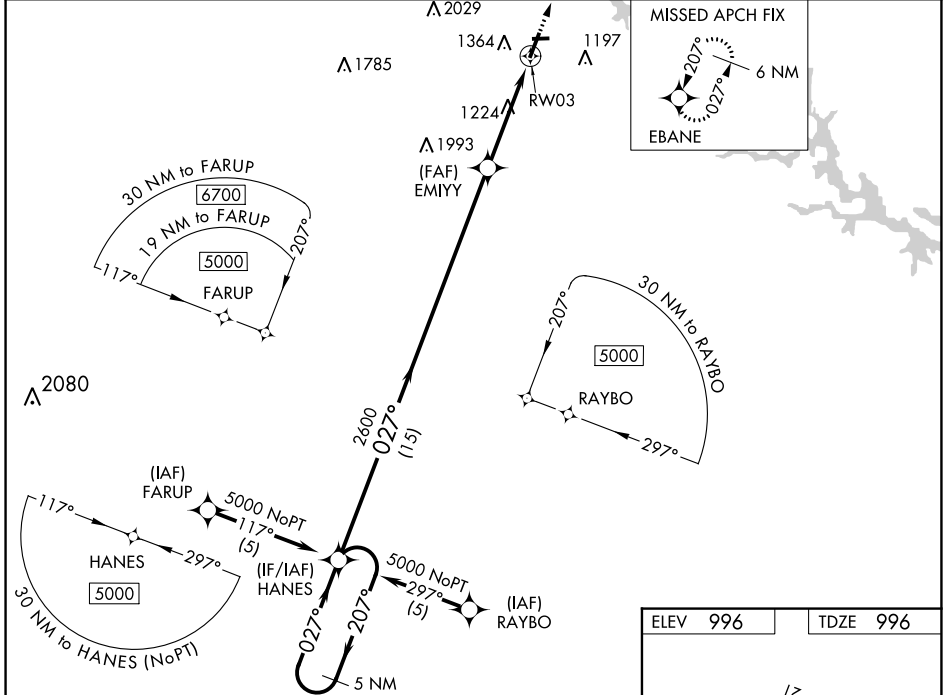
# RNAV (GPS) RWY 3

TOCCOA RG LETOURNEAU FLD (TOC)

**NA** Baro-VNAV and VDP NA when using Gainesville altimeter setting. For uncompensated Baro-VNAV systems, LNAV/VNAV NA below -8°C (18°F) or above 54°C (130°F). DME/DME RNP-0.3 NA. When local altimeter setting not received, use Gainesville altimeter setting and increase LPV DA to 1507 feet, LNAV/VNAV DA to 1859 and all MDA 120 feet. Increase LPV all Cats visibility  $\frac{3}{8}$  mile, increase LNAV Cat B visibility  $\frac{1}{4}$  mile, Cats C/D  $\frac{1}{2}$  mile and Circling Cats A/B/C visibility  $\frac{1}{4}$  mile. Helicopter visibility reduction below  $\frac{3}{4}$  SM NA.

**MISSED APPROACH:** Climb to 6600 direct EBANE and hold, continue climb-in-hold to 6600.

AWOS-3 <b>119.625</b>	ATLANTA CENTER <b>134.8 379.95</b>	UNICOM <b>122.8 (CTAF)</b>
--------------------------	---------------------------------------	-------------------------------



CATEGORY	A	B	C	D
LPV DA	1392-1 $\frac{1}{8}$ 396 (400-1 $\frac{1}{8}$ )			NA
LNAV/VNAV DA	1744-2 $\frac{1}{2}$ 748 (800-2 $\frac{1}{2}$ )			NA
LNAV MDA	1680-1 684 (700-1)		1680-2 684 (700-2)	
<b>C</b> CIRCLING	1720-1 724 (800-1)		1760-2 $\frac{1}{4}$ 764 (800-2 $\frac{1}{4}$ )	2480-3 1484 (1500-3)

SE-4, 28 NOV 2024 to 26 DEC 2024

SE-4, 28 NOV 2024 to 26 DEC 2024