

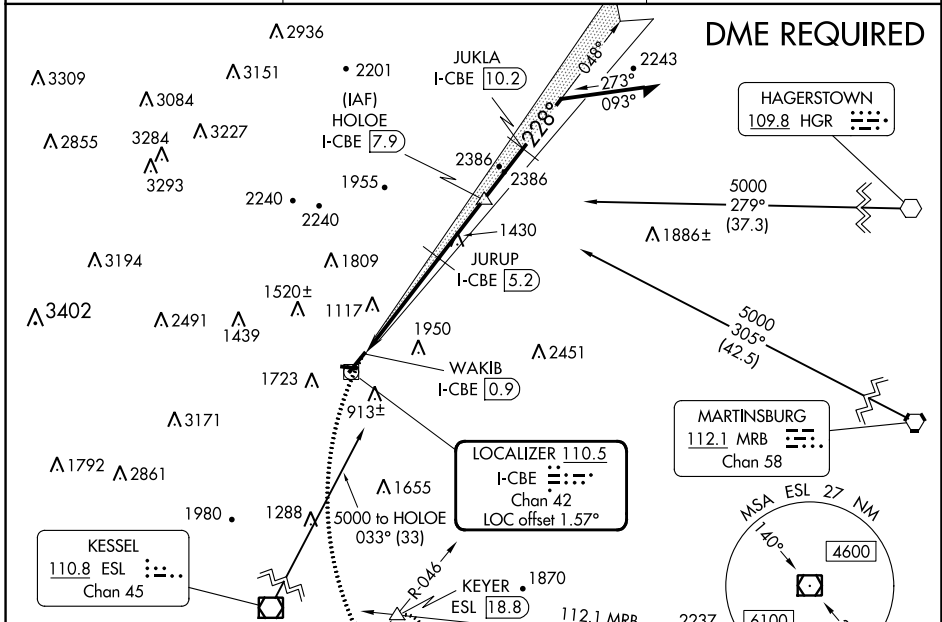
LOC/DME I-CBE 110.5 Chan 42	APP CRS 228°	Rwy Idg TDZE 5047 775	Apt Elev 775
---	------------------------	---	------------------------

LOC/DME RWY 23
GREATER CUMBERLAND RGNL (CBE)

⚠ When local altimeter setting not received, use Winchester altimeter setting and increase all MDA 100 feet, increase S-23 Cat B visibility ¼ mile, Cats C and D ½ mile. Night landing: Rwy 5, 11, 29 NA. Circling NA northwest of Rwy 5/23. Helicopter visibility reduction below ¾ SM NA.

⚠ MISSED APPROACH: Climbing left turn to 5000 on heading 175° and on ESL VOR/DME R-046 to KEYER/ESL 18.8 DME and hold, continue climb-in-hold to 5000.

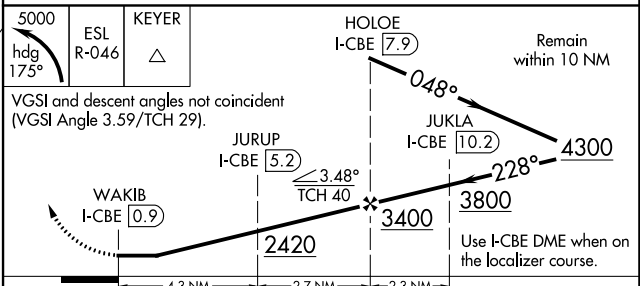
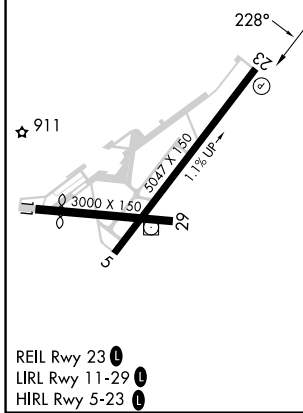
AWOS-3 128.625	JOHNSTOWN APP CON ★ 121.2 299.2	UNICOM 122.8 (CTAF) 0
--------------------------	---	---------------------------------



NE-3, 28 NOV 2024 to 26 DEC 2024

NE-3, 28 NOV 2024 to 26 DEC 2024

ELEV 775	TDZE 775
-----------------	-----------------



CATEGORY	A	B	C	D
S-23	1680-1¼	905 (1000-1¼)	1680-2½	905 (1000-2½)
C CIRCLING	1680-1¼ 905 (1000-1¼)	2140-1½ 1365 (1400-1½)	2260-3 1485 (1500-3)	2360-3 1585 (1600-3)