

WAAS CH <b>99336</b> <b>W05A</b>	APP CRS <b>029°</b>	Rwy Idg TDZE Apt Elev	<b>5047</b> <b>746</b> <b>775</b>
--	------------------------	-----------------------------	---

# RNAV (GPS) RWY 5

GREATER CUMBERLAND RGNL (CBE)

RNP APCH.

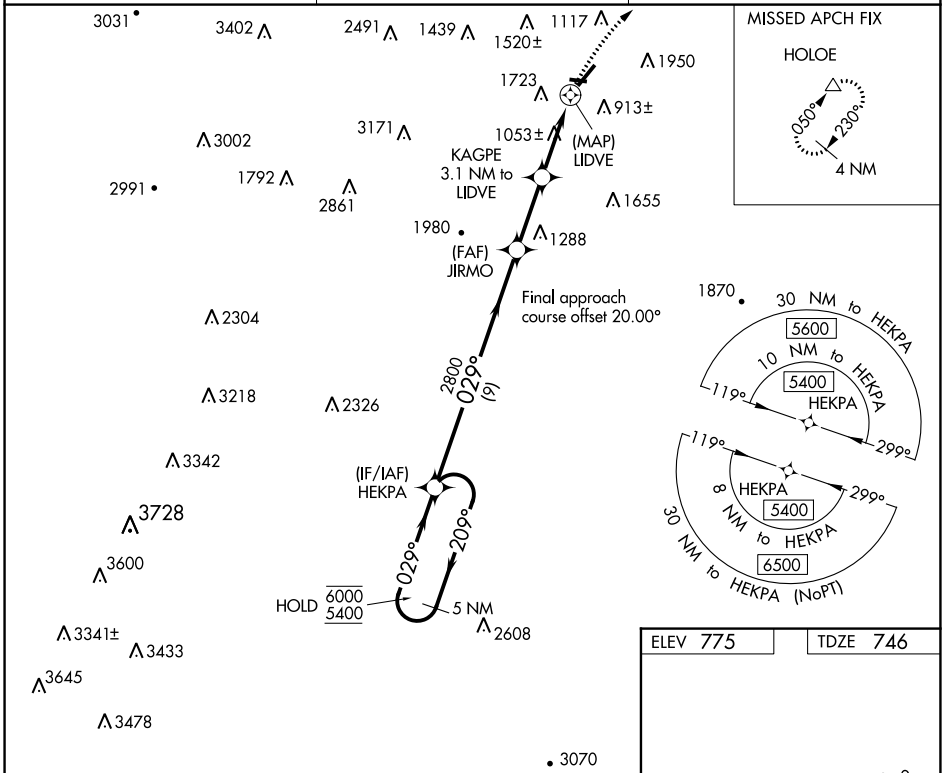
**⚠** Circling NA northwest of Rwy 5-23. Rwy 5 helicopter visibility reduction below 1 SM NA. Straight-in Rwy 5 NA at night, Circling Rwy 5, 29 NA at night.  
**❄** -15°C

MISSED APPROACH: Climbing right turn to 4500 direct HOLOE and hold, continue climb-in-hold to 4500.

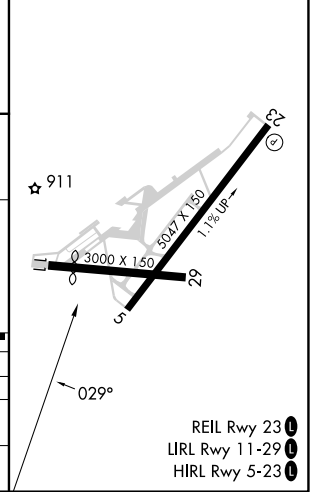
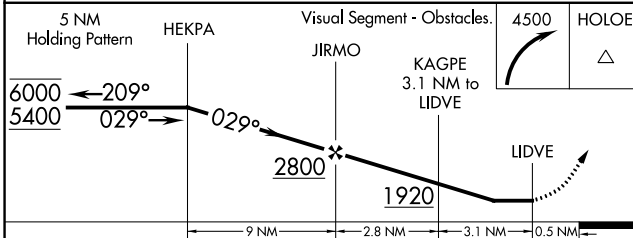
AWOS-3  
**128.625**

JOHNSTOWN APP CON ★  
**121.2 299.2**

UNICOM  
**122.8 (CTAF) 0**



ELEV 775	TDZE 746
----------	----------



CATEGORY	A	B	C	D
LP MDA	1420-1	674 (700-1)	1420-1 $\frac{7}{8}$	674 (700-1 $\frac{7}{8}$ )
LNAV MDA	1820-1 $\frac{1}{4}$ 1074 (1100-1 $\frac{1}{4}$ )	1820-1 $\frac{1}{2}$ 1074 (1100-1 $\frac{1}{2}$ )	1820-3	1074 (1100-3)
<b>C</b> CIRCLING	1820-1 $\frac{1}{4}$ 1045 (1100-1 $\frac{1}{4}$ )	2140-1 $\frac{1}{2}$ 1365 (1400-1 $\frac{1}{2}$ )	2260-3 1485 (1500-3)	2340-3 1565 (1600-3)

- REIL Rwy 23 0
- LRL Rwy 11-29 0
- HIRL Rwy 5-23 0

NE-3, 28 NOV 2024 to 26 DEC 2024

NE-3, 28 NOV 2024 to 26 DEC 2024