

APP CRS	Rwy Idg	<b>5006</b>
<b>216°</b>	TDZE	<b>370</b>
	Apt Elev	<b>370</b>

# RNAV (GPS) RWY 22

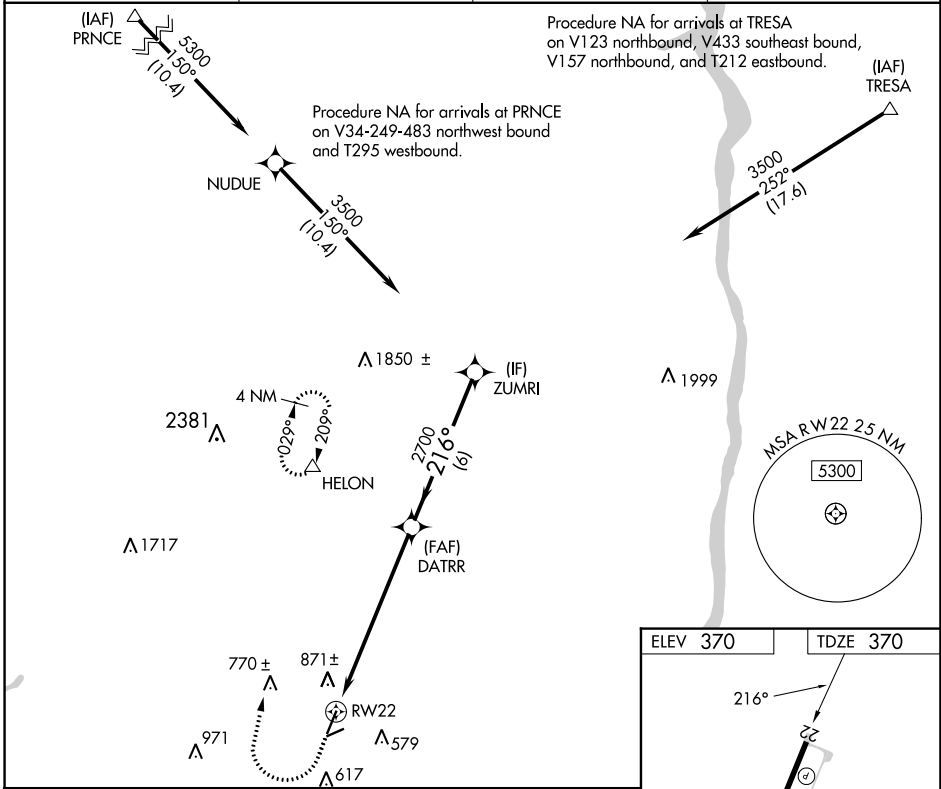
ORANGE COUNTY (MGJ)

RNP APCH.

**▼** Rwy 22 helicopter visibility reduction below 1 SM NA.  
**▲** Straight-in Rwy 22 NA at night, Circling Rwy 8, 22, 26 NA at night.

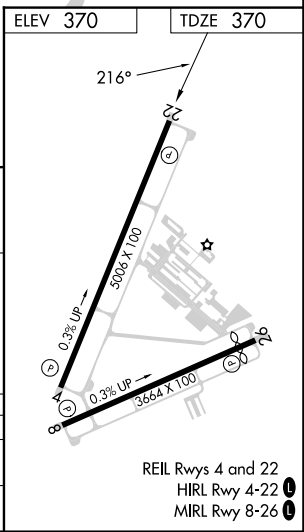
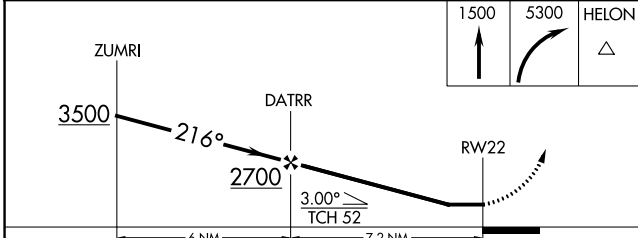
MISSED APPROACH: Climb to 1500 then climbing right turn to 5300 direct HELON and hold, continue climb-in-hold to 5300.

ASOS <b>119.275</b>	NEW YORK APP CON <b>132.75 363.1</b>	CLNC DEL <b>123.85</b>	AUNICOM <b>122.725 (CTAF) 0</b>
------------------------	---	---------------------------	------------------------------------



NE-2, 28 NOV 2024 to 26 DEC 2024

NE-2, 28 NOV 2024 to 26 DEC 2024



CATEGORY	A	B	C	D
LNVA MDA	1140-1 770 (800-1)	1140-1¼ 770 (800-1¼)	1140-2½	770 (800-2½)
<b>C</b> CIRCLING	1180-1 810 (900-1)	1180-1¼ 810 (900-1¼)	1180-2½ 810 (900-2½)	1220-2¾ 850 (900-2¾)

REIL Rwy 4 and 22  
 HIRL Rwy 4-22  
 MIRL Rwy 8-26