

LOC I-JBR <b>110.15</b>	APP CRS <b>230°</b>	Rwy Idg TDZE Apt Elev	<b>6200</b> <b>262</b> <b>262</b>
----------------------------	------------------------	-----------------------------	-----------------------------------------

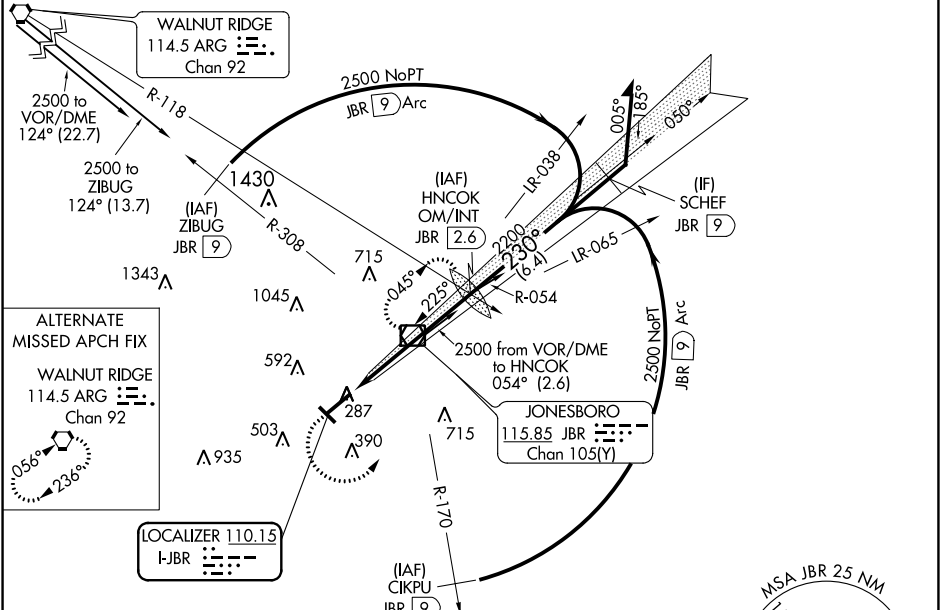
# ILS or LOC RWY 23

JONESBORO MUNI (JBR)

**⚠** Circling NA northwest of Rwy 5-23. Rwy 23 helicopter visibility reduction below 3/4 SM NA. When local altimeter not received, use Walnut Ridge altimeter setting; increase DA to 600 feet and all visibilities 1/2 SM; increase all MDAs 60 feet, S-LOC 23 Cat C/D visibility 1/2 SM and Circling Cat C 1/4 SM. For inop ALS, increase S-ILS 23 Cat A/B visibility to 1/2 SM and S-LOC 23 Cat C/D to 1 3/8 SM. For inop ALS when using Walnut Ridge altimeter setting, increase S-ILS 23 Cat A/B visibility to 1 SM. When using Walnut Ridge altimeter setting, inop table does not apply to S-LOC 23 Cats C/D. Circling Rwy 31 NA at night.

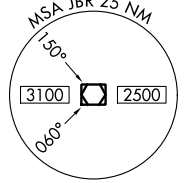
**ODALS**  
**MISSED APPROACH:**  
Climb to 2000 then climbing left turn to 2300 direct JBR VOR/DME and hold.

ASOS <b>118.525</b>	MEMPHIS CENTER <b>120.075 289.4</b>	UNICOM <b>123.0 (CTAF)</b>
------------------------	----------------------------------------	-------------------------------

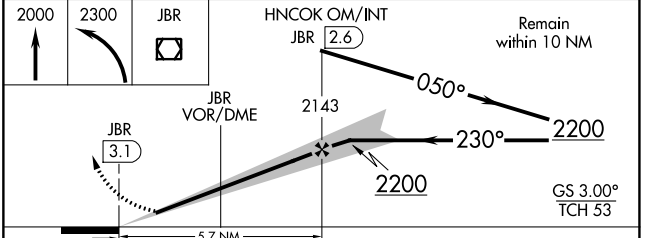
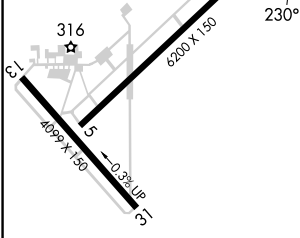


**ALTERNATE MISSED APCH FIX**  
WALNUT RIDGE  
114.5 ARG  
Chan 92

**LOCALIZER 110.15**  
I-JBR



ELEV 262	TDZE 262
----------	----------



MIRL Rwys 5-23 and 13-31	FAF to MAP 5.7 NM				
Knots	60	90	120	150	180
Min:Sec	5:42	3:48	2:51	2:17	1:54
CATEGORY	A	B	C	D	
S-ILS 23	546-3/4		284 (300-3/4)		
S-LOC 23	720-3/4 458 (500-3/4)		720-1 458 (500-1 1/4)		
CIRCLING	740-1 478 (500-1)		820-1 1/2 1080-2 3/4 558 (600-1 1/2) 818 (900-2 3/4)		

SC-1, 28 NOV 2024 to 26 DEC 2024

SC-1, 28 NOV 2024 to 26 DEC 2024