

WAAS CH 86401 W27A	APP CRS 274°	Rwy Idg 6355 TDZE 881 Apt Elev 881
--	------------------------	---

RNAV (GPS) RWY 27

DE KALB COUNTY (GWB)

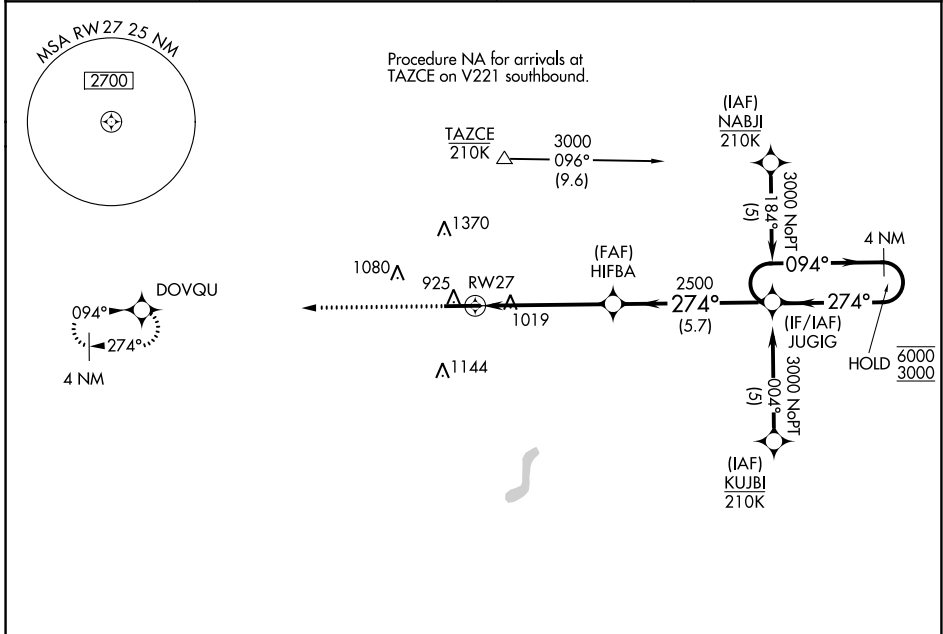
RNP APCH - GPS.

⚠ For uncompensated Baro-VNAV systems, LNAV/VNAV NA below -16°C or above 54°C.



MISSED APPROACH:
Climb to 3000 direct
DOVQU and hold.

AWOS-3P 124.15	FORT WAYNE APP CON 127.2 284.6	CLNC DEL 126.6	UNICOM 123.0 (CTAF)
--------------------------	--	--------------------------	-------------------------------



EC-2, 28 NOV 2024 to 26 DEC 2024

EC-2, 28 NOV 2024 to 26 DEC 2024

ELEV 881	TDZE 881	1648
----------	----------	------

3000 DOVQU

HIFBA 2500

JUGIG 2500

4 NM Holding Pattern

094° → 6000
← 274° 3000

1.2 NM to RW27

1.2 3.7 NM 5.7 NM

GP 3.00°
TCH 47

CATEGORY	A	B	C	D
LPV DA	1081-1/2 200 (200-1/2)			
LNAV/ VNAV DA	1314-3/4 433 (500-3/4)			
LNAV MDA	1320-1/2 439 (500-1/2)	1320-3/4 439 (500-3/4)		
C CIRCLING	1320-1 439 (500-1)	1560-1 679 (700-1)	1720-2 1/2 839 (900-2 1/2)	1720-2 3/4 839 (900-2 3/4)

REIL Rwy 9 and 27
MIRL Rwy 9-27