

WAAS CH 86499	APP CRS 132°	Rwy Idg TDZE 1002	6000
W13A		Apt Elev 1002	

RNAV (GPS) RWY 13

DEL RIO INTL (DRT)

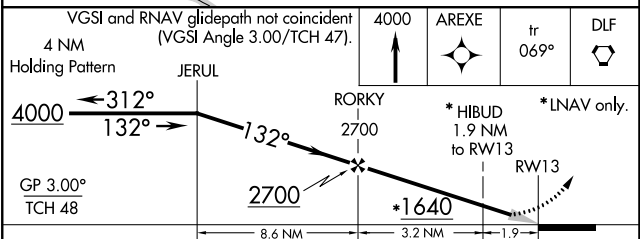
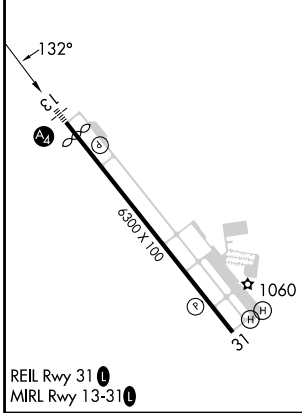
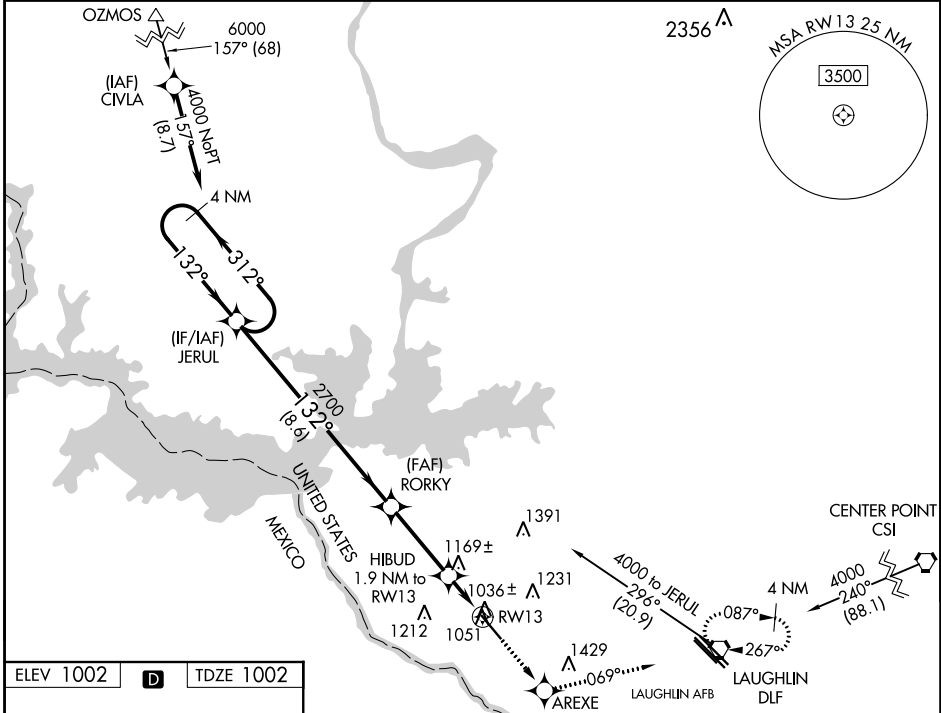
RNP APCH.

MAIS

MISSED APPROACH: Climb to 4000 direct AREXE and on 069° track to DLF VORTAC and hold, continue climb-in-hold to 4000.

⚠ Circling NA for Cat D southwest of Rwy 13-31. When local altimeter setting not received, use Laughlin AFB altimeter setting and increase all DA 30 feet and all MDA 40 feet, increase LPV visibility all Cats, LNAV Cats C and D and Circling Cats C and D visibility 1/4 SM. Baro-VNAV NA when using Laughlin AFB altimeter setting. For uncompensated Baro-VNAV systems, LNAV/VNAV NA below -17° C (2°F) or above 47°C (116°F).

ASOS 118.525	DEL RIO APP CON * 119.6 259.1	CLNC DEL 120.5	UNICOM 122.8 (CTAF)
------------------------	---	--------------------------	-------------------------------



CATEGORY	A	B	C	D
LPV DA		1252-3/4	250 (300-3/4)	
LNAV/VNAV DA		1401-1	399 (400-1)	
LNAV MDA	1500-1/2 498 (500-1/2)		1500-3/4 498 (500-3/4)	1500-1 498 (500-1)
CIRCLING	1500-1 498 (500-1)	1560-1 558 (600-1)	1740-2 738 (800-2)	1740-2 1/4 738 (800-2 1/4)

SC-3, 28 NOV 2024 to 26 DEC 2024

SC-3, 28 NOV 2024 to 26 DEC 2024