

WAAS CH <b>93275</b> <b>W26A</b>	APP CRS <b>259°</b>	Rwy Idg TDZE <b>456</b> Apt Elev <b>457</b>	<b>3687</b> <b>456</b> <b>457</b>
--	------------------------	---	---

# RNAV (GPS) RWY 26

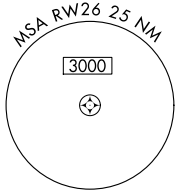
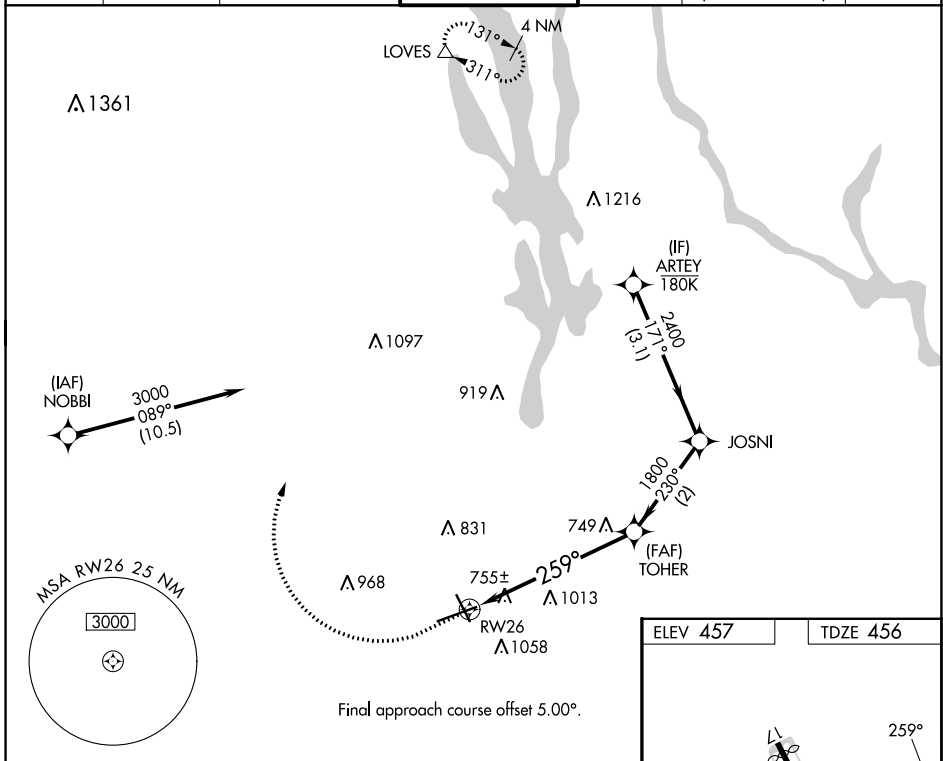
DANBURY MUNI (DXR)

RNP APCH - GPS.

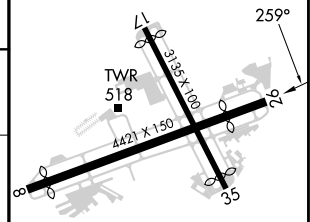
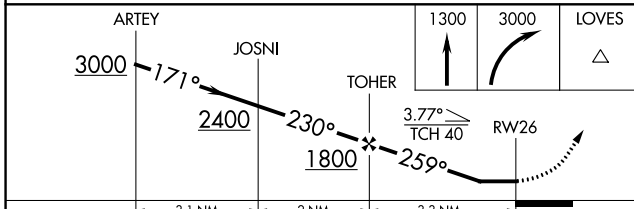
**⚠** When local altimeter setting not received, use White Plains altimeter setting and increase all MDAs 60 feet and LNAV visibility Cat A ¼ SM and LP visibility Cat C ½ SM and Circling visibility Cat C ¼ SM. Procedure NA at night. Helicopter visibility reduction below 1 SM NA. Circling NA south of Rwy 8-26.

**MISSED APPROACH:** Climb to 1300 then climbing right turn to 3000 direct LOVES and hold.

ATIS <b>127.75</b>	HPN ASOS <b>133.8</b>	NEW YORK APP CON <b>126.4 257.65</b>	DANBURY TOWER * <b>119.4</b> (CTAF)	GND CON <b>121.6</b>	CLNC DEL <b>128.6</b> (When twr closed)	UNICOM <b>122.95</b>
-----------------------	--------------------------	---	--	-------------------------	---	-------------------------



ELEV 457	TDZE 456
----------	----------



	3.1 NM	2 NM	3.3 NM	
CATEGORY	A	B	C	D
LP MDA	1020-1	564 (600-1)	1020-1½ 564 (600-1½)	NA
LNAV MDA	1280-1 824 (900-1)	1280-1¼ 824 (900-1¼)	1280-2½ 824 (900-2½)	NA
CIRCLING	1280-1¼	823 (900-1¼)	1300-2½ 843 (900-2½)	NA

REIL Rwy 8 and 26  
MIRL Rwy 8-26

NE-1, 28 NOV 2024 to 26 DEC 2024

NE-1, 28 NOV 2024 to 26 DEC 2024