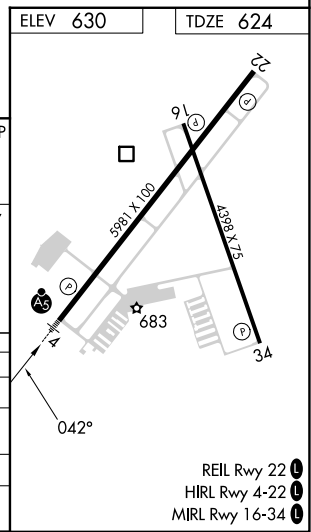
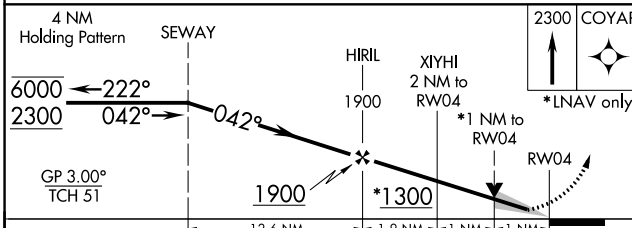
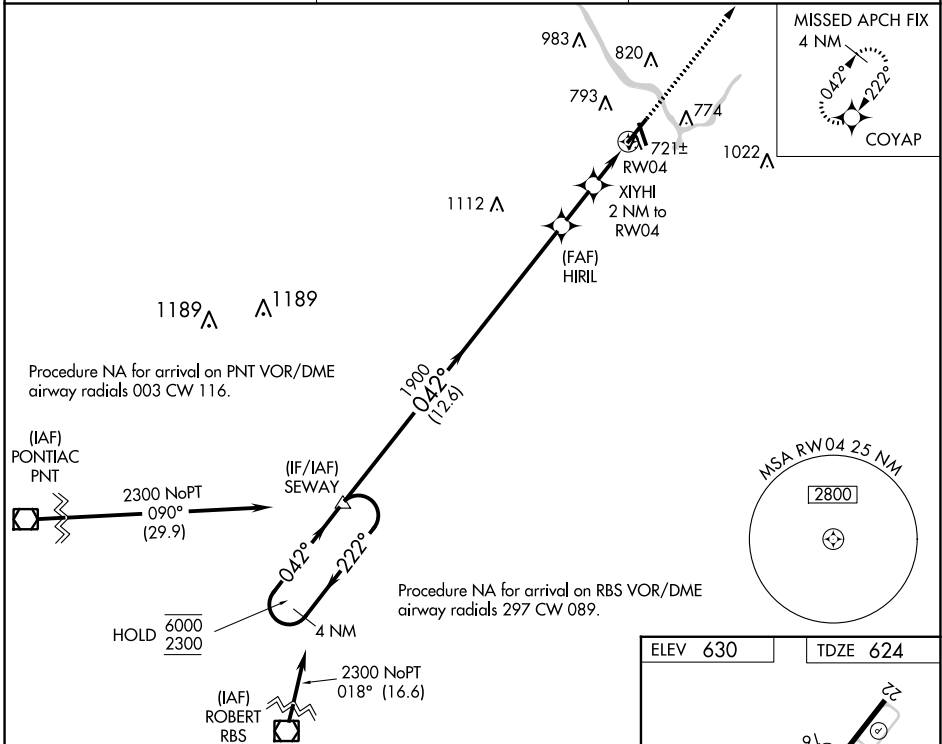


WAAS CH 42799 W04A	APP CRS 042°	Rwy Idg TDZE Apt Elev	5981 624 630
--	------------------------	-----------------------------	---

RNAV (GPS) RWY 4

GREATER KANKAKEE (IKK)

RNP APCH.		MALSR	MISSED APPROACH: Climb to 2300 direct COYAP and hold.
<p>⚠ Circling Rwy 16, 34 NA at night. For uncompensated Baro-VNAV systems, LNAV/VNAV NA below -16°C or above 54°C. For inop ALS, increase LNAV/VNAV all Cats visibility to ½ SM and LNAV Cats C/D visibility to 1 SM.</p>			
AWOS-3 128.475	CHICAGO CENTER 132.5 284.7	UNICOM 123.0 (CTAF) 0	



CATEGORY	A	B	C	D
LPV DA		824-½	200 (200-½)	
LNAV/VNAV DA		904-½	280 (300-½)	
LNAV MDA	980-½	356 (400-½)	980-⅝	356 (400-⅝)
CIRCLING	1080-1 450 (500-1)	1100-1 470 (500-1)	1140-1½ 510 (600-1½)	1340-2¼ 710 (800-2¼)

- REIL Rwy 22 0
- HIRL Rwy 4-22 0
- MIRL Rwy 16-34 0

EC-3, 28 NOV 2024 to 26 DEC 2024

EC-3, 28 NOV 2024 to 26 DEC 2024