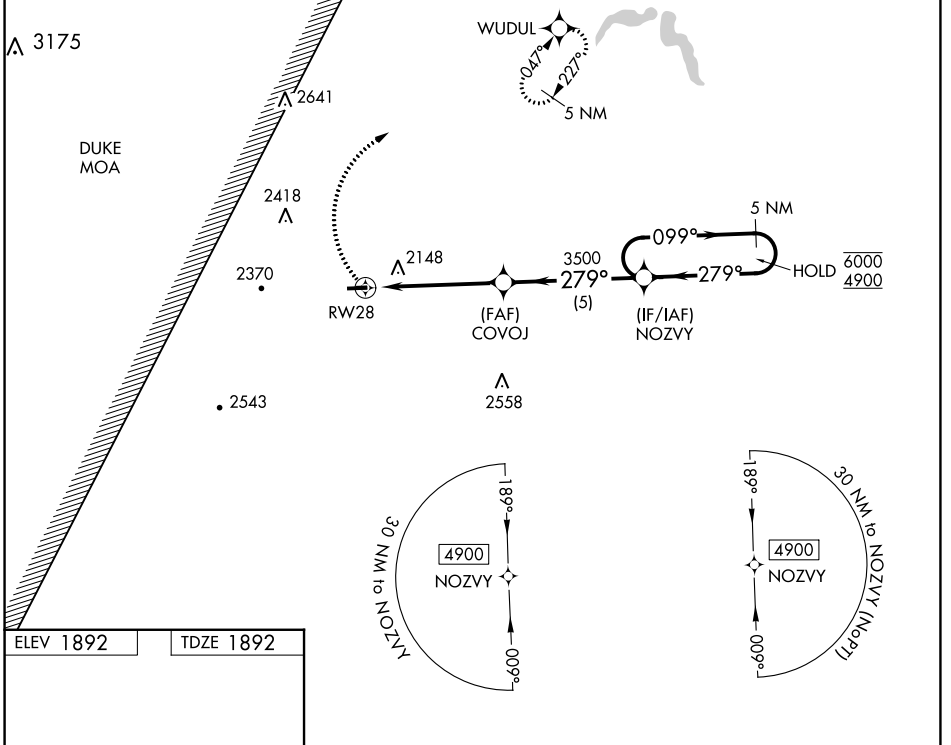


WAAS CH 99530 W28A	APP CRS 279°	Rwy Idg TDZE Apt Elev	3597 1892 1892
--	------------------------	-----------------------------	---

RNAV (GPS) RWY 28

GRAND CANYON RGNL (N38)

RNP APCH.	<p>⚠ Circling NA to Rwy 11 and 29. Procedure NA at night. Rwy 28 helicopter visibility reduction below 1 SM NA.</p>	MISSED APPROACH: Climbing right turn to 4500 direct WUDUL and hold.
AWOS-3PT 120.925	ELMIRA APP CON ★ 128.425 257.8	UNICOM 122.8 (CTAF) 0



ELEV 1892	TDZE 1892
MIRL Rwy 10-28 0	REL Rwy 28 0

4500	WUDUL	Visual Segment - Obstacles.	NOZVY	5 NM Holding Pattern
CATEGORY	A	B	C	D
LP MDA	2300-1	408 (500-1)	2300-1 1/8 408 (500-1 1/8)	NA
LNAV MDA	2420-1	528 (600-1)	2420-1 1/2 528 (600-1 1/2)	NA
C CIRCLING	2680-1	788 (800-1)	2740-2 1/2 848 (900-2 1/2)	NA

NE-4, 28 NOV 2024 to 26 DEC 2024

NE-4, 28 NOV 2024 to 26 DEC 2024