

APP CRS	Rwy Idg	3999
176°	TDZE	777
	Apt Elev	778

RNAV (GPS) RWY 18

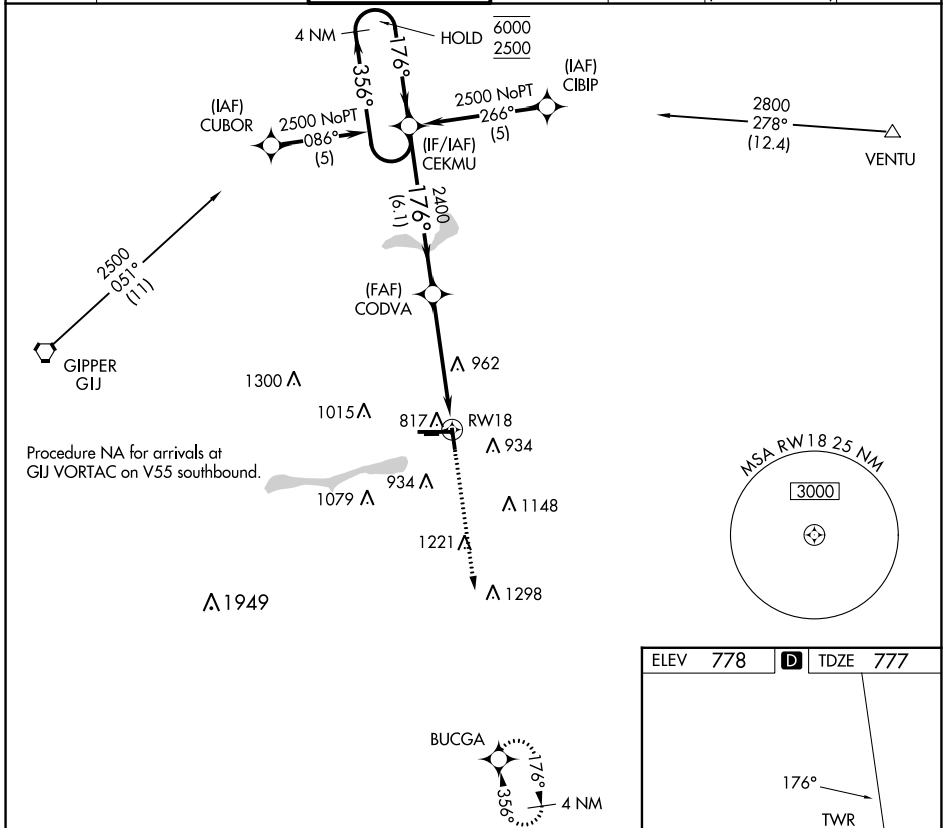
ELKHART MUNI (EKM)

RNP APCH - GPS

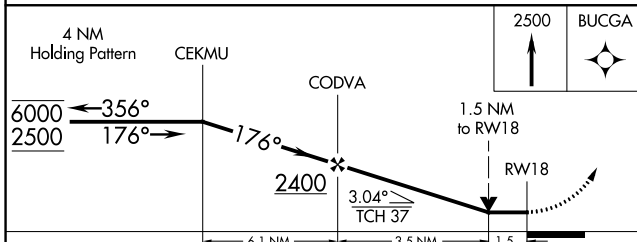
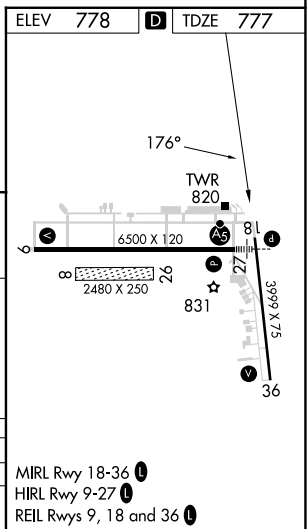
⚠ Circling NA to Rwy 8 and 26. Circling to Rwy 36 NA at night. Rwy 18 helicopter visibility reduction below 3/4 SM NA. VDP NA with South Bend altimeter setting. When local altimeter setting not received, use South Bend altimeter setting and increase all MDAs 40 feet.

MISSED APPROACH: Climb to 2500 direct BUCGA and hold.

AWOS-3	SOUTH BEND APP CON ★	ELKHART TOWER ★	GND CON	CLNC DEL	CLNC DEL	UNICOM
124.475	118.55 257.8	119.5 (CTAF) 0	121.8	121.8	119.7 (When twr closed)	122.95



Procedure NA for arrivals at GIJ VORTAC on V55 southbound.



CATEGORY	A	B	C	D
LNAV MDA	1280-1	503 (600-1)	1280-1 ³ / ₈	503 (600-1 ³ / ₈)
C CIRCLING	1280-1 502 (600-1)	1300-1 522 (600-1)	1380-1 ³ / ₄ 602 (700-1 ³ / ₄)	1580-2 ¹ / ₂ 802 (900-2 ¹ / ₂)

MIRL Rwy 18-36 **⓪**
 HIRL Rwy 9-27 **⓪**
 REIL Rws 9, 18 and 36 **⓪**

EC-2, 28 NOV 2024 to 26 DEC 2024

EC-2, 28 NOV 2024 to 26 DEC 2024