

LOC/DME I-JYO 111.75 Chan 54 (Y)	APP CRS 171°	Rwy Idg TDZE Apt Elev	5500 383 390
--	------------------------	-----------------------------	---

ILS or LOC RWY 17

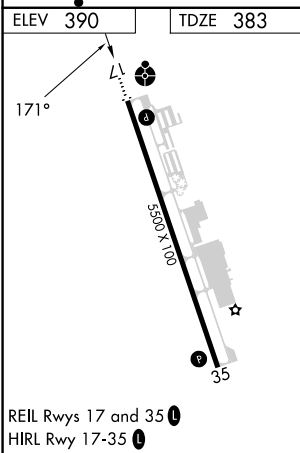
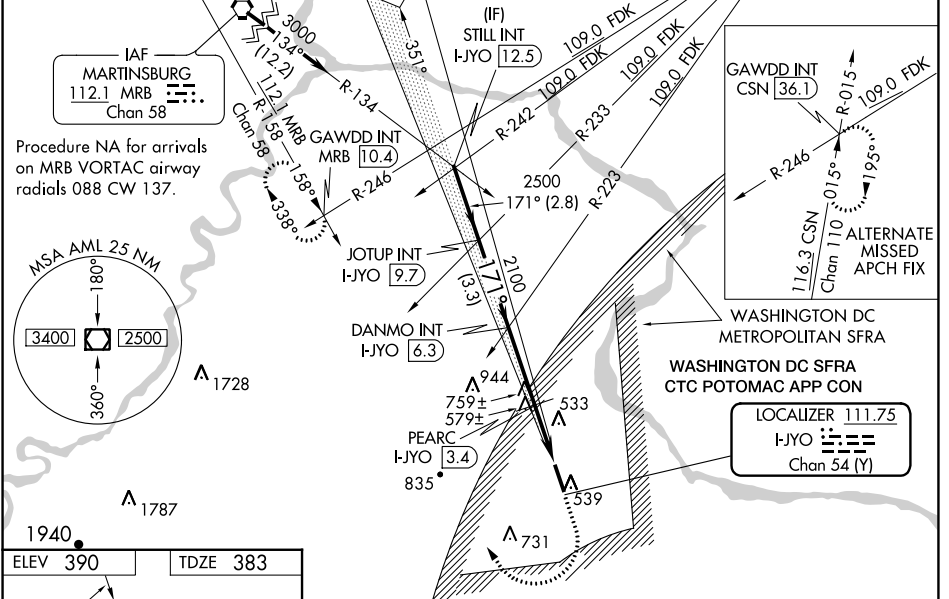
LEESBURG EXEC (JYO)

NA Inop table does not apply to S-ILS 17 all Cats and S-LOC 17 Cats C/D. For inop ALS when using Washington Dulles Intl altimeter setting, increase visibility S-ILS 17 Cats A/B to 3/8 SM and inop table does not apply to S-LOC 17 Cats C/D. When local altimeter setting not received, use Washington Dulles Intl altimeter setting: increase S-ILS 17 DA to 665 feet; increase all MDA 40 feet and visibility S-LOC 17 Cat A and Circling Cat C 1/4 SM and PEARC fix minimums S-LOC 17 Cat C/D 1/2 SM and Circling Cat C 1/4 SM. For inop ALS, increase PEARC fix minimums S-LOC 17 Cats C/D visibility to 1 3/8.

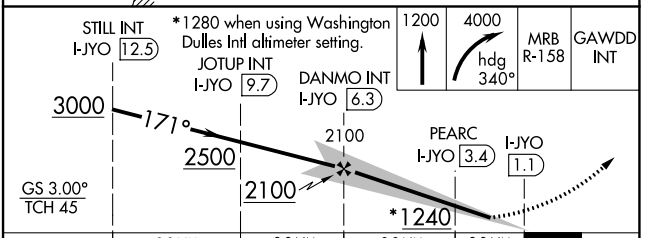
ODALS

MISSED APPROACH: Climb to 1200 then climbing right turn to 4000 on heading 340° and MRB VORTAC R-158 to GAWDD INT/MRB 10.4 DME and hold, continue climb-in hold to 4000.

AWOS-3 125.225	POTOMAC 125.05	APP CON 338.25	LEESBURG TOWER ★ 127.5 (CTAF) 0	GND CON 120.5	CLNC DEL 120.5	CLNC DEL 118.55 (When twr closed)	UNICOM 122.975
--------------------------	--------------------------	--------------------------	--	-------------------------	--------------------------	---	--------------------------



FAF to MAP 5.3 NM					
Knots	60	90	120	150	180
Min:Sec	5:18	3:32	2:39	2:07	1:46



CATEGORY	A	B	C	D
S-ILS 17	633-3/4 250 (300-3/4)			
S-LOC 17	1240-3/4 857 (900-3/4)	1240-1 857 (900-1)	1240-2 1/2	857 (900-2 1/2)
CIRCLING	1240-1 1/4	850 (900-1 1/4)	1240-2 1/2 850 (900-2 1/2)	1300-3 910 (1000-3)
PEARC FIX MINIMUMS				
S-LOC 17	840-3/4	457 (500-3/4)	840-1 1/8	457 (500-1 1/8)
CIRCLING	860-1	470 (500-1)	1040-1 3/4 650 (700-1 3/4)	1300-3 910 (1000-3)

NE-3, 28 NOV 2024 to 26 DEC 2024

NE-3, 28 NOV 2024 to 26 DEC 2024