

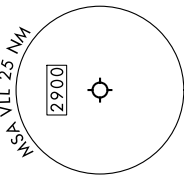
DETROIT DEP CON  
132.35 284.0  
AWOS-3  
119.475  
CTAF  
123.05

**TOP ALTITUDE:  
ASSIGNED BY ATC**

RNAV-1 DME/DME/IRU or GPS.  
RADAR required.



TAKEOFF MINIMUMS:  
Rwy 10: Standard.  
Rwy 28: Standard with minimum climb  
of 476' per NM to 1500.



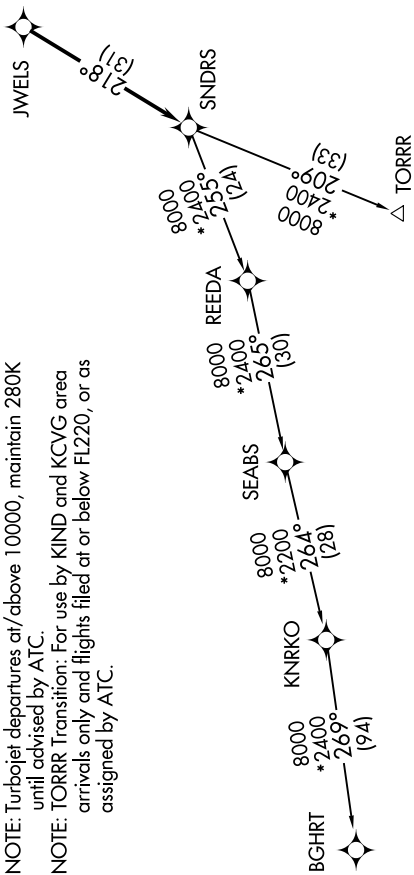
**DEPARTURE ROUTE DESCRIPTION**

TAKEOFF RUNWAY 10: Climb on heading 096° to 1400 then as assigned by ATC, thence....  
TAKEOFF RUNWAY 28: Climb on heading 276° to 1500 then as assigned by ATC, thence....

....for RADAR vectors to JWELS, then on track 218° to SNDRS, then on (transition). Maintain ATC assigned altitude, expect filed altitude 10 minutes after departure.

BGHRT TRANSITION (SNDRS3.BGHRT):  
TORRR TRANSITION (SNDRS3.TORRR):

NOTE: Turbojet departures at/above 10000, maintain 280K until advised by ATC.  
NOTE: TORRR Transition: For use by KIND and KCVG area arrivals only and flights filed at or below FL220, or as assigned by ATC.



NOTE: Chart not to scale.