

SHELBYVILLE, TENNESSEE

AL-5299 (FAA)

23054

VOR/DME SYI 113.55 Chan 82 (Y)	APP CRS 152°	Rwy Idg 5504 TDZE 800 Apt Elev 801
--	------------------------	---

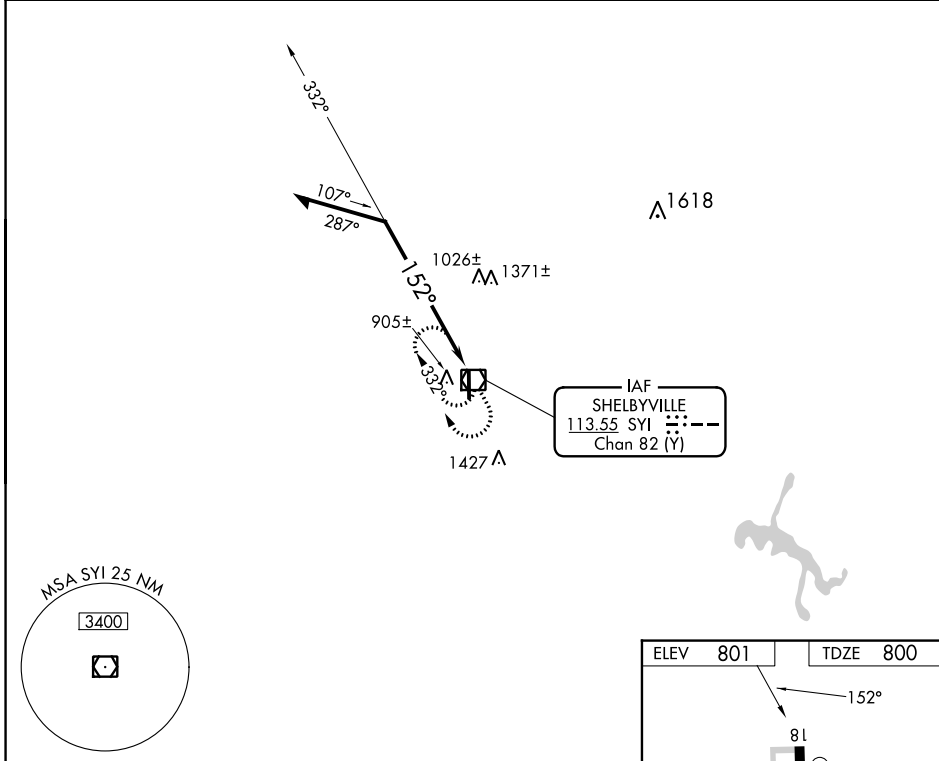
VOR RWY 18

BOMAR FLD/SHELBYVILLE MUNI (SYI)

⚠ When local altimeter setting not received, use Tullahoma altimeter setting and increase all MDAs 80 feet and S-18 visibility Cat B/C/D ½ SM, and Circling visibility Cat B ¼ SM.

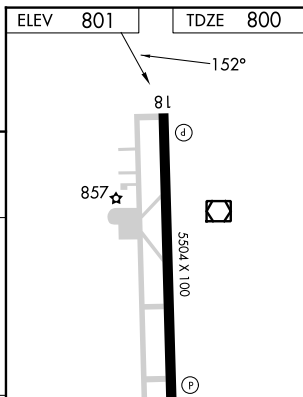
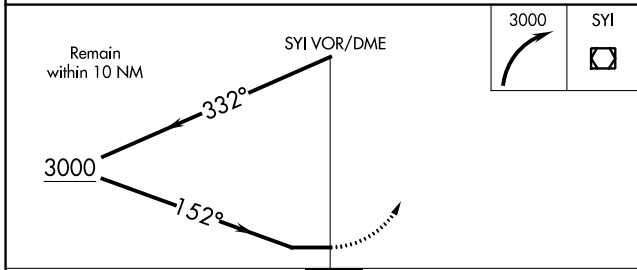
MISSED APPROACH: Climbing right turn to 3000 in SYI VOR/DME holding pattern.

AWOS-3 119.275	MEMPHIS CENTER 128.15 323.125	UNICOM 122.8 (CTAF) 0
--------------------------	---	--



SE-1, 28 NOV 2024 to 26 DEC 2024

SE-1, 28 NOV 2024 to 26 DEC 2024



CATEGORY	A	B	C	D
S-18	1500-1	700 (700-1)	1500-2	700 (700-2)
C CIRCLING	1500-1	699 (700-1)	1780-3	979 (1000-3)

MIRL Rwy 18-36 **0**
REIL Rwy 18 and 36

SHELBYVILLE, TENNESSEE
Amdt 5D 29DEC22

35°34'N-86°27'W

BOMAR FLD/SHELBYVILLE MUNI (SYI) VOR RWY 18