

VOR/DME SYI <b>113.55</b> Chan <b>82</b> (Y)	APP CRS <b>016°</b>	Rwy Idg <b>5504</b> TDZE <b>801</b> Apt Elev <b>801</b>
--	------------------------	---

# VOR RWY 36

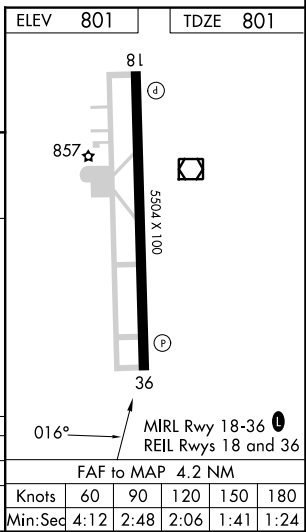
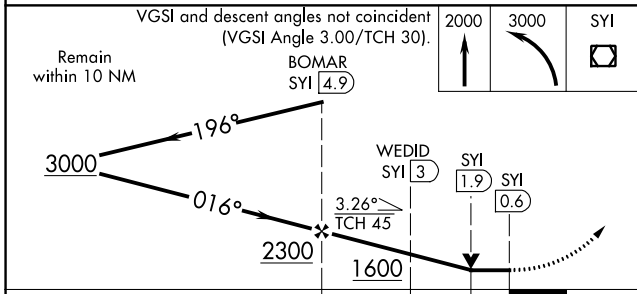
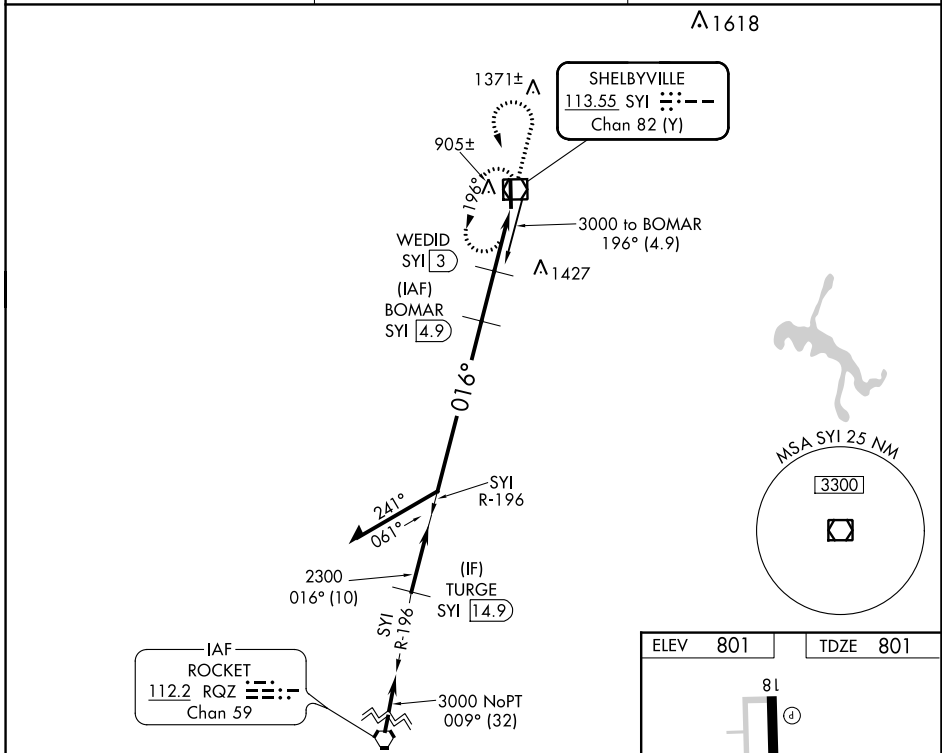
BOMAR FLD/SHELBYVILLE MUNI (SYI)

DME required.

**▼** When local altimeter setting not received, use Tullahoma altimeter setting and increase all MDA's 80 feet, and S-36 Cat C/D visibility ¼ SM.  
**▲** VDP NA when using Tullahoma altimeter setting.

MISSED APPROACH: Climb to 2000 then climbing left turn to 3000 direct SYI VOR/DME and hold.

AWOS-3 <b>119.275</b>	MEMPHIS CENTER <b>128.15 323.125</b>	UNICOM <b>122.8</b> (CTAF) <b>0</b>
--------------------------	---	--



CATEGORY	A	B	C	D
S-36	1220-1	419 (500-1)	1220-1 1/8	419 (500-1 1/8)
<b>C</b> CIRCLING	1260-1 459 (500-1)	1420-1 619 (700-1)	1780-3	979 (1000-3)

SE-1, 28 NOV 2024 to 26 DEC 2024

SE-1, 28 NOV 2024 to 26 DEC 2024